



Brick Street, W1J

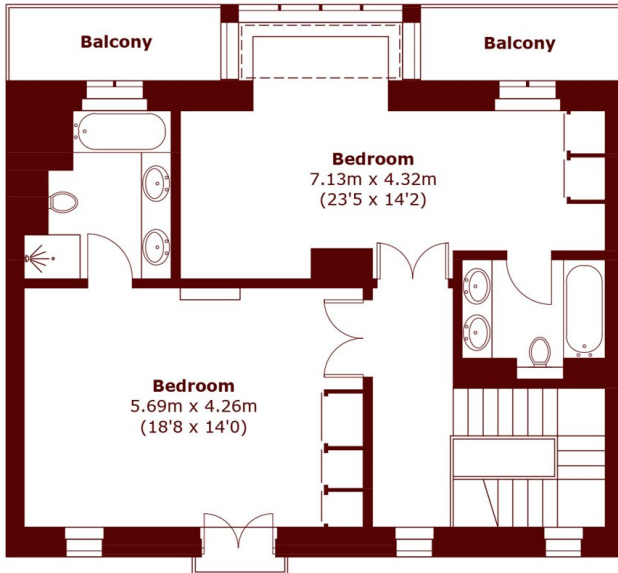
£3,461 per week (£15,166 pcm)

 5  4  2  D

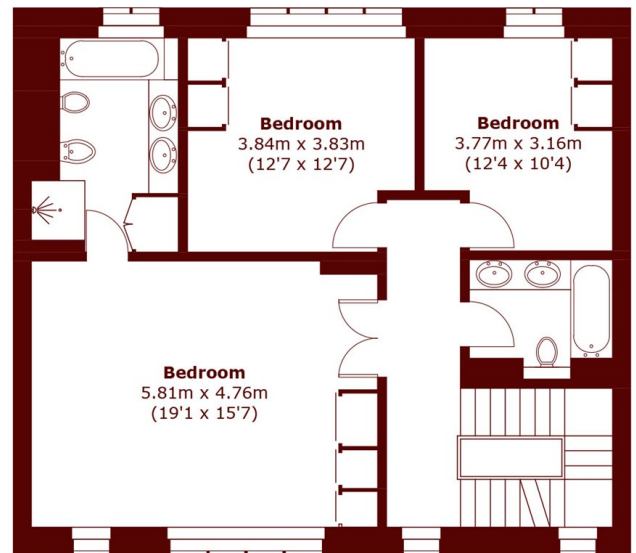
- Five Bedrooms
- Four Bathrooms

- Two Reception Rooms
- Residents Off Street Parking

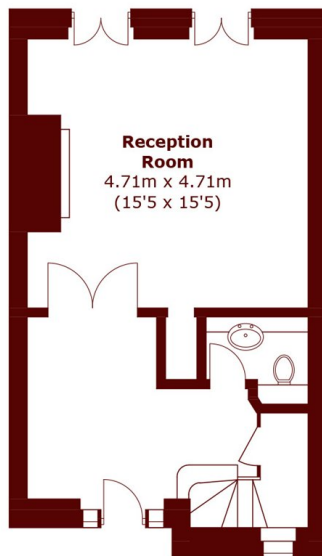
- In The Heart Of Mayfair
- Off Street Parking Space



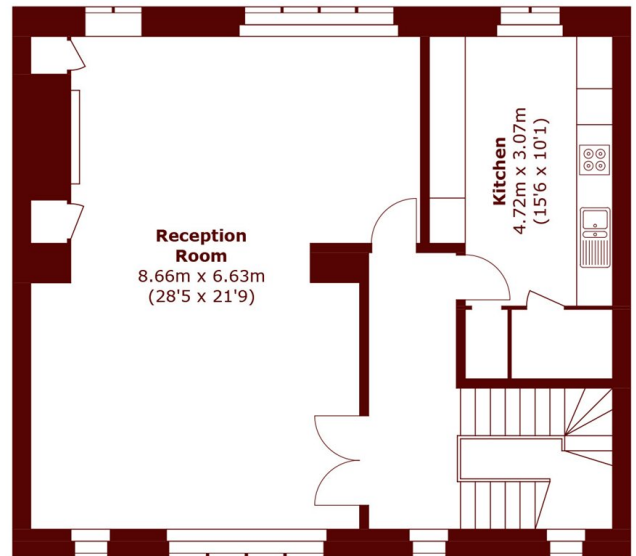
Third Floor



Second Floor



Ground Floor



First Floor

Total area (approx.): 276.6 sq. m (2977.4 sq. ft)
Balcony : 8.5 sq. m (91.5 sq. ft)

Marsh & Parsons Marylebone & Mayfair

94 Baker Street, London,
W1U 6FZ
020 7935 1775