



Guide Price
£325,000

Freehold

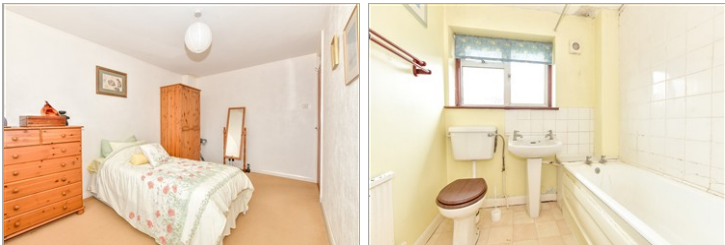
3x  1x  1x 

**Luard Court,
Warblington, Havant,
Hampshire, PO9**

OVER 60?

Secure this property
for up to **59% less!**

cubitt&west
Helping you move forwards



Main features

- Situated in a quiet cul-de-sac location
- In need of some modernisation of the decor
- Light and spacious lounge
- Secure private rear garden
- Offered with no forward chain

Accommodation

GROUND FLOOR

Hallway

Lounge: 18'4 x 12'0 (5.59m x 3.66m)

Kitchen: 12'9 x 7'9 (3.89m x 2.36m)

FIRST FLOOR

Landing

Bedroom 1: 14'6 x 12'0 (4.42m x 3.66m)

Bedroom 2: 11'8 x 8'5 (3.56m x 2.57m)

Bedroom 3: 11'5 x 8'3 (3.48m x 2.52m)

Bathroom

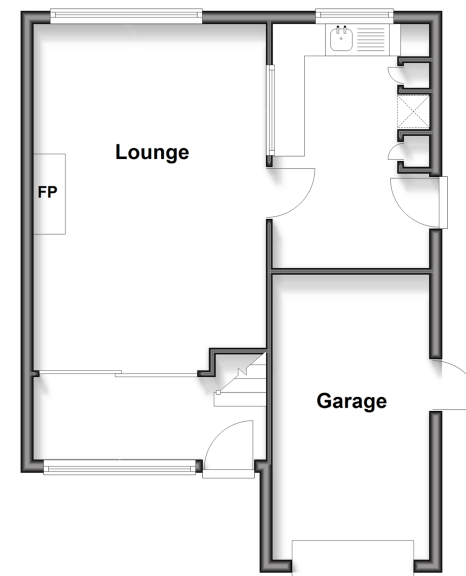
OUTSIDE

Front and Rear Garden

Garage and Off Road Parking

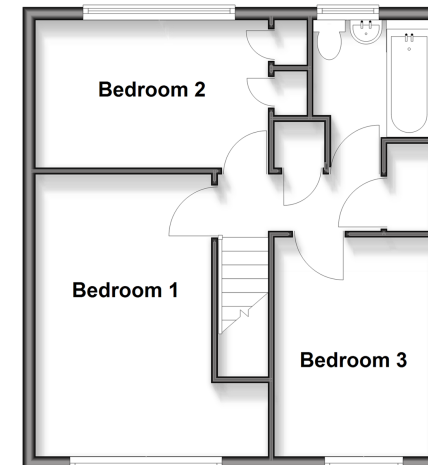
Ground Floor

Approx. 46.0 sq. metres (494.7 sq. feet)



First Floor

Approx. 42.1 sq. metres (453.5 sq. feet)



Call Havant - 023 92492708 ■ cubittandwest.co.uk

- Legal advice should be taken to verify fixtures/fittings, planning, alterations and/or lease details
- Appliances & services are untested, dimensions are approximate and floor plans are not to scale
- Through a Homewise Home For Life Plan people aged 60+ can secure this property for up to 50% less, by purchasing a Lifetime Lease.



41129730/20251104/DG1/KC