



Radnor Terrace, W14

£1,095 Per week

This two bedroom property on the ground floor of this new development offers wood flooring, air conditioning, private patio and concierge. Combine this with 24 hour porterage, access to a variety of facilities and lift access this property is ideal for a single professional or family.

Located on Kensington High Street within easy walking distance of all the amenities it has to offer. This development features 24 hour concierge service, a private cinema room, swimming pool, gym and spa. Holland Park and Hyde Park are close by.

Features

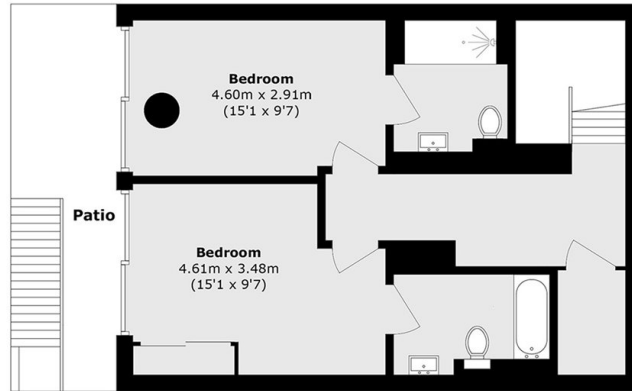
- Two Bedroom
- Two Bathroom
- Private Patio
- Private Parking
- Air Conditioning
- 24 Hour Concierge



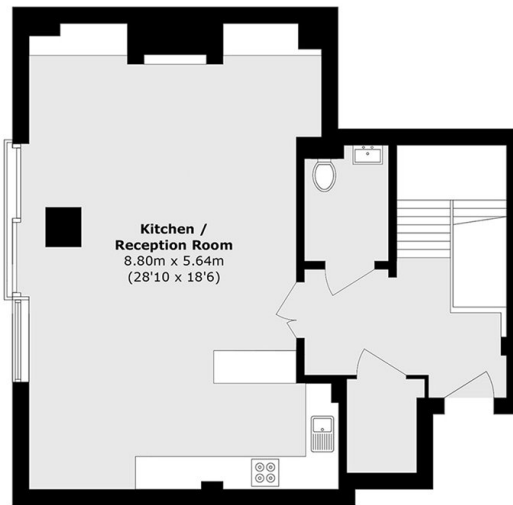
Radnor Terrace, W14



Radnor Terrace, London, W14



Lower Ground Floor



Ground Floor

Total area (approx.): 123.9 sq. m (1333.7 sq. ft)