



St. James Road, Brentwood, CM14 4EL
£320,000

Jenkins
Property

T: 01277228620

E: SALES@JENKINS-PROPERTY.COM

WWW.JENKINS-PROPERTY.COM

This spacious third floor two bedroom purpose-built apartment is set in a convenient position close to Brentwood mainline station. Ideal for commuting into London Liverpool Street and capitalising on the future cross rail links. The recently decorated and carpeted for interior benefits from a large open kitchen living space complimented by two large double bedrooms and bathroom. The property boasts private allocated parking and balcony. A good investment or first-time purchase. No onward chain.

- Recently decorated
- New carpets
- Open Plan kitchen and living space
- Close proximity to Brentwood mainline station
- Private allocated parking
- Two double bedrooms
- Balcony
- Third floor
- No onward chain
- Good investment or rental property

Communal Entrance with video entry phone

Reception hallway

Large storage cupboard

Open plan kitchen living area 25' max x 14' max (7.62m max x 4.27m max)

Balcony 8' x 4' (2.44m x 1.22m)

Master bedroom 13'6" x 9'6" (4.11m x 2.90m)

Second bedroom 13'6" x 7'6" (4.11m x 2.29m)

Bathroom 7'4" x 5'8" (2.24m x 1.73m)

Private allocated parking



Brunel House

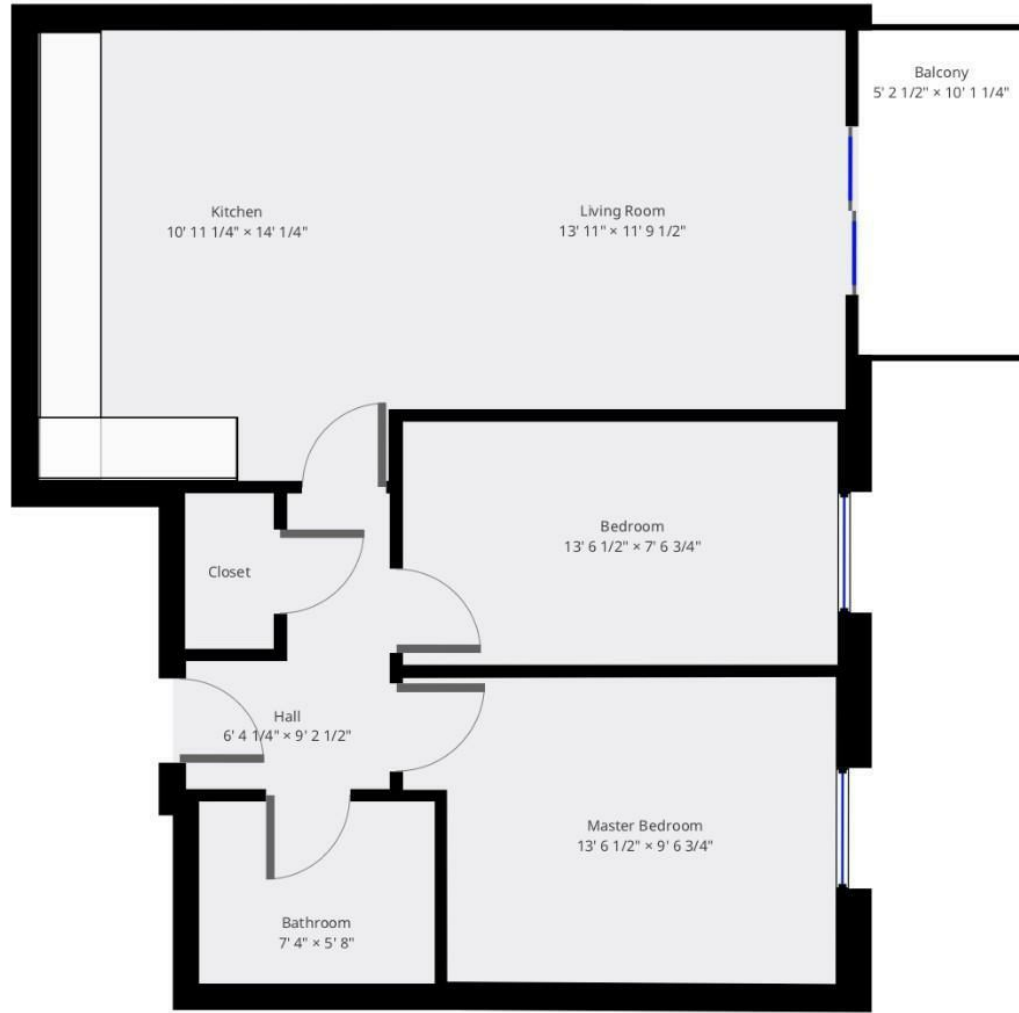


Jenkins Property
 sales@jenkins-property.com
 01277 228620

Statistics

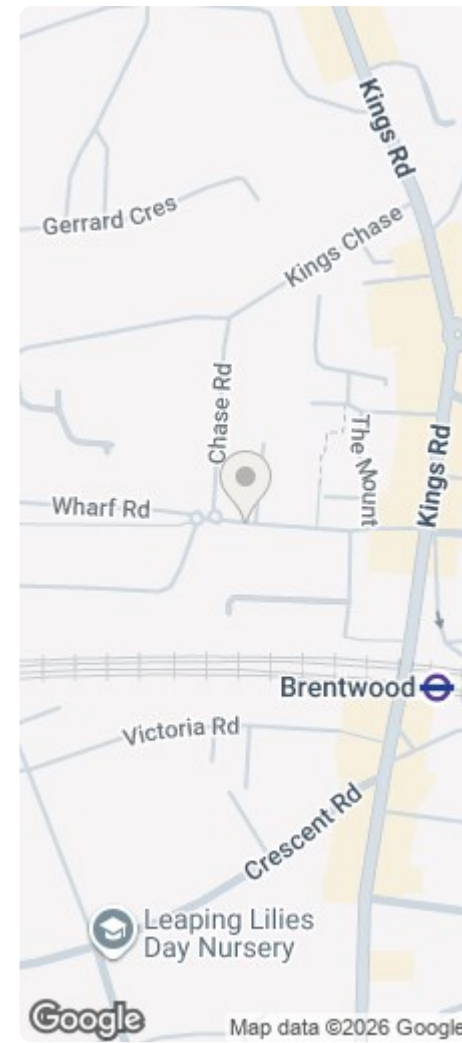
Area: 636 sq ft

3rd Floor



1

THIS FLOORPLAN IS PROVIDED WITHOUT WARRANTY OF ANY KIND. SENSOFIA DISCLAIMS ANY WARRANTY INCLUDING, WITHOUT LIMITATION, SATISFACTORY QUALITY OR ACCURACY OF DIMENSIONS.



Energy Efficiency Rating		Environmental Impact (CO ₂) Rating	
Current	Target	Current	Target
Very energy efficient - lower running costs		Very environmentally friendly - lower CO ₂ emissions	
A		A	
B		B	
C		C	
D		D	
E		E	
F		F	
G		G	
Not energy efficient - higher running costs		Not environmentally friendly - higher CO ₂ emissions	

England & Wales EU Directive 2002/91/EC

