



wnproperties.co.uk

Chelmsford Road, Shenfield

WN
PROPERTIES

Chelmsford Road Shenfield

£2,850.00 pcm

Extended and improved by the owners during their time in the property, this eclectic, bay fronted three bedroom semi-detached home is offered for rent on an unfurnished basis. Mixing period features with modern additions the accommodation includes bay fronted living room, spacious multifunction reception room area, open plan to a modern kitchen, utility room, ground floor shower/guest WC and family bathroom to the first floor. There is a secure storage room to the side and the property further benefits from a long rear garden backing farmland. A block paved driveway provides off street parking and the property warrants an internal inspection to appreciate the many features on offer. Available from the end of May 2026. EPC C.



Entrance hallway with access to first floor

Ground floor guest WC/Shower Room

Living Room 13' 5" max into bay > 11' 04" x 13' 5"
(4.09m > 3.46m x 4.09m)

Kitchen/Diner/Reception with view over and
access to rear garden 24' 6" max > 19' 00" x 23'
6" max > 11' 11" (7.46m > 5.81m x 7.16m > 3.62m)

Utility Room 9' 3" x 4' 3" (2.82m x 1.29m)

Landing with built-in storage cupboard

Bedroom One 13' 5" max into bay > 11' 05" x 13'
5" (4.09m > 3.46m x 4.09m)

Bedroom Two 11' 11" max > 10' x 9' 5" (3.63m >
3.04m x 2.87m)

Bedroom Three 11' 10" x 10' 1" (3.60m x 3.07m)

Family Bathroom

Exterior - extensive rear garden with off street
parking to front

Storage garage with electric roller shutter door



A one week holding deposit is required to secure this property. Please ask for a copy of our 'Guide for Tenants' for a full list of costs applicable to this or any of our properties. Please note your holding deposit is at risk if you withdraw from the transaction or do not disclose something that may affect your ability to pass references.





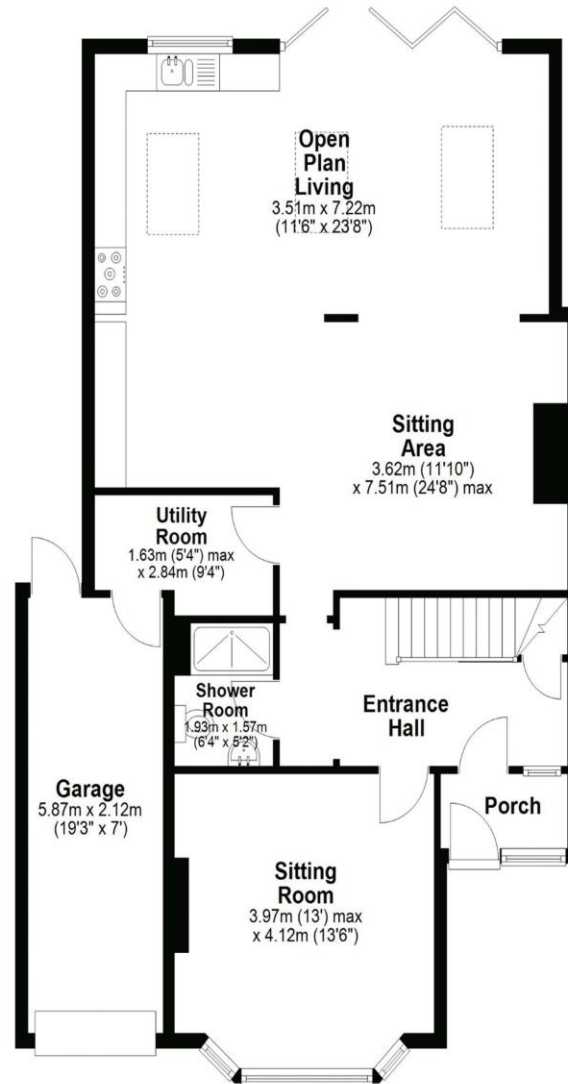
| Score | Energy rating | Current | Potential |
|-------|---------------|---------|-----------|
| 92+ | A | | |
| 81-91 | B | | |
| 69-80 | C | 69 C | 80 C |
| 55-68 | D | | |
| 39-54 | E | | |
| 21-38 | F | | |
| 1-20 | G | | |

148 Hutton Road, Shenfield
Brentwood
Essex CM15 8NL

01277 225191
lettings@wnproperties.co.uk
wnproperties.co.uk

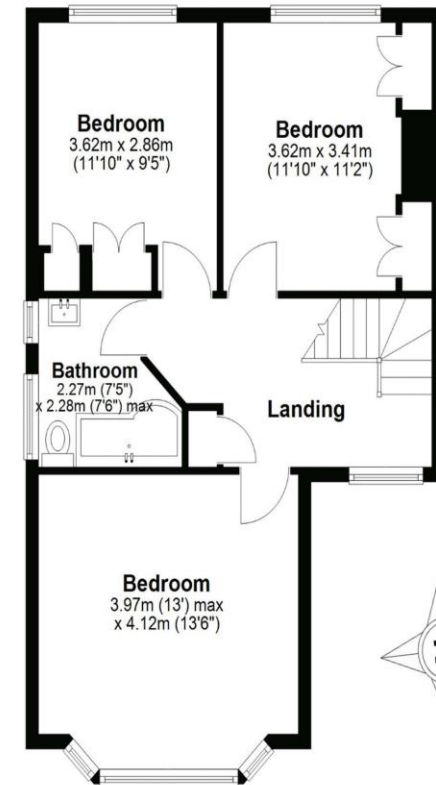


Ground Floor



APPROX INTERNAL FLOOR AREA 154 SQ M (1660 SQ FT)
This floorplan is for illustrative purposes only and is **NOT TO SCALE**
All measurements are approximate **NOT** to be used for valuation purposes
Copyright Wilson Nicol 2025

First Floor



Every effort has been made to ensure the accuracy of these particulars that have been prepared in good faith in conjunction with the vendor and they cannot be guaranteed and should not form part of any offer or contract. We have not checked the existence of relevant permissions, legal ownership, fixtures, fittings and appliances are in working order or fit for purpose. Photographs are for general information and it cannot be inferred that any items shown are included in the sale or within the ownership of the seller and therefore must be verified by your legal representative. No assumptions can be made from any description or image, relating to the type of construction or structural condition. All measurements are approximate, and any drawings or floorplans provided are for general guidance and are not to scale. Consumer Protection from Unfair Trading Regulations 2008 and the Business Protection from Misleading Marketing Regulations 2008.