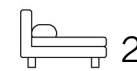




Living  
made  
better

Warehouse W  
Royal Victoria Dock, E16 1BD



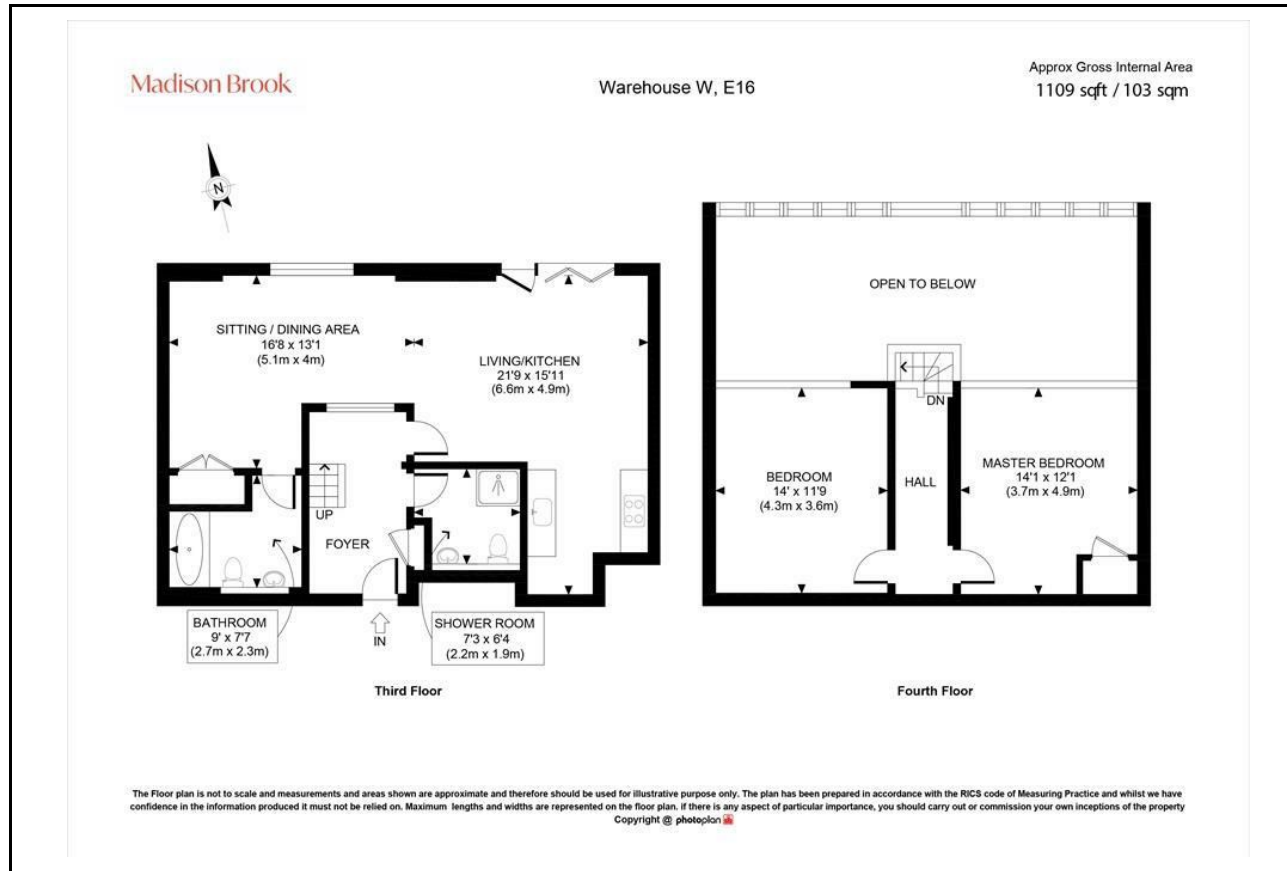
£2,650 PCM

# Warehouse W, Royal Victoria Dock, E16 1BD

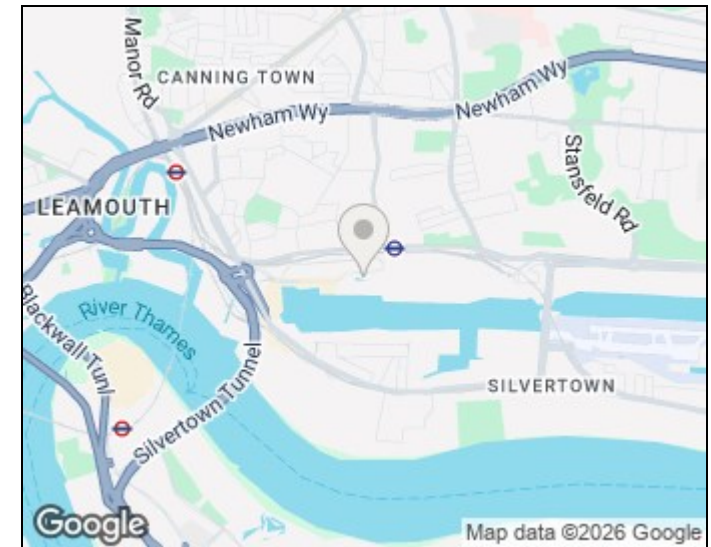
## Property Summary

This impressive two bedroom, two bathroom apartment is ideally located in a converted warehouse and offers stylish living space. Set on the third floor, the property comprises spacious reception room with double height ceiling and a stunning Juliette balcony, open-plan kitchen, sizeable master bedroom, luxury bathroom, separate shower room, mezzanine level offers two good sized bedrooms. Warehouse W is perfectly placed for use of the many local amenities. Local transport links include Custom House Station (DLR & Elizabeth Line) and a selection of useful A roads for access into the City and Canary Wharf.

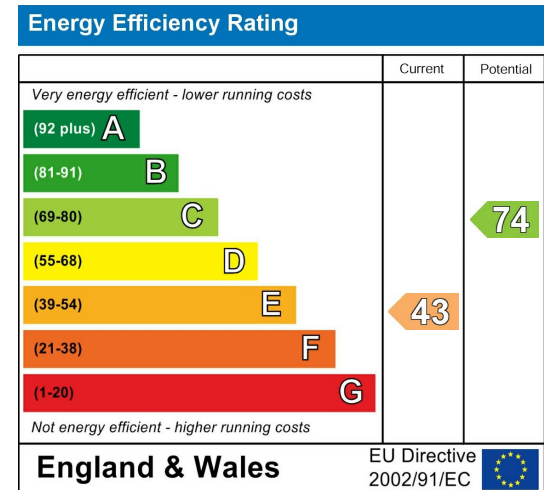
## Floorplan



## Area Map



## Energy Efficiency Graph



These particulars, whilst believed to be accurate are set out as a general outline only for guidance and do not constitute any part of an offer or contract. Intending purchasers should not rely on them as statements of representation of fact, but must satisfy themselves by inspection or otherwise as to their accuracy. No person in this firm's employment has the authority to make or give any representation or warranty in respect of the property.

Unit B 20 Western Gateway, Royal Victoria Dock, London, E16 1BS  
 Tel: 020 3946 6000 Email: docklands@madisonbrook.com  
<https://madisonbrook.com/>