



## Darwin House Holmesley Road

, Borehamwood, WD6 1AP

### Offers in excess of £350,000

Nestled on the desirable Holmesley Road in Borehamwood, this modern flat offers a perfect blend of comfort and contemporary living. Built in 2019, this new build property spans an impressive 667 square feet, providing ample space for both relaxation and entertaining.

The flat features a welcoming reception room, ideal for hosting guests or enjoying quiet evenings at home. With two well-appointed bedrooms, this residence is perfect for small families, couples, or individuals seeking extra space. The property boasts two bathrooms, ensuring convenience and privacy for all occupants.

One of the standout features of this flat is the dedicated parking space for one vehicle, a valuable asset in this bustling area. The location itself is highly sought after, with easy access to local amenities, transport links, and green spaces, making it an excellent choice for those looking to enjoy the vibrant community of Borehamwood.

This property is not just a home; it is a lifestyle choice, offering modern living in a prime location. Whether you are a first-time buyer or looking to downsize, this flat presents a wonderful opportunity to own a piece of contemporary elegance in a thriving neighbourhood. Do not miss the chance to make this delightful flat your new home.

- 2 Bedrooms
- 2 Bathrooms
- Parking
- Close to Station

### Viewing

Please contact us on 020 3198 4517 if you wish to arrange a viewing appointment for this property or require further information.

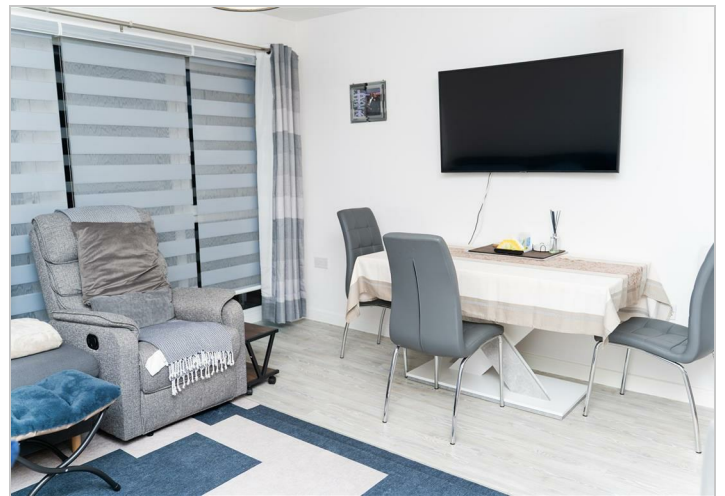
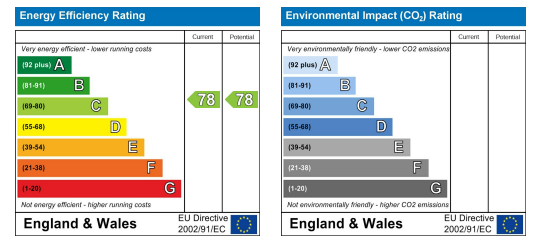


## Floor Plan

## Area Map



## Energy Efficiency Graph



These particulars, whilst believed to be accurate are set out as a general outline only for guidance and do not constitute any part of an offer or contract. Intending purchasers should not rely on them as statements of representation of fact, but must satisfy themselves by inspection or otherwise as to their accuracy. No person in this firm's employment has the authority to make or give any representation or warranty in respect of the property.