

**TO LET**



**Hulse Road, Banister park**

**2 Bedrooms, 1 Bathroom, First Floor Apartment**

**£1,150 pcm**

  
**MARTIN&CO**



## Hulse Road, Banister park

First Floor Apartment,  
2 bedroom, 1 bathroom

£1,150 pcm

Date available: 10th April 2026

Deposit: £1,326.92

Unfurnished

Council Tax band: B

- Available 10th April 2026
- EPC Rate B C.Tax Soton Band B
- Gas Central Heating
- Balcony
- Lift Access
- Security Entry System
- Off Road Parking

**OVERVIEW** A modern first floor two bedroom apartment located in Banister Park.

Comprising of entrance hallway, kitchen, lounge/diner, 2 bedrooms & bathroom, the property also benefits from off road parking, lift access, security entry system, balcony, gas central heating and communal bike storage.

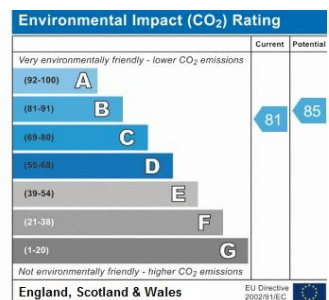
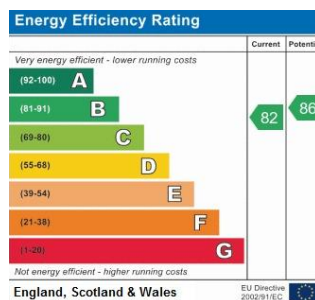
**ENTRANCE HALLWAY**

**KITCHEN** 7' 4" x 7' 7" (2.24m x 2.31m)

**LOUNGE/DINER** 11' 2" x 13' 4" (3.4m x 4.06m)

**BEDROOM 2** 7' 7" x 10' 3" (2.31m x 3.12m)

**BEDROOM 1** 9' 5" x 12' 9" (2.87m x 3.89m)



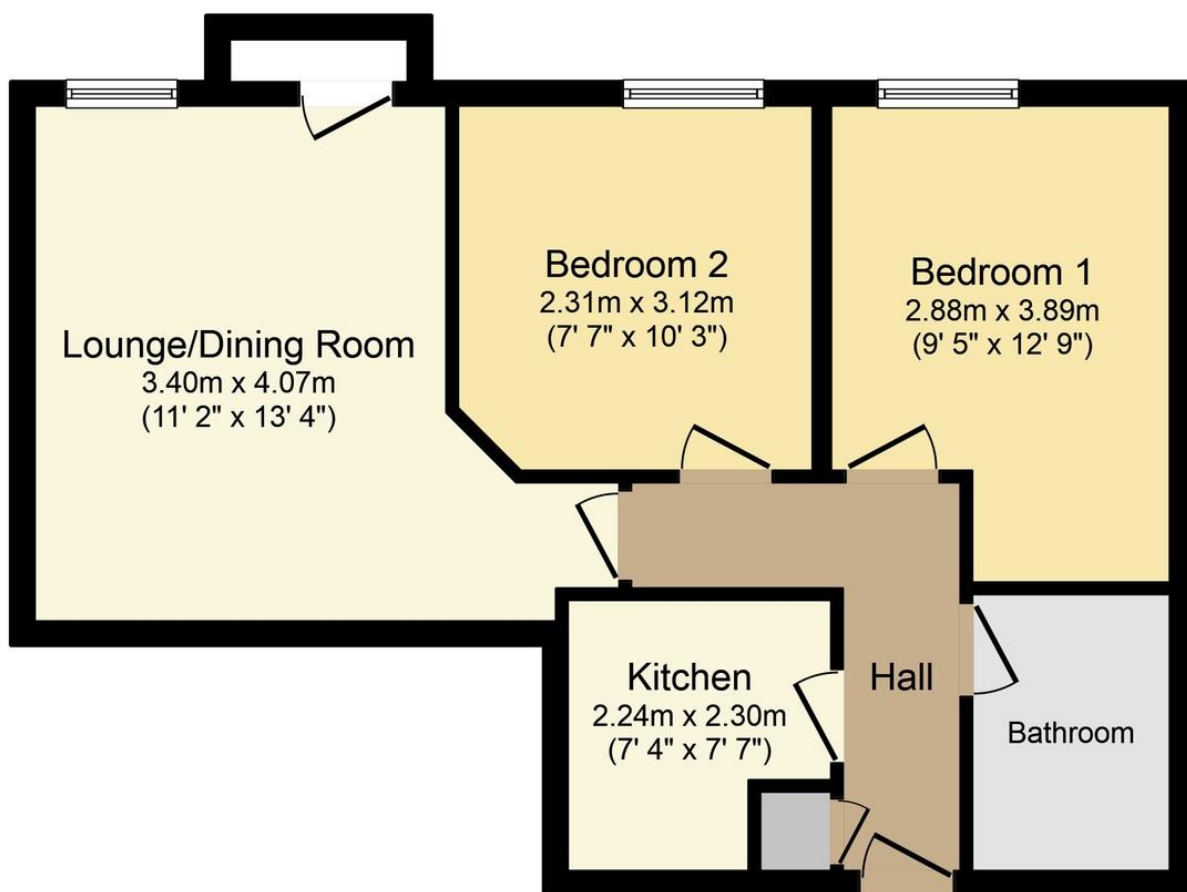


BATHROOM

EPC Rating B

Council Tax Band Southampton City B





**Floor Plan**

Total floor area 53.0 sq. m. (570 sq. ft.) approx

This plan is for illustration purposes only and may not be representative of the property.  
Plan created for Martin & Co.

Produced by [www.keyagent.co.uk](http://www.keyagent.co.uk)

**Martin & Co Southampton City** **02380 988881**  
 46 London Road • Southampton • SO15 2AH  
 T: 02380 988881 • E: [southamptoncity@martinco.com](mailto:southamptoncity@martinco.com) <http://www.martinco.com>



**Accuracy:** References to the Tenure of a Property are based on information supplied by the Seller. The Agent has not had sight of the title documents. A Buyer is advised to obtain verification from their Solicitor. Items shown in photographs including but not limited to carpets, fixtures and fittings are not included unless specifically mentioned within the sales particulars. They may however be available by separate negotiation. Buyers must check the availability of any property and make an appointment to view before embarking on any journey to see a property. No person in the employment of the agent has any authority to make any representation about the property, and accordingly any information given is entirely without responsibility on the part of the agents, sellers(s) or lessors(s). Any property particulars are not an offer or contract, nor for part of one. **Sonic / Laser Tape:** Measurements taken using a sonic / laser tape measure may be subject to a small margin of error. **All Measurements:** All Measurements are Approximate. **Services Not tested:** The Agent has not tested any apparatus, equipment, fixtures and fittings or services and so cannot verify that they are in working order or fit for the purpose. A Buyer is advised to obtain verification from their Solicitor or Surveyor.

