



SYMON SMITH

RESIDENTIAL & COMMERCIAL ESTATE AGENTS
AND PROPERTY MANAGEMENT

240 Stamford Hill, London, N16 6TT

Sales: 020 8802 0025
sales@symonsmith.co.uk
Management: 020 8802 0022
management@symonsmith.co.uk



Kilpatrick Court Darenth Road, London, N16, N16 6EE

Asking Price £575,754

Offered to market and set on the second floor of a well maintained low rise block, this spacious purpose built, THREE bedroom flat is perfect for the first time buyer market. or a great investment.

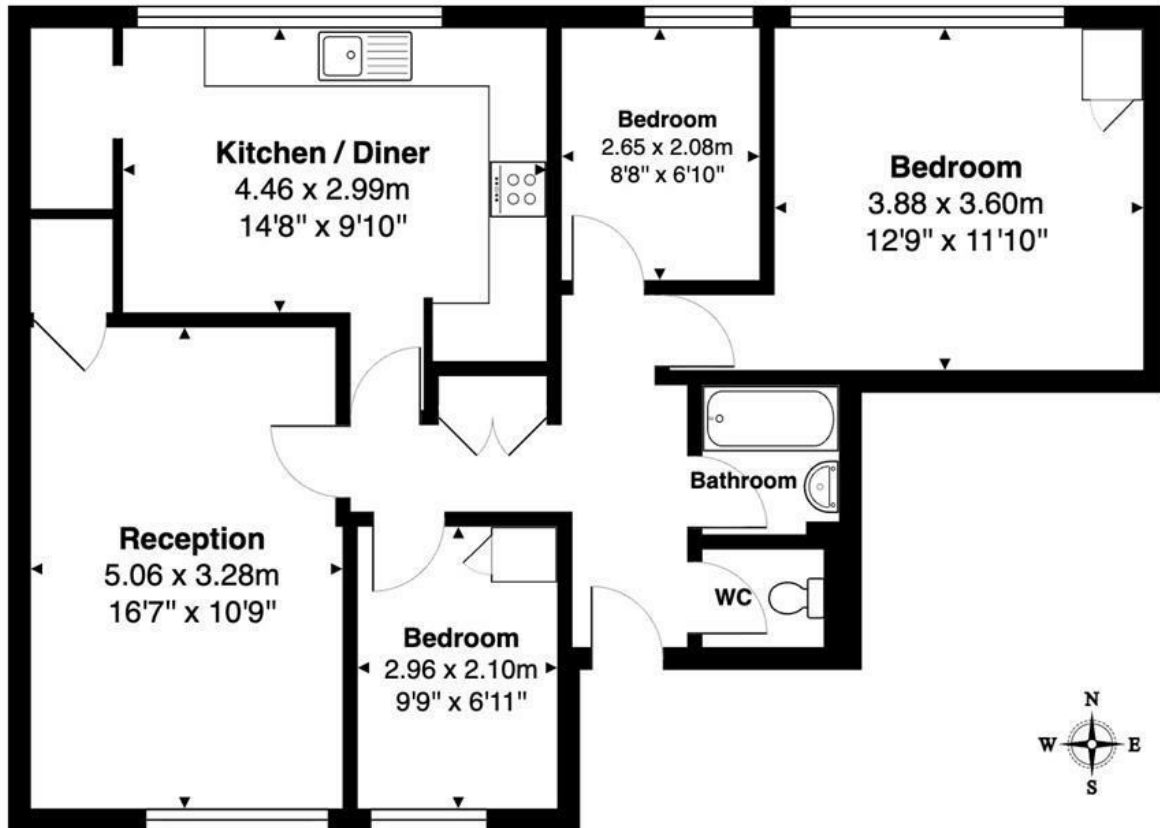
Available to view by appointment only, the property comprises, reception room, separate kitchen, bathroom with separate wc, and ample storage throughout.

Darenth Road, Estate is situated on Stamford Hill, located moments from the local shops, Stoke Newington Church Street & High Street as well as only being a short walk from Clissold Park, Springfield Park and Abney Park.

Transport links include, Stoke Newington Station (Overground), Stamford Hill Station (Overground), Manor House Station (Piccadilly Line), Finsbury Park Station (Piccadilly & Victoria Lines and National Rail) and a wide variety of Bus routes into The City & West End.

- Leasehold
- Three Bedroom
- Kitchen/Breakfast Room
- Lounge
- Bathroom - Seperate - wc
- 2nd Floor Flat
- EPC Rating - D
- Council Tax Band - B

Kilpatrick Court, Darenth Road, London, N16 6EE



Second Floor

Total Area: 76.3 m² ... 821 ft²

All measurements are approximate and for display purposes only.



WWW.SYMONSMITH.CO.UK

Symon Smith Ltd, registered in England 110 Lancaster Road, New Barnet, Herts EN4 8AL No. 3600107 VAT No. 247 764 331