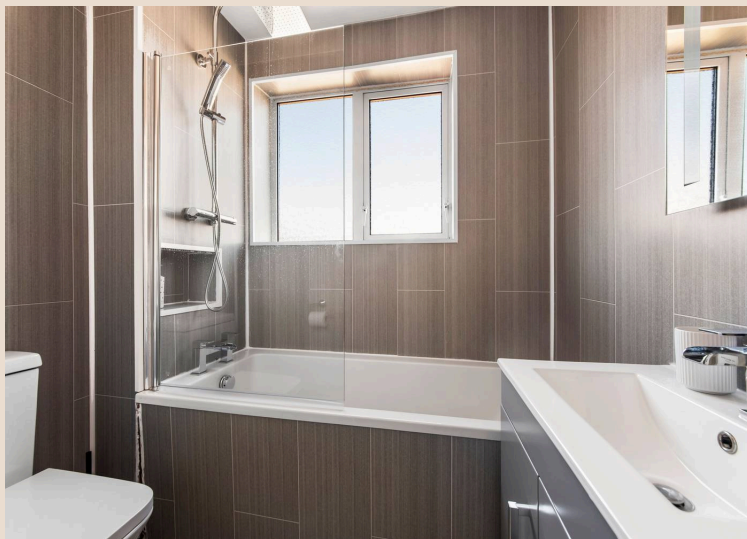




10 Hammerton Way, Wellesbourne

£350,000 Freehold

Well-presented three-bed detached home in Wellesbourne with modern kitchen, open-plan living, utility, upgraded bathroom, garage, parking, garden, and easy access to local amenities and countryside.



The property sits within the thriving village of Wellesbourne, which is highly regarded for its excellent local amenities, welcoming community and convenient location. The village offers a range of everyday facilities including independent shops, cafés, pubs, a medical centre and a well-known weekly market at Wellesbourne Market. It also lies within easy reach of Stratford-upon-Avon, famed for its historic charm, theatres and riverside setting, while the surrounding Warwickshire countryside provides beautiful rural walks and access toward the Cotswolds. Combining modern updates with a practical layout and an excellent village setting, this property would make an ideal home for families, first-time buyers or those looking to settle within a well-connected Warwickshire community.

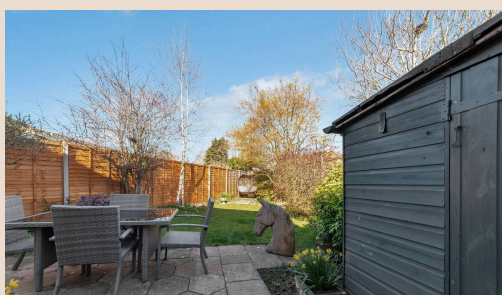
Council Tax band: D

Tenure: Freehold

EPC Energy Efficiency Rating: D



- Three bedrooms
- Detached home
- Generous off-road parking
- Modern kitchen with utility area
- Popular residential location
- Open plan reception room with sliding doors into garden
- Garage
- Recently improved windows & porch





Hammerton Way

Approximate Gross Internal Area = 90.7 sq m / 976 sq ft
(Including Garage)

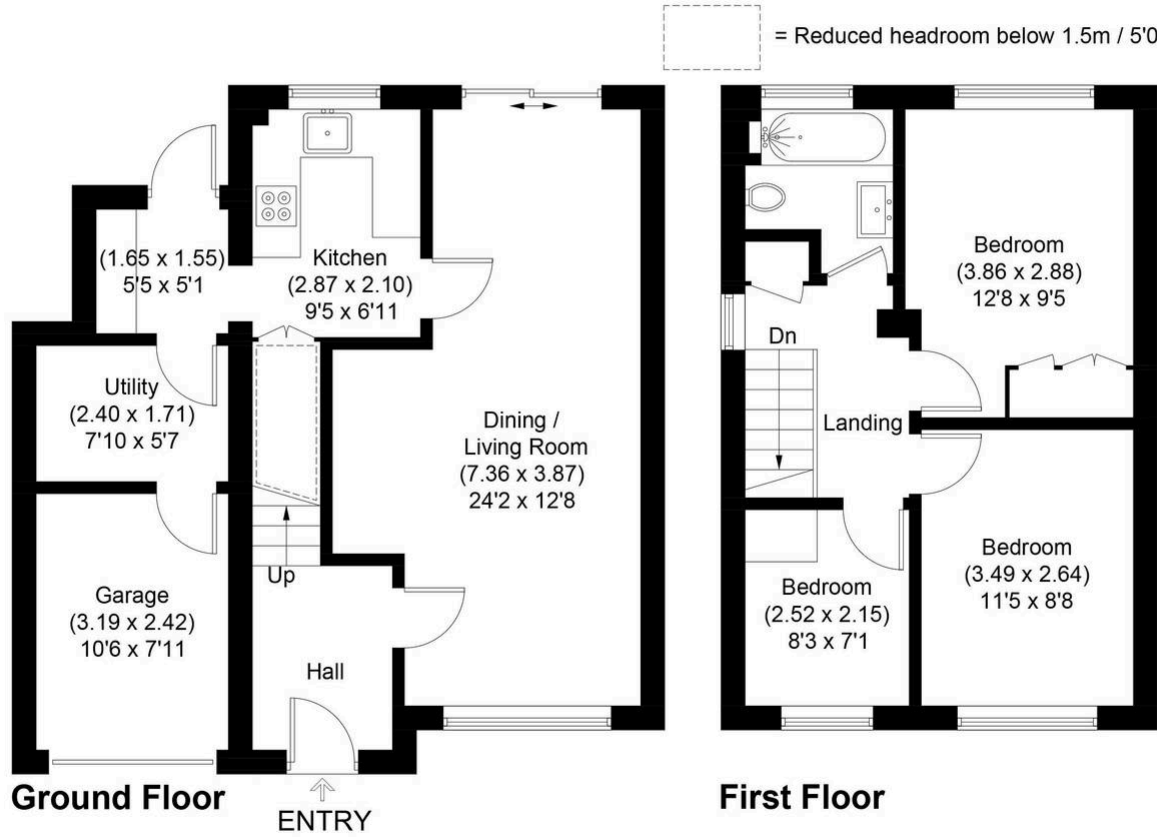


Illustration for identification purposes only, measurements are approximate, not to scale.