



12 Heath Road, Christchurch BH23 5RH

£365,000

Mitchells

1963 — TODAY



Heath Road, Christchurch

A very smart, older style house of about 920sqft with lovely open plan living space, a sunny rear garden and quality garden studio/chalet. Tucked away in a quiet location and within the catchment area of both Highcliffe Primary and Comprehensive schools. No forward chain.



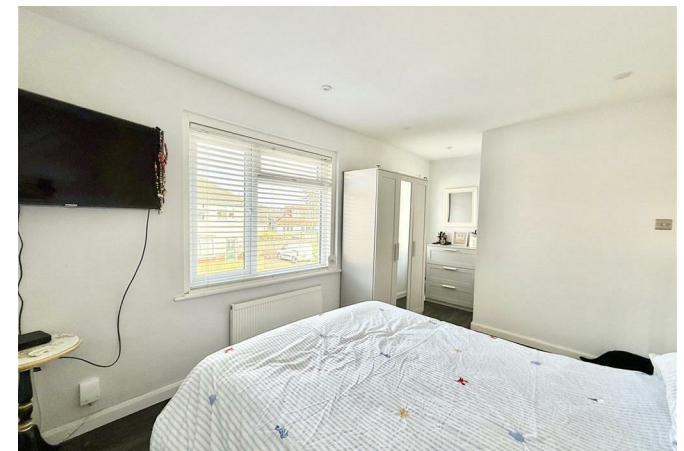
The Property

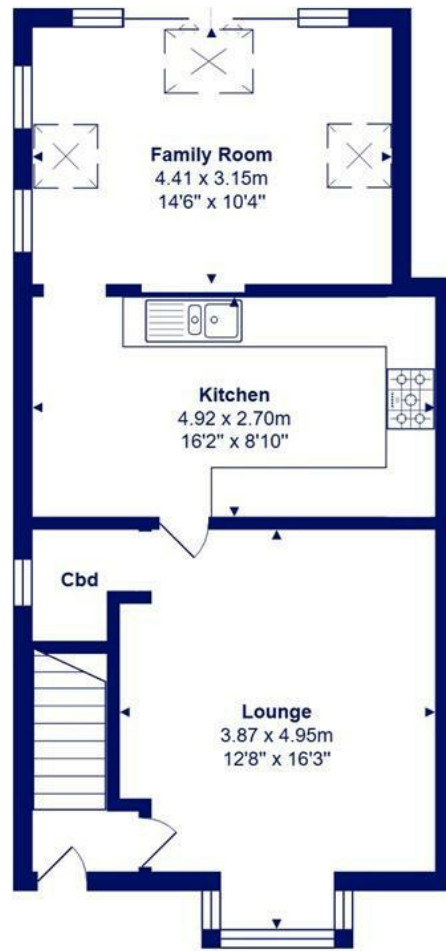
- Older style semi-detached house of about 920sqft
- Thoroughly modernised with quality fittings
- Stylish fitted kitchen with some integrated appliances
- Delightful sitting room and separate orangery/garden room with access to the patio
- Two double bedrooms and family bathroom
- Gas fired heating and UPVC double glazed windows
- Quality garden studio/cabin- insulated, heated and with power
- On road parking, private and sunny rear garden
- Council Tax



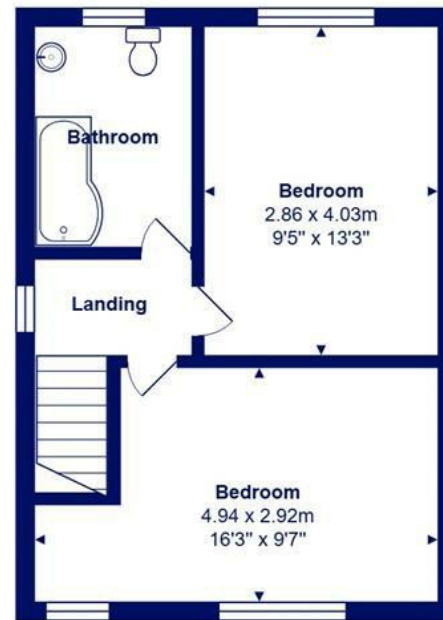


Location





Ground Floor



First Floor



Total Area: 85.3 m² ... 918 ft²

All measurements are approximate and for display purposes only







www.mitchells.uk.com
Highcliffe@mitchells.uk.com
01425 272206

Highcliffe
284 Lymington Road
Highcliffe
Christchurch
BH23 5ET

