



Crowder Street, E1

£325,000

This well-presented south facing third floor apartment is set within a modern development and offers a bright open-plan living and kitchen area, complete with a fitted kitchen and integrated appliances. Further benefits include secure entry, well-maintained communal areas, and a convenient location close to local amenities and excellent transport links.

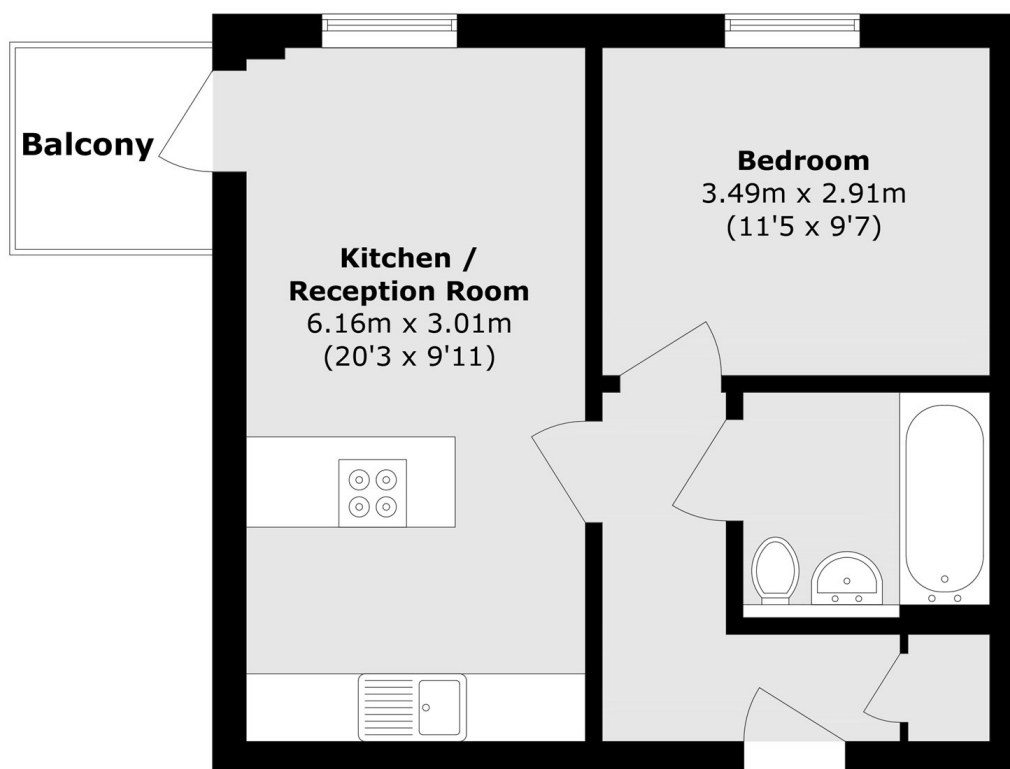
Representing outstanding value, the property is well suited to professionals with regular office commitments or investors seeking a buy-to-let opportunity.

Orchid Apartments is conveniently located just 0.4 miles from Shadwell Overground and DLR stations. Wapping Station and Tower Hill Station are also within easy reach, approximately 0.8 miles away. The City is just a short walk from the development as well as Canary Wharf.

Features

- Modern Throughout
- South Facing Private Balcony
- Short Walk To The City
- Secure Entry System
- Open Planned Reception
- Integrated Appliances

Crowder Street, London, E1



Total area (approx.): 40.6 sq. m (437.0 sq. ft)
Balcony area (approx.): 3.1 sq. m (33.3 sq. ft)