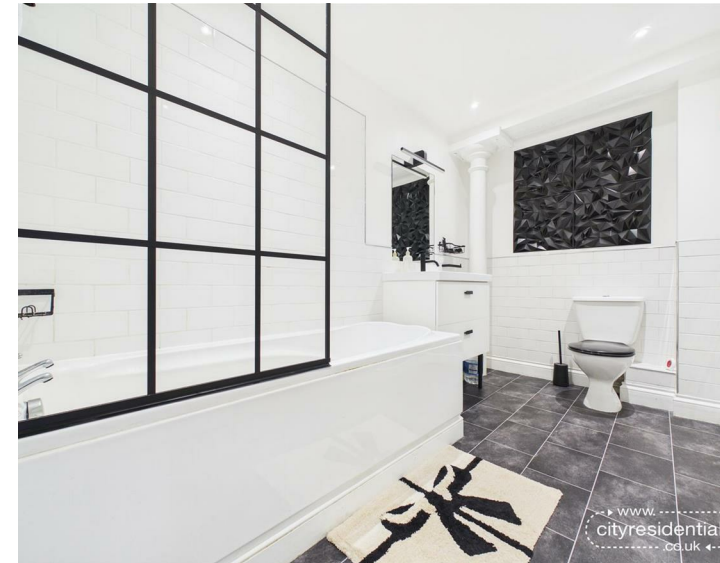
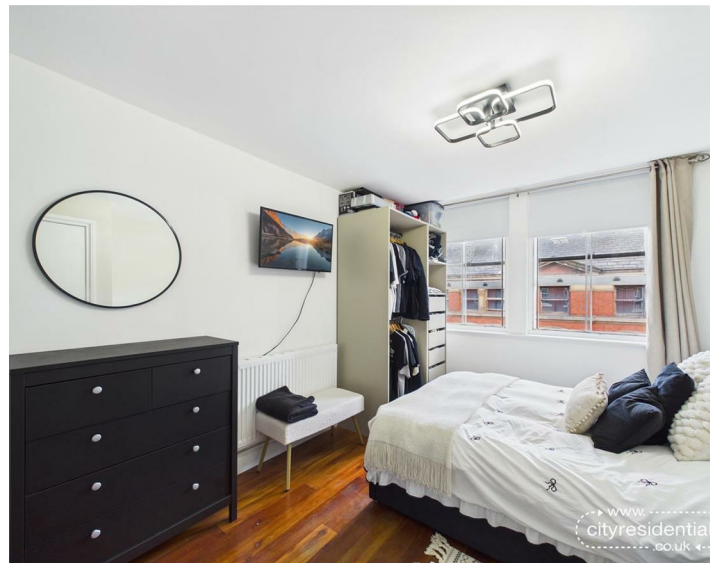
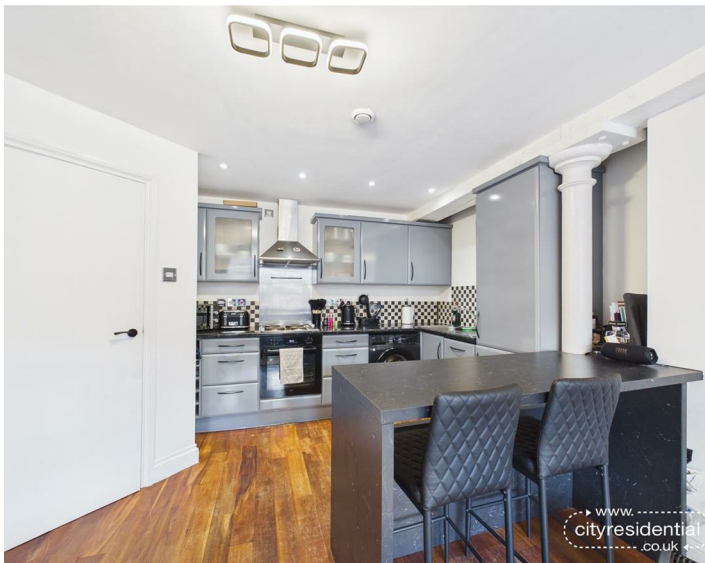




211 Victoria House 25 Victoria Street, Liverpool, L1 6BD
Asking Price £105,000 Leasehold

www.
cityresidential
.co.uk



About the Property

A beautifully presented one bedroom apartment awaits your viewing!

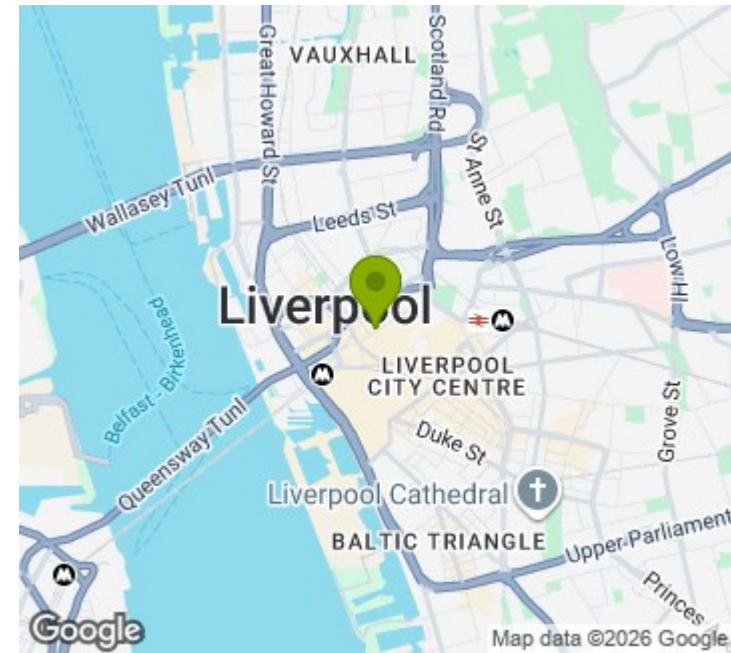
Situated on the top floor of Victoria House right in the heart of the sought after L1 district., this home has been thoughtfully refurbished throughout by the current owner, featuring a modernised kitchen, updated bathroom, and fresh internal decor, all finished to a high standard.

The apartment perfectly balances contemporary design with charming character features, creating a stylish yet welcoming living space. The accommodation comprises a spacious entrance hall with ample storage, an open-plan living and kitchen area complete with a breakfast bar, a well proportioned bedroom, and a sleek family bathroom.

With the very best of city living right on your doorstep, you'll enjoy easy access to a wide range of transport links, as well as an excellent selection of bars, restaurants, and shops. This property represents a fantastic opportunity for owner occupiers looking to embrace city life, or for investors seeking a valuable addition to their portfolio.

Early viewing is highly recommended. Contact us today on 0151 231 6100 to arrange your viewing.

- Top floor one bedroom apartment in the heart of L1
- Refurbished throughout by current owner
- Stylish blend of contemporary design and original character features
- Prime city centre location
- Fantastic opportunity for a range of buyers
- Chain free



Energy Efficiency Rating

	Current	Potential
Very energy efficient - lower running costs		
(92 plus) A		
(81-91) B		
(69-80) C	80	80
(55-68) D		
(39-54) E		
(21-38) F		
(1-20) G		
Not energy efficient - higher running costs		
England & Wales	EU Directive 2002/91/EC	



City Residential
81/87 Victoria Street, The Old Haymarket, Liverpool L1 6DG
T: 0151 231 6100 F: 0151 231 6105
E: sales@cityresidential.co.uk



WWW.
cityresidential
.co.uk