



The Portway, King's Lynn, PE30 5GB



welcome to

The Portway, King's Lynn

* OPEN HOUSE EVENT - 24th April via appointment only *

William H Brown are delighted to offer to market this well presented three bedroom mid terrace home available on a 25% shared ownership basis, offering allocated parking and a convenient location close to the town centre.



Entrance Hall

Kitchen

Wall and Base Units, Sink and Mixer Tap, Gas Hob and Oven, Space for Dishwasher, Double Glazed Window to Front

Lounge

Double Glazed Patio Doors to Rear, Double Glazed Window to Rear, Storage Cupboard, Radiator

Bedroom One

Double Glazed Doors to Balcony, Double Glazed Windows to Rear, Radiator

Bedroom Two

Double Glazed Window to Front, Radiator

Bedroom Three

Double Glazed Window to Front, Radiator

Bathroom

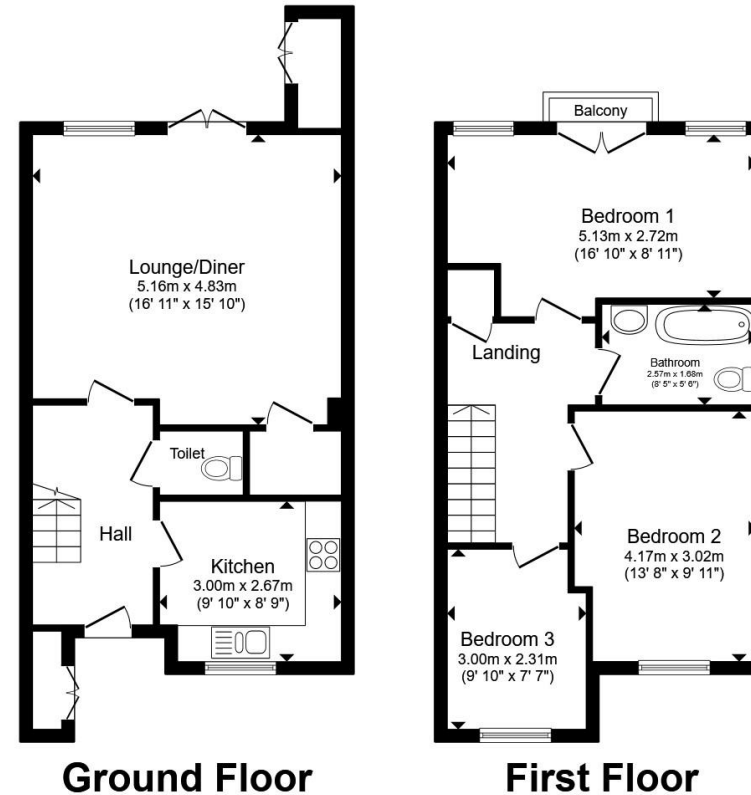
Bath with Overhead Shower, WC, Hand Wash Basin

Outside

Courtyard area to the rear. Allocated Parking Space.

Agents Note

The Land Registry title has yet to be updated with the Vendor's details. Please ask the branch for more details.



Total floor area 93.3 m² (1,004 sq.ft.) approx

This floor plan is for illustrative purposes only. It is not drawn to scale. Any measurements, floor areas (including any total floor area), openings and orientation are approximate. No details are guaranteed, they cannot be relied upon for any purpose and they do not form part of any agreement. No liability is taken for any error, omission or misstatement. A party must rely upon its own inspection(s). Powered by www.propertybox.io



welcome to

The Portway, King's Lynn

- Well Presented Mid Terrace Home
- 25% Shared Ownership
- Scope to Ladder Up and Increase Share
- Three Bedrooms
- Allocated Parking Space

Tenure: Leasehold EPC Rating: C

Council Tax Band: B Service Charge: Ask Agent

Ground Rent: Ask Agent

This is a Leasehold property. We are awaiting further details about the Term of the lease. For further information please contact the branch. Please note additional fees could be incurred for items such as Leasehold packs.

shared ownership

£47,500



Please note the marker reflects the postcode not the actual property

view this property online [williamhbrown.co.uk/Property/KLN119805](https://www.williamhbrown.co.uk/Property/KLN119805)



Property Ref:
KLN119805 - 0002

1. MONEY LAUNDERING REGULATIONS Intending purchasers will be asked to produce identification documentation at a later stage and we would ask for your co-operation in order that there is no delay in agreeing the sale. 2. These particulars do not constitute part or all of an offer or contract. 3. The measurements indicated are supplied for guidance only and as such must be considered incorrect. Potential buyers are advised to recheck measurements before committing to any expense. 4. We have not tested any apparatus, equipment, fixtures or services and it is in the buyers interest to check the working condition of any appliances. 5. Where an EPC, or a Home Report (Scotland only) is held for this property, it is available for inspection at the branch by appointment. If you require a printed version of a Home Report, you will need to pay a reasonable production charge reflecting printing and other costs. 6. We are not able to offer an opinion either written or verbal on the content of these reports and this must be obtained from your legal representative. 7. Whilst we take care in preparing these reports, a buyer should ensure that his/her legal representative confirms as soon as possible all matters relating to title including the extent and boundaries of the property and other important matters before exchange of contracts.

William H Brown is a trading name of Sequence (UK) Limited which is registered in England and Wales under company number 4268443, Registered Office is Cumbria House, 16-20 Hockliffe Street, Leighton Buzzard, Bedfordshire, LU7 1GN. VAT Registration Number is 500 2481 05.



william h brown



01553 771337



KingsLynn@williamhbrown.co.uk



40-42 King Street, KING'S LYNN, Norfolk, PE30 1ES



[williamhbrown.co.uk](https://www.williamhbrown.co.uk)