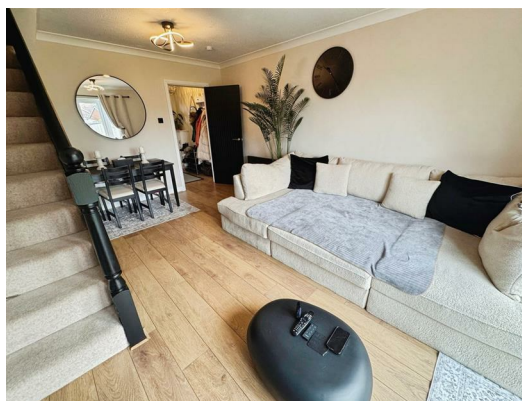




## 3 Peacock Court, Yeadon, Leeds, LS19 7WG £950 Per Month

Fabulous TWO BEDROOM mid town house with allocated parking. The property is ideally located for access to the airport and road links to Leeds and Bradford.



This well presented two-bedroom home would suit a variety of potential tenants given the excellent standard of fixtures, fittings and finish. Located in a sought-after and modern development in the popular area of Yeadon, the home is within easy reach of local amenities, Leeds Bradford Airport, Yeadon Tarn, and convenient transport links to Leeds city centre.

The ground floor offers a welcoming entrance hall with attractive flooring and an alarm system. A contemporary kitchen is positioned at the front of the property, fitted with modern units, appliances, and some 'gifted' white goods. At the rear, the spacious lounge and dining area enjoy direct access to the enclosed garden through French doors. The layout is well-suited to both relaxing and entertaining, with ample space for a dining table and a comfortable seating area.

Upstairs, the master bedroom benefits from fitted wardrobes, built-in storage, and pleasant views over the rear garden. The second bedroom, currently set up as a beauty therapy area, provides an ideal space for home working or second double bedroom. Both rooms are bright and airy, enhanced by upgraded electric heaters and modern flooring throughout. The shower room features a large shower enclosure, wash basin, and toilet.

Outside, the rear garden is fully enclosed and mainly laid to lawn with a paved seating area and shed. To the front of the property, there is an allocated parking space and additional visitor parking nearby. Offering a stylish and practical living environment, this home ticks all the boxes for anyone seeking a move-in ready property in a thriving and convenient location.

**EPC RATING - D**

**COUNCIL TAX BAND - C**

**GROUND FLOOR**

**ENTRANCE**

**KITCHEN**

**LOUNGE**

**FIRST FLOOR**

**LANDING**

**BEDROOM**

**BEDROOM**

**BATHROOM**

**EXTERNAL**

