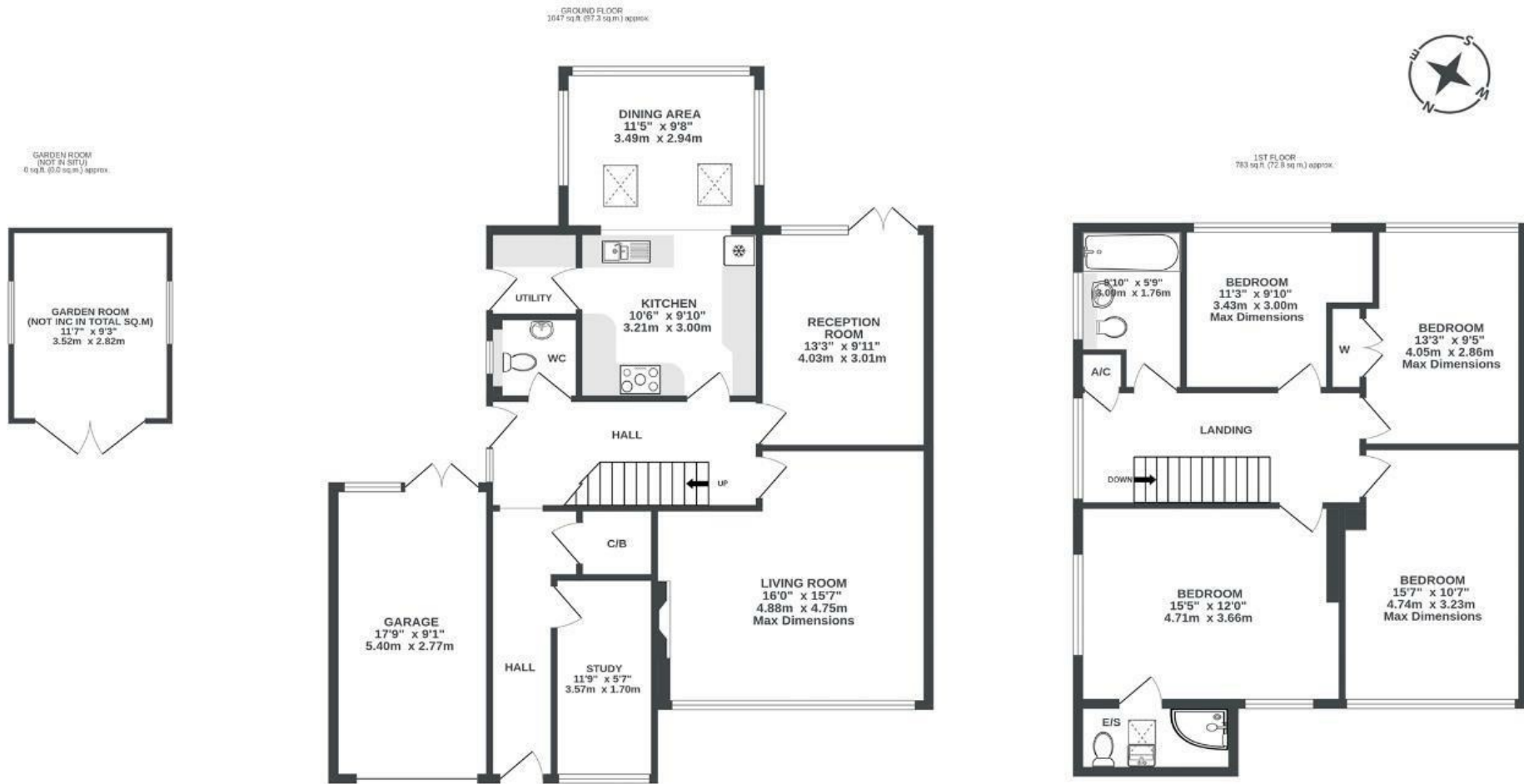


# Long Acres Close

## COOMBE DINGLE

APPROXIMATE FLOOR AREA  
170.1 SQM / 1831 SQFT



Illustrations are for reference purposes only, measurements are approximate, not to scale.

**Boardwalk**

# Long Acres Close , BRISTOL

£

£700,000



BS9 2RF

zZz

4 Bedrooms



2 Bathrooms

*"The very first time we drove into Coombe Dingle we knew we'd found a special part of Bristol. The quiet, woodland village feel seems a million miles from a busy city, not 15 minutes from the centre of Bristol. Funnily enough, the house didn't really make an impression on us until we got inside, where we were amazed by the light and airy feel throughout. It has been the perfect place to raise two small children, with a private garden and their own playroom, and a quiet cul-de-sac for learning to ride bikes."*

