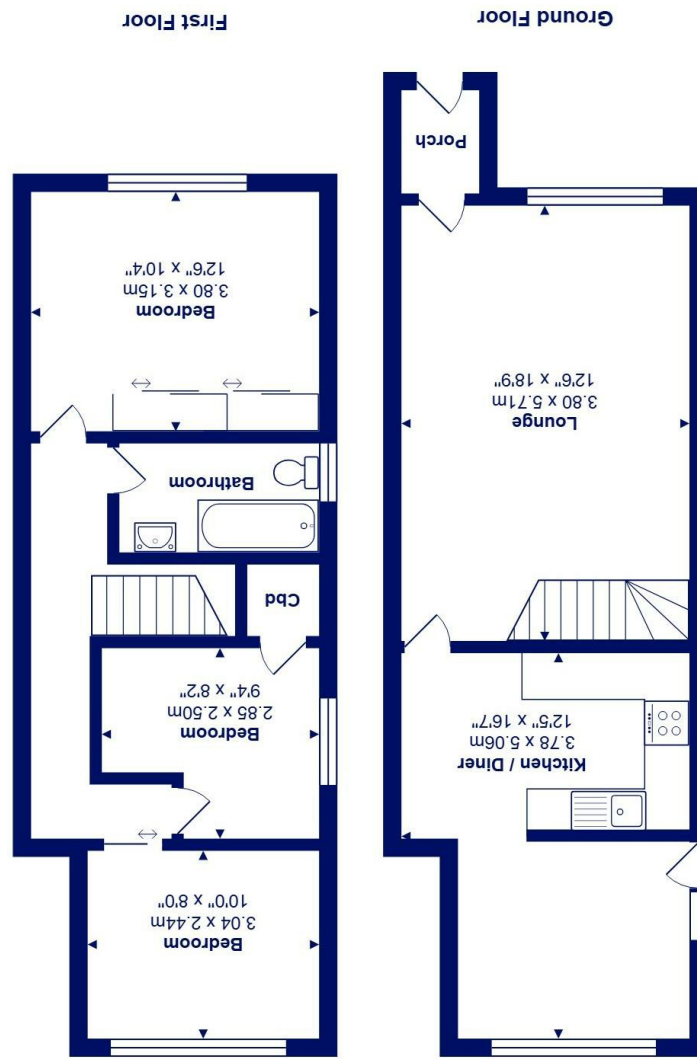




All measurements are approximate and for display purposes only
Total Area: 81.0 m² ... 871 ft²



22 Howard Close, Mudeford, BH23 3HY £365,000

Mitchells
1963 — TODAY

A well maintained and deceptively spacious three bedroom end of terrace property of approaching 900 sq ft. Featuring an extended kitchen/dining room, generous living room, private rear garden and allocated parking.

Situated in this pleasant residential area, close to Mundeford Wood and within walking distance of Avon Beach, Mundeford Quay and local schools. There is also a useful convenience store just around the corner.

- Three bedroom freehold house of nearly 900 sqft
- Spacious lounge
- Extended kitchen/dining room overlooking the garden
- Three well proportioned bedrooms
- First floor family bathroom
- Private rear garden with plenty of room to the side
- Allocated parking space
- Convenient location, within the catchment of local schools
- uPVC double glazing and Gas fired central heating

EPC Rating Band: C
Council Tax Band: C
Freehold

