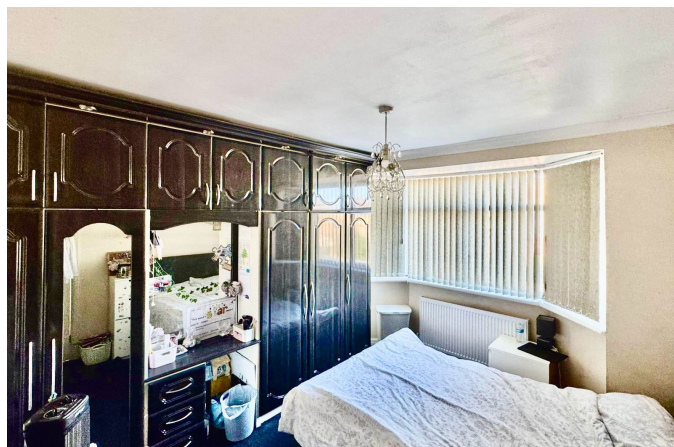
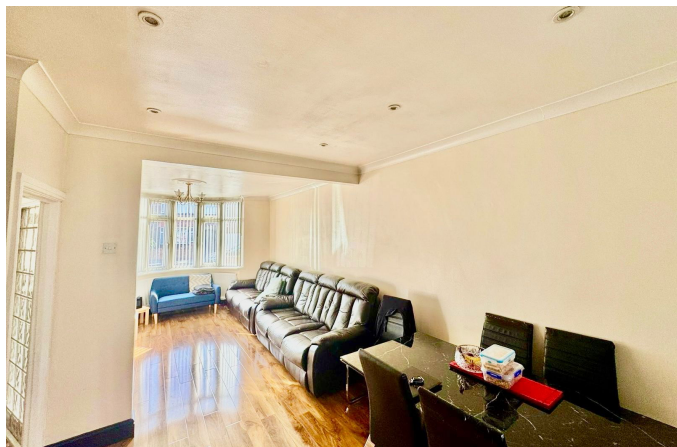


## Nield Road, Hayes, UB3 1SH

£750,000

7 5 2



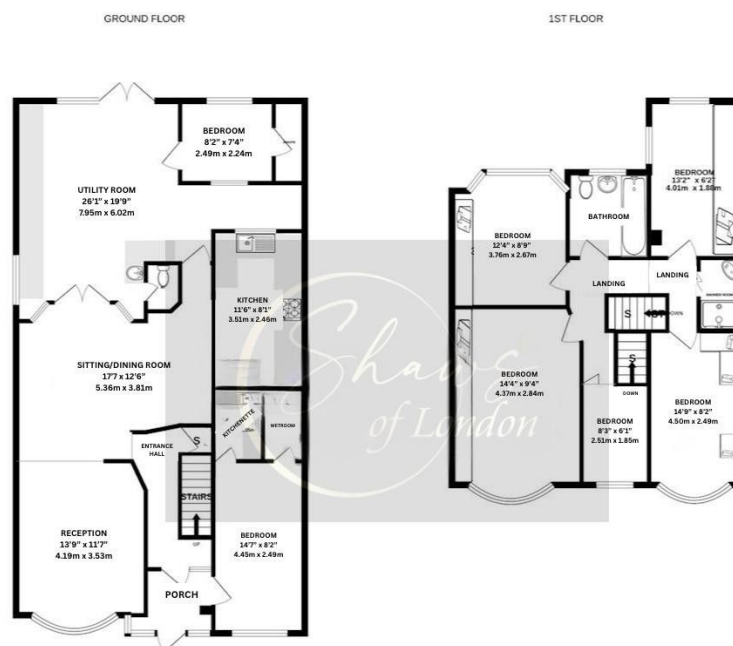
910 Uxbridge Road, Hayes  
Middlesex UB4 0RW

info@shawsoflondon.co.uk  
www.shawsoflondon.co.uk

020 8561 6888

@shawsoflondon

- Seven generously sized bedrooms
- Modern kitchen with ample storage
- Well-maintained private garden
- Perfect for large families
- Four bathrooms, including en-suites and guest W/C
- Large driveway providing off-street parking
- Convenient location close to Hayes Town, local amenities, transport links, and reputable schools
- Excellent investment opportunity




Spacious 7-bedroom, 4-bathroom semi-detached home located just steps from Hayes Town. The property features open-plan living and dining areas, a modern kitchen, ample storage, off-street parking, and a private garden. Extended to the side and rear, it offers exceptional space for large families or investors. Ideally situated near Hayes & Harlington Station, major road links (A312, M4, M25), local amenities, and schools. A rare opportunity in a prime location – viewings highly recommended.

910 Uxbridge Road, Hayes  
Middlesex UB4 0RW

info@shawsoflondon.co.uk  
www.shawsoflondon.co.uk

020 8561 6888

 @shawsoflondon