



Defoe Road, N16

£725,000

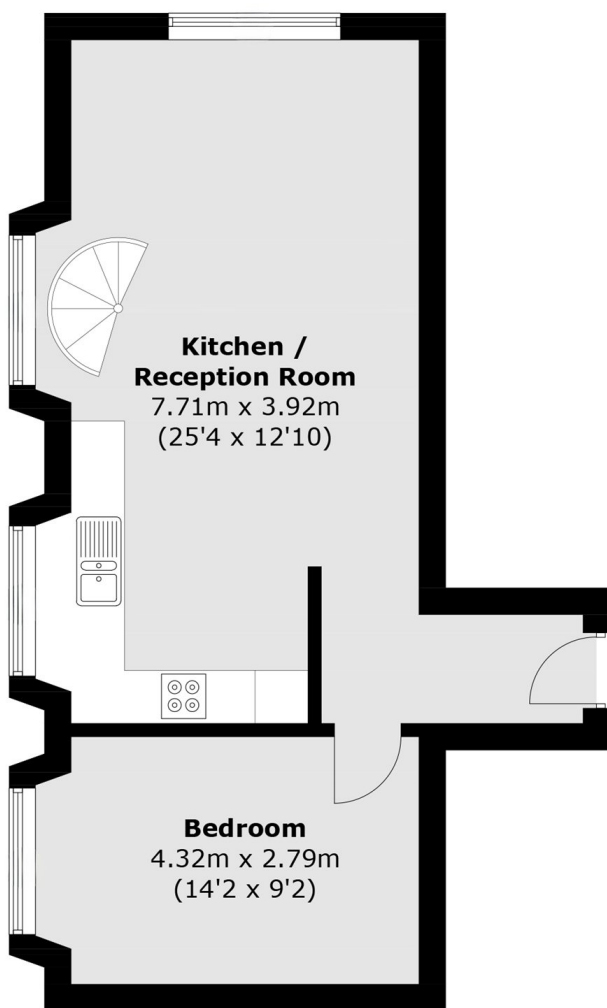
A well-presented flat set within St Mary's Court. Offering bright and comfortable living space throughout with dual aspect windows and double height ceilings. The property benefits from a practical layout with well-proportioned rooms, creating a functional home with striking features.

Positioned within easy reach of Stoke Newington Church Street this home is ideal for access to nearby cafés, shops, green spaces, and excellent transport links. Defoe Road sits in a sought-after part of N16 providing convenient connections into Central London while retaining a neighbourhood feel.

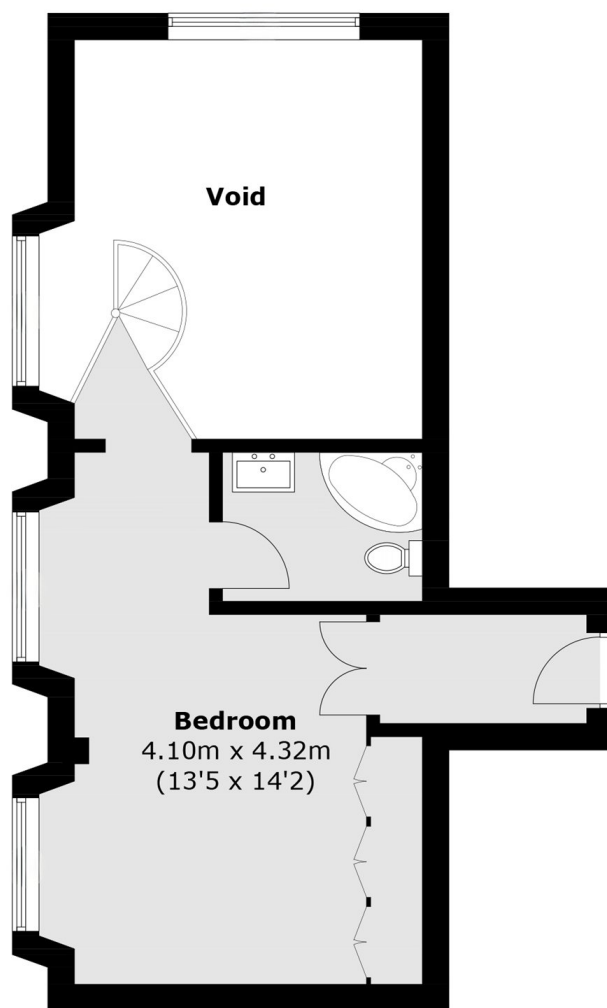
Features

- Two Bedrooms
- Church Conversion
- Dual Aspect Windows
- High Ceilings
- Open Plan
- Storage

Defoe Road, London, N16



Second Floor



Mezzanine

Total area (approx.): 74.2 sq. m (798.6 sq. ft)
(Including Mezzanine / Excluding Void)