



11, Luciefelde Road, Shrewsbury, SY3 7LB

£1,650 Per Month



11, Luciefelde Road, Shrewsbury, SY3 7LB

£1,650 Per Month

VIRTUAL TOUR AVAILABLE: Attractive three bedroom semi-detached house in a highly sought after residential location a short walk from Shrewsbury town centre and in the catchment of both Priory and Coleham schools. Benefitting from south west facing gardens, driveway parking and a detached garage.

Available: Immediately

Description

Comprising: Porch, entrance hall with storage cupboard, large living room with bay window, further reception room to the rear, new kitchen including double Bosch oven, induction hob, Belfast sink, dishwasher and washing machine. Stairs to first floor landing, two double bedrooms, one large single bedroom, modern family bathroom including shower, separate WC. Gas central heating, double glazing. Driveway parking for two cars. Detached garage including electrical connection. Large mature south west facing garden including lawn and established beds & patio area. Curtains and blinds including throughout. EPC D



Unfurnished

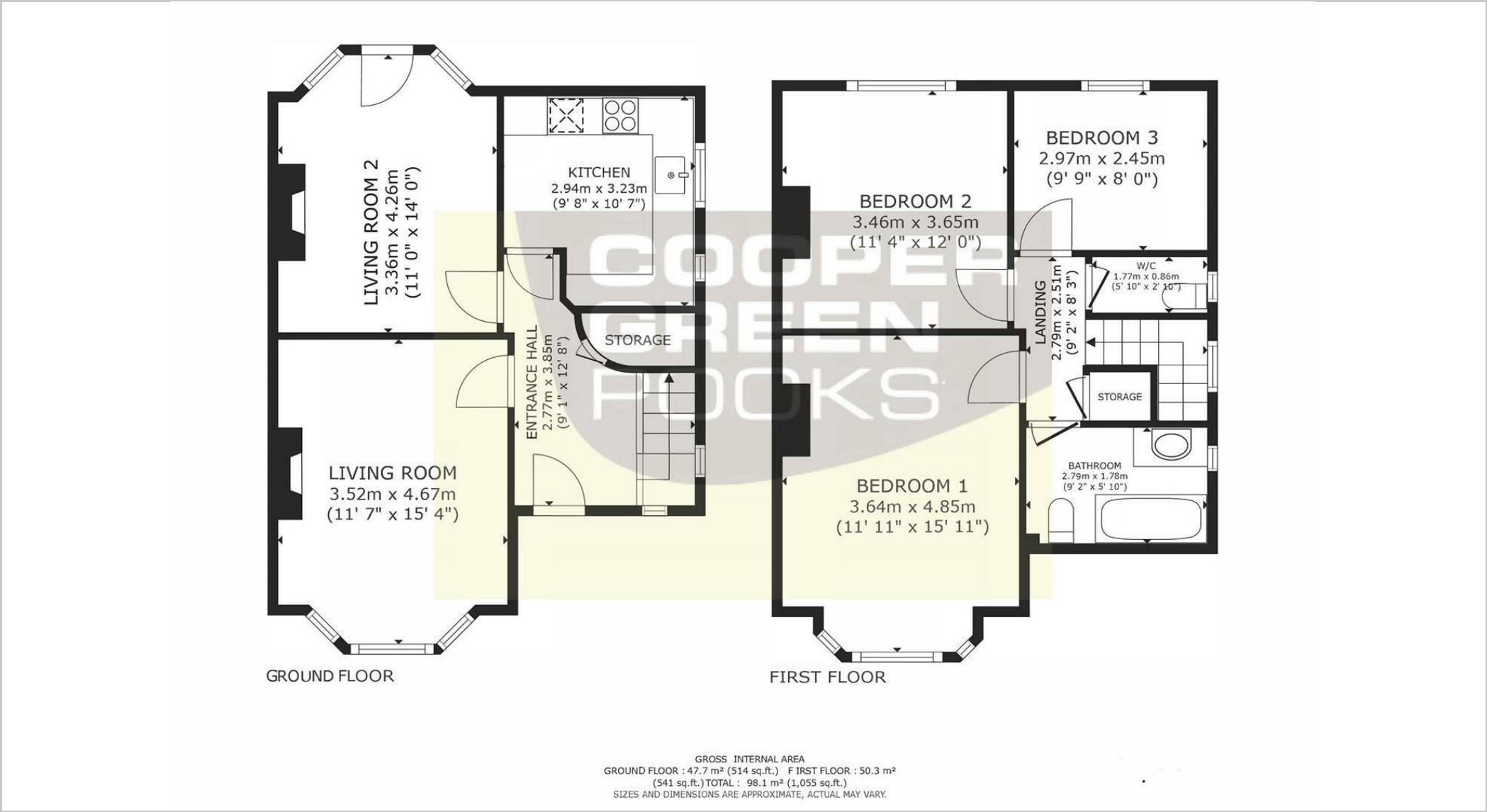
Council Tax Band: D

Available: 2nd February 2026

EPC: D



Floor Plans



These particulars, whilst believed to be accurate are set out as a general outline only for guidance and do not constitute any part of an offer or contract. Intending purchasers should not rely on them as statements of representation of fact, but must satisfy themselves by inspection or otherwise as to their accuracy. No person in this firms employment has the authority to make or give any representation or warranty in respect of the property.