



## Felsham Road, SW15

£525,000

Set within a handsome building block, this bright and well-proportioned three-bedroom flat offers comfortable living in the heart of Putney.

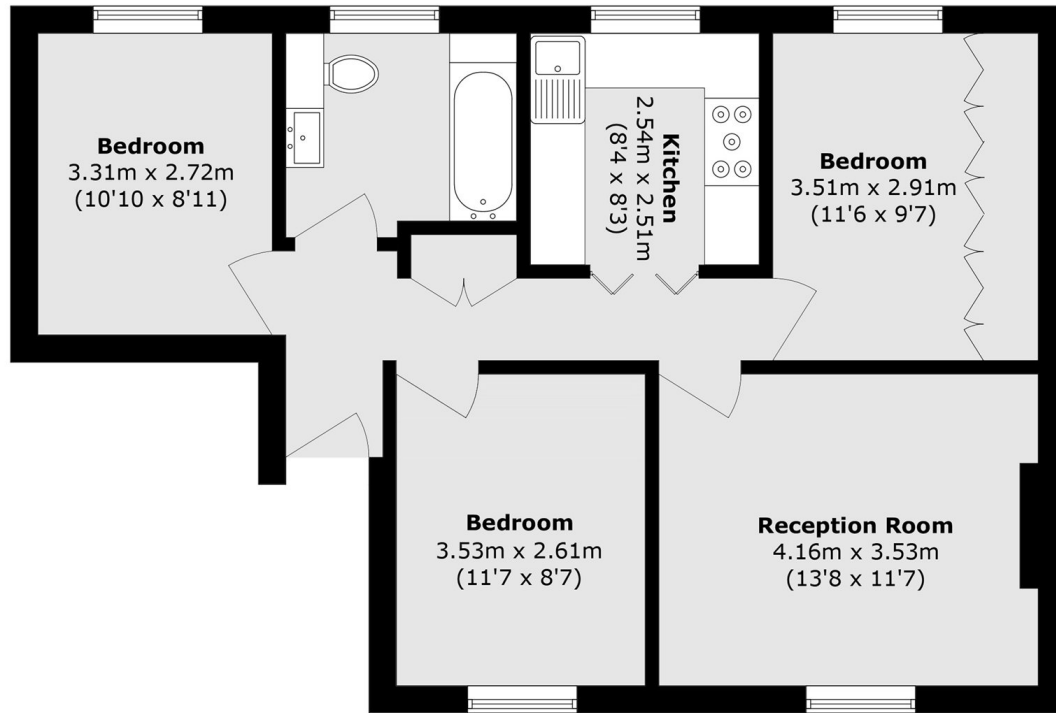
The property features a spacious reception room with attractive parquet flooring and plenty of natural light, alongside a separate modern kitchen with sleek units and generous worktop space. There are three well-sized bedrooms, offering flexibility for sharers, families or a home office, all served by a contemporary bathroom. Residents also benefit from access to a well-kept communal garden.

Excellent transport links are close by, including Putney Station with direct trains to Waterloo, Putney Bridge and East Putney Underground Station, plus a variety of local bus routes.

### Features

- Three Bedrooms
- One Bathrooms
- 683 Sq. Ft
- Communal Garden
- Quiet Road
- Close to Putney High Street

# Felsham Road, London, SW15



Total area (approx.): 63.5 sq. m (683.5 sq. ft)