

80 Beaconfield Road

Epping, Essex

Guide Price £600,000

Filled with warmth, this three bedroom family home is sat moments from Epping high street and is filled with scope to add your own stamp. A neighbourhood that has it all, this is a great place to set up home.

Council Tax band: D

Tenure: Freehold

- Opportunity to extend (STP)
- Driveway
- Utility Room
- Ground floor WC
- Short walk to Epping high street



Hallway

Lounge / Dining Room

22' 1" x 11' 2" (6.73m x 3.40m)

Kitchen

10' 4" x 8' 11" (3.16m x 2.72m)

Utility Room / WC

6' 4" x 5' 0" (1.92m x 1.52m)

Bedroom

13' 6" x 13' 0" (4.12m x 3.96m)

Bedroom

13' 6" x 9' 1" (4.12m x 2.78m)

Bedroom

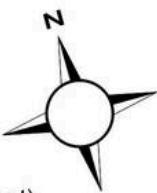
7' 10" x 6' 6" (2.39m x 1.99m)

Bathroom

7' 5" x 5' 6" (2.27m x 1.67m)

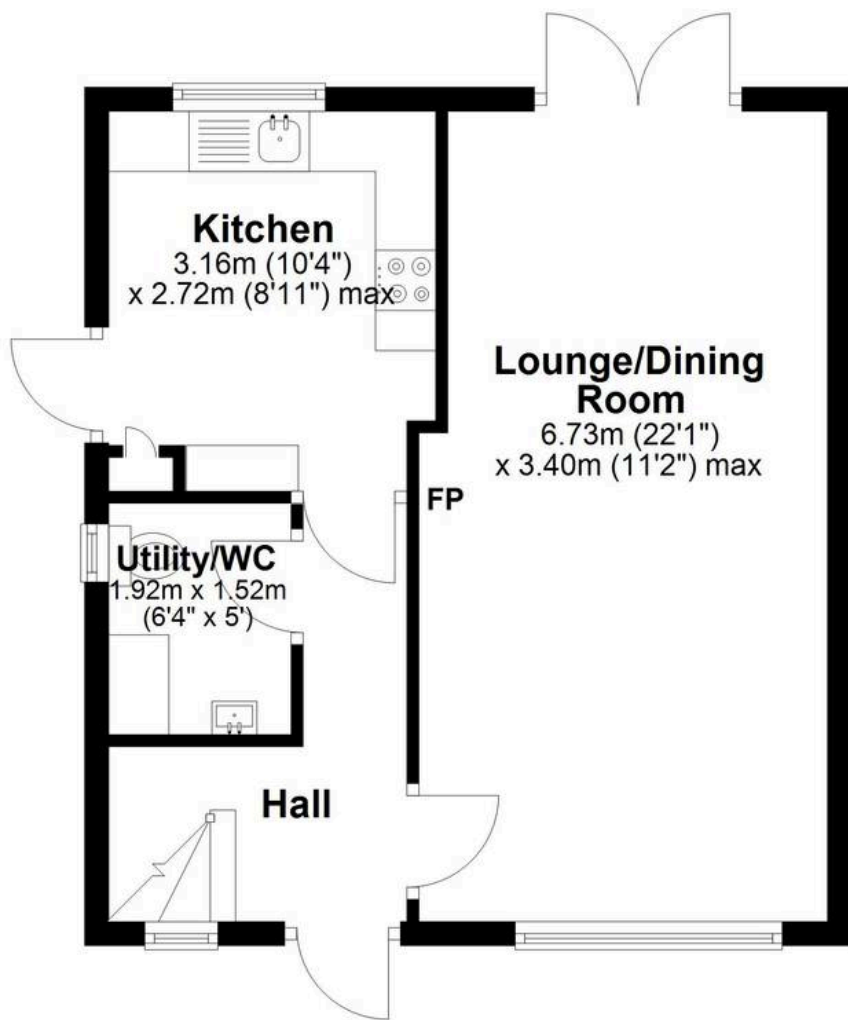






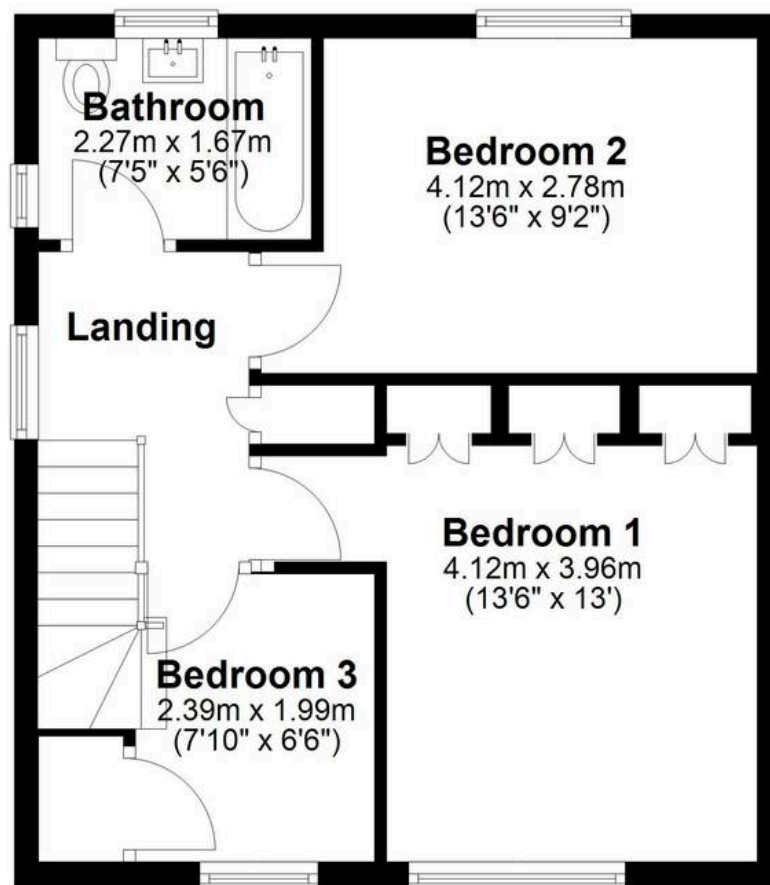
Ground Floor

Approx. 40.2 sq. metres (432.8 sq. feet)



First Floor

Approx. 42.3 sq. metres (454.9 sq. feet)



Total area: approx. 82.5 sq. metres (887.7 sq. feet)