

25 Samuel Close Pownall Road, London, E8 4SG

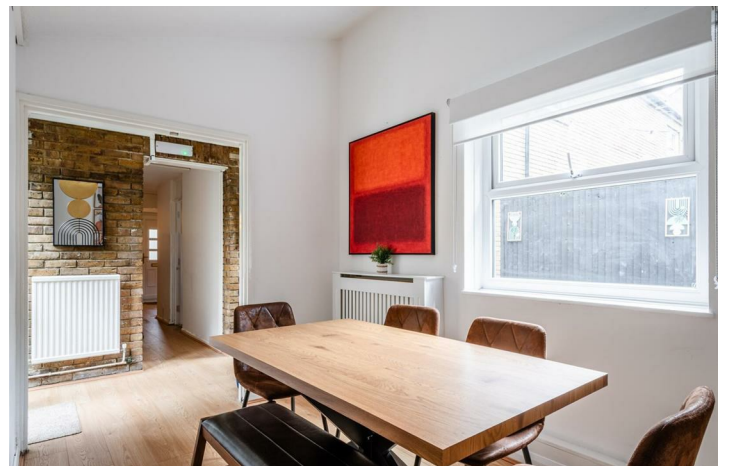
£675,000

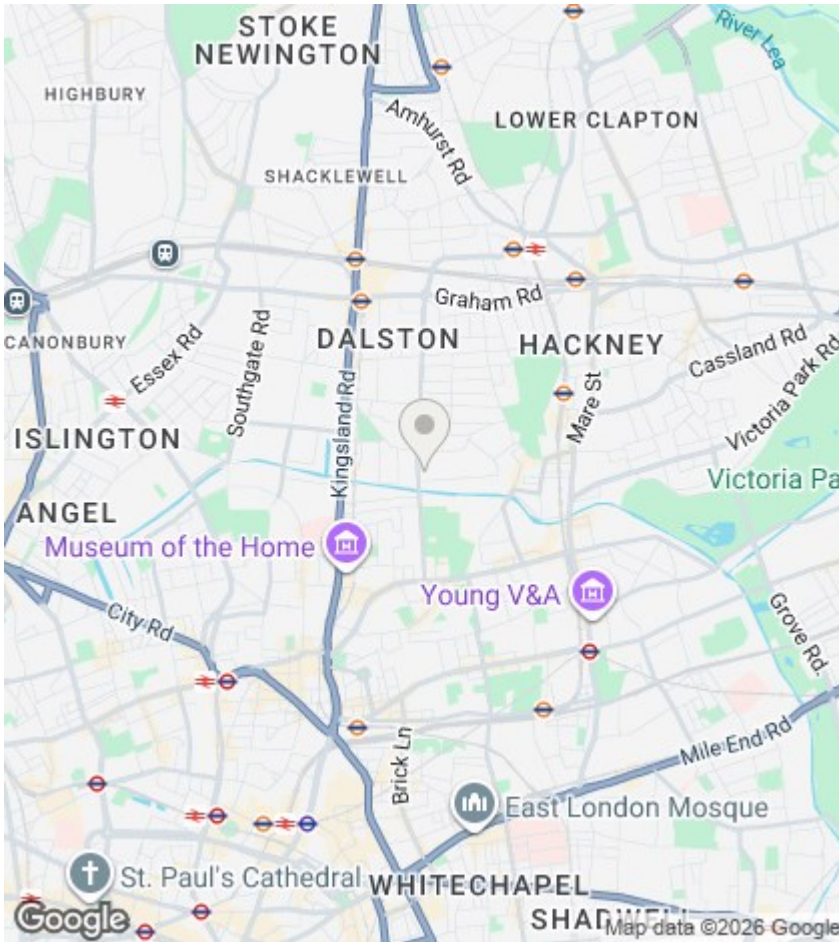
25 Samuel Close Pownall Road, London E8 4SG

Blakestanley offers to the market this bright, three bedroom, ground floor apartment with private garden and separate courtyard by Hackney's treasured Regent's Canal. Totalling 920sqft (85sqm) of living space, the home comprised of a kitchen with space for dining, a separate dual-aspect reception room, a modern three piece bathroom with walk in shower, a separate w/c, three bedrooms, and two private outside spaces. It's location enjoys being a true local to the hot spots of Broadway Market, Columbia Road, London Fields, Shoreditch and Haggerston Park. Both Haggerston and Hoxton Overground stations are within short walking distance. Offered chain free.



Council Tax Band: D





Directions

Viewings

Viewings by arrangement only. Call 020 7254 7554 to make an appointment.

EPC Rating:

Energy Efficiency Rating		Current	Potential
Very energy efficient - lower running costs			
(92 plus) A			
(81-91) B			
(69-80) C			
(55-68) D			
(39-54) E			
(21-38) F			
(1-20) G			
Not energy efficient - higher running costs			
England & Wales		EU Directive 2002/91/EC	

