



Cumberland Mansions, Brown Street,
Marylebone, W1H

£795 Per Week,

NAPIER WATT

T: 0207 935 0011
E: enquiries@napierwatt.co.uk
W: napierwatt.co.uk

35 Berkeley Square, Mayfair, London, W1J 5BF







Description

A spacious one-bedroom apartment is set on the raised ground floor of a beautiful red brick mansion block with an onsite caretaker. The property boasts high ceilings, large bay windows, and feature fire place. The separate kitchen and bathroom are both well fitted with under floor heating and the large bedroom benefits from a wall of built-in storage. Cumberland Mansions is set on a quiet road just around the corner from Marble Arch Tube station (Central Line, Zone 1) offering easy access to Liverpool Street and West London. Close by is an array of boutique shops and restaurants as well as a further selection of supermarkets and cafes which can be found on Baker Street. The property is also walking distance to both Hyde and Regent's Park.

1 Bedroom : 1 Bathroom : Resident Caretaker : EPC Rating C : Westminster Council Band D

Key Features

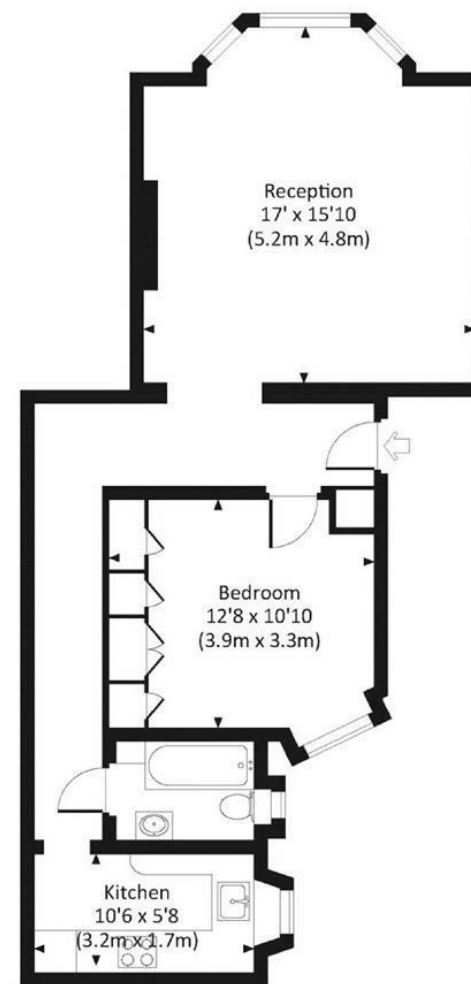
- HIGH CEILINGS
- RESIDENT PORTER
- FIREPLACE
- RAISED GROUND FLOOR
- BAY WINDOWS
- ELEGANT STYLISH HOME

Terms

Fees & Charges: Tenancies exceeding £100,000 Per annum £480 inc VAT, Tenancies where a company is a tenant £480 Inc VAT.

CUMBERLAND MANSIONS, BROWN STREET, W1H

Approx. gross internal area
632 Sq Ft. / 58.7 Sq M.



RAISED GROUND FLOOR

djd All measurements have been made in accordance with RICS Code of Measuring Practice which are approximate only and only for illustrative purposes. For the avoidance of doubt, Dowling Jones Design shall not be liable for any reliance on these measurements. © 2015 www.dowlingjones.com 020 7610 9933

IMPORTANT: We would inform prospective purchasers that these sales particulars have been prepared as a general guide only. A detailed survey has not been carried out, nor the services, appliances and fittings tested. Room sizes should not be relied upon for furnishing purposes and are approximate. If floor plans are included, they are for guidance only and illustration purposes only and may not be to scale. If there are any important matters likely to affect your decision to buy, please contact us before viewing the property.