



Northfield Avenue, W13

£550,000

A larger-than-average three-bedroom flat, beautifully presented throughout and benefiting from its own private entrance. The property offers generous living space, well-proportioned bedrooms, and a modern bathroom, with potential to extend into the loft (STTP). Offered to the market chain-free.

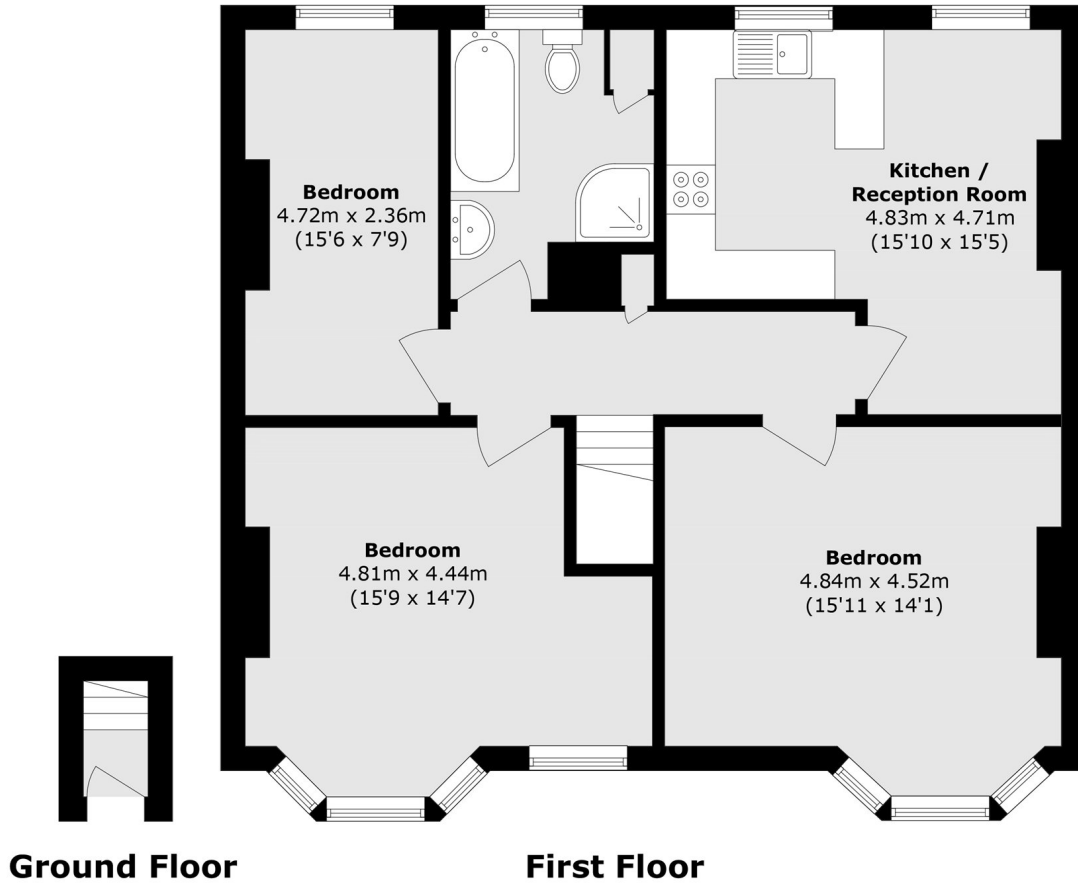


This beautiful flat, filled with natural light throughout, includes two double bedrooms, one single bedroom, a bathroom, and a kitchen/dining room.

Ideally located for both Northfields station (Piccadilly) & West Ealing station (Elizabeth line) which provide easy access to central London. Local parks to enjoy include Lammas, Walpole & Elthorne. An array of shops & restaurants along Northfields Avenue to chose from.

- No Onward chain • Long Lease • Excellent Transport Links •
 - Local Parks • Three Bedroom • Outstanding Schools •
-





Total area (approx.): 90.9 sq. m (978.4 sq. ft)

Robertson Smith & Kempson Northfields Sales
116 Northfield Avenue,
London, W13 9RT
020 8566 2340
northfieldssales@robertsonsmithandkempson.co.uk

Energy Rating: E. We aim to make our particulars both accurate and reliable. However they are not guaranteed; nor do they form part of an offer or contract. If you require clarification on any points then please contact us, especially if you're traveling some distance to view. Please note that appliances and heating systems have not been tested and therefore no warranties can be given as to their good working order.