



Victory Grove, Norwich - NR5 0US

**STARKINGS
&
WATSON**

HYBRID ESTATE AGENTS



Victory Grove

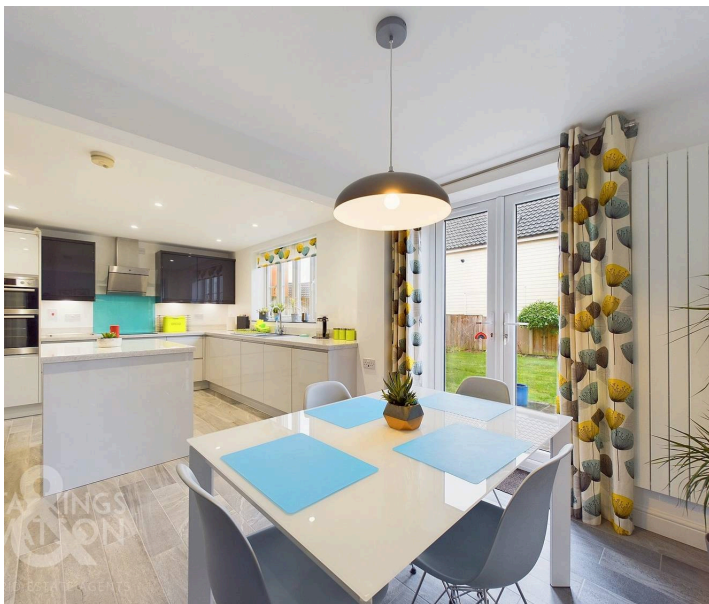
Norwich

This stunningly presented detached EXECUTIVE home being just over 1400 sq. ft (stms) is set back on a LARGER THAN AVERAGE PLOT, with the perfect blend of MODERN and FUNCTIONAL living space. Stepping in to the welcoming lobby you will have access to the 20' dual aspect SITTING ROOM adjacent to the BAY FRONTED separate DINING ROOM with an ever sought after downstairs two piece CLOAKROOM essential for a large family home. The downstairs accommodation is finished with a STUNNING and NEWLY FITTED open plan KITCHEN and BREAKFAST room, with HIGH GLOSS storage and a range of INTEGRATED APPLIANCES, set around modern fitted work surfaces making the perfect space for the family to start and finish each day plus use of a handy UTILITY ROOM. The first floor gives access to FOUR BEDROOMS, three piece FAMILY BATHROOM as well as NEWLY FITTED en-suite SHOWER ROOM. Externally the property benefits from a DRIVEWAY and DOUBLE GARAGE as well as a GENEROUS garden.

Council Tax band: E

Tenure: Freehold

EPC Energy Efficiency Rating: C



- Family Bathroom & En-Suite
- Ample Parking With Driveway & Double Garage
- Private Manicured Rear Garden
- Separate Utility Room
- 1420 Sq.ft Detached Family Home (stms)
- 20' Sitting & Separate Dining Room
- Open Kitchen & Breakfast Room

Nearby you will find a variety of local amenities including shops , hardware store, post office etc. Local schooling is located close by up to Secondary level, whilst a wealth of public transport leads to Norwich and the nearby Retail Parks. To the rear of the property, access leads to the local play area and Marriott' Way for walking and cycling. A variety of bus routes lead to Norwich City Centre, with Longwater Retail Park located only a short drive with a park and ride service to Norwich.

SETTING THE SCENE

Turning off the quiet road set towards the top of this development you will find the property access through the private concrete driveway with shingled garden borders and low level hedging.



THE GRAND TOUR

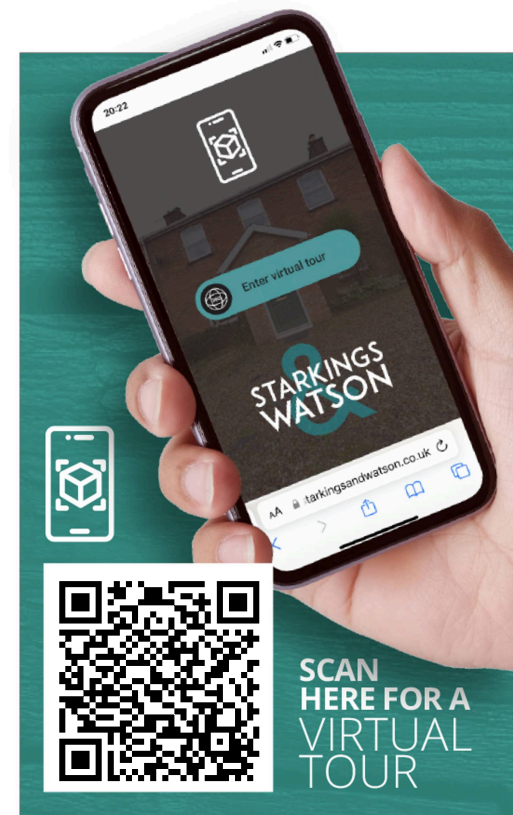
As you enter the front door you will firstly notice the abundance of space to offer in this executive home. Tiled flooring lines the entrance lobby giving access to multiple rooms and stairs to the first floor. To your right is a 20' sitting room with carpeted flooring underfoot, double aspect lighting from both the front of the room and the rear via the uPVC French doors leading to the garden. This large open space allows the occupiers to configure their chosen layout as they see fit giving multiple options to consider. Adjacent from this room is the bay fronted dining room with wooden effect flooring and ample space for additional soft furnishings. This room also has the potential to be a snug living room if so desired. Nestled between this and the kitchen space is the cloakroom with tiled flooring, radiator, ceramic wash basin and toilet. To the rear of the property is the open plan kitchen and breakfast room offering the ultimate social space for this home whether that be for entertaining guests or bringing the family together over breakfast or dinner. The well lit open space offers a seating area in front of the uPVC French doors to the rear garden with the kitchen sitting just next to this. The tiled flooring will lead you into the kitchen set around a central island and benefitting from ample high gloss wall and base mounted soft close storage, integrated double oven, electric hob with extraction above and glass splashback, quality work surfaces, integrated fridge and freezer plus composite sink overlooking the rear garden. Nestled in just behind the kitchen is the utility room with the same tiled flooring as the kitchen area, inset sink set underneath eye level storage and plumbing for the washing machine and also granting access to the rear garden space too.

Heading up to the first floor you will find a centralised landing with access into the four bedrooms as well as family bathroom. Heading directly to the right you will find the smaller of the four bedrooms with carpeted flooring underfoot, gas fired radiator and white painted finish. Sitting across the hallway is the third bedroom with similar carpeted flooring, radiator and uPVC window over the rear aspect of the property. Between both of these rooms lies the three piece family bathroom with half high gloss tiled surround, bath with wall mounted shower and glass screen, low level wash basin, toilet and radiator. Towards the front of the property is the second largest room sitting above the dining space with the protruding frontage, carpeted flooring, uPVC double glazed window and double built in wardrobe space. Finally, the main bedroom also to the front of the property also benefits from built in wardrobes as well as en-suite shower room with a high quality finish, walk in shower, sink with low level vanity storage, toilet and heated towel rail.

FIND US

Postcode ; NR5 0US

What3Words : ///crouching.done.supposing







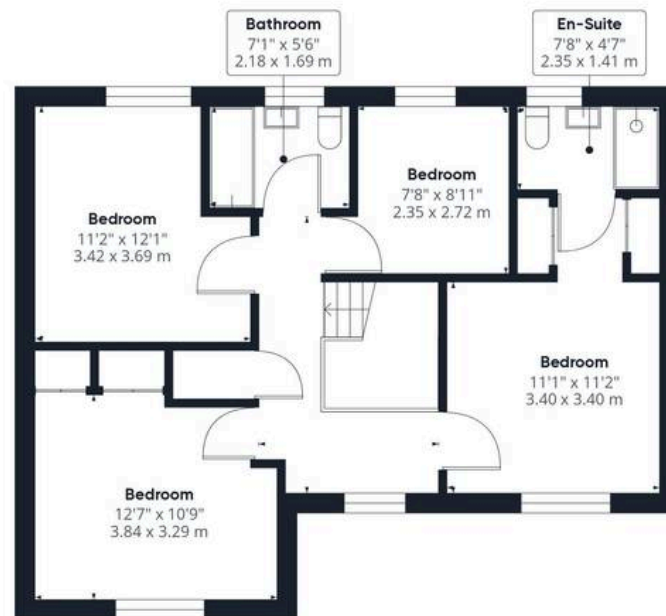
THE GREAT OUTDOORS

The front of the property makes use of a large concrete driveway granting access to the double garage with up and over doors. Behind this is a much larger than expected and handy additional space for external storage also with the frontage finished with well maintained lawn and shingle garden. The rear of the property is bordered by timber fencing with a predominantly laid to lawn garden space, flagstone patio area, shingled side garden space with wooden shed for external storage and planting garden and borders surrounding the edges. The front and rear gardens are separated by a timber gate.





Ground Floor



Floor 1

Approximate total area⁽¹⁾

1421.27 ft²

132.04 m²

Reduced headroom

15.32 ft²

1.42 m²

Excluding balconies and terraces

Reduced headroom
(below 1.5m/4.92ft)

While every attempt has been made to ensure accuracy, all measurements are approximate, not to scale. This floor plan is for illustrative purposes only.

GIRAFFE 360



Starkings & Watson Hybrid Estate Agents

196 Norwich Road, Costessey - NR5 0EX

01603 336446 • costessey@starkingsandwatson.co.uk • starkingsandwatson.co.uk/

Disclaimer: Whilst every care has been taken to prepare these sales particulars, they are for guidance purposes only. All measurements are approximate and for general guidance purposes only and whilst every care has been taken to ensure their accuracy, they should not be relied upon and potential buyers are advised to recheck the measurements.