


HOME  TRUTHS

179 Brookwood Way, Buckshaw Village

Chorley

 £1,300 pcm



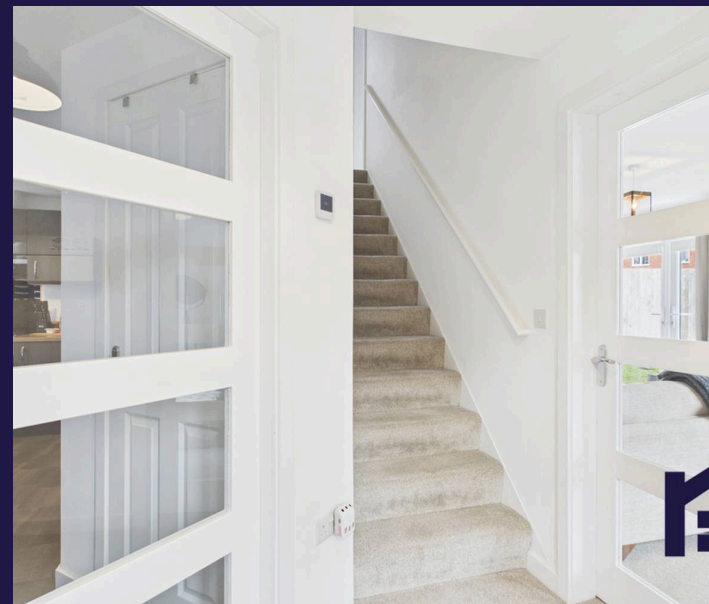
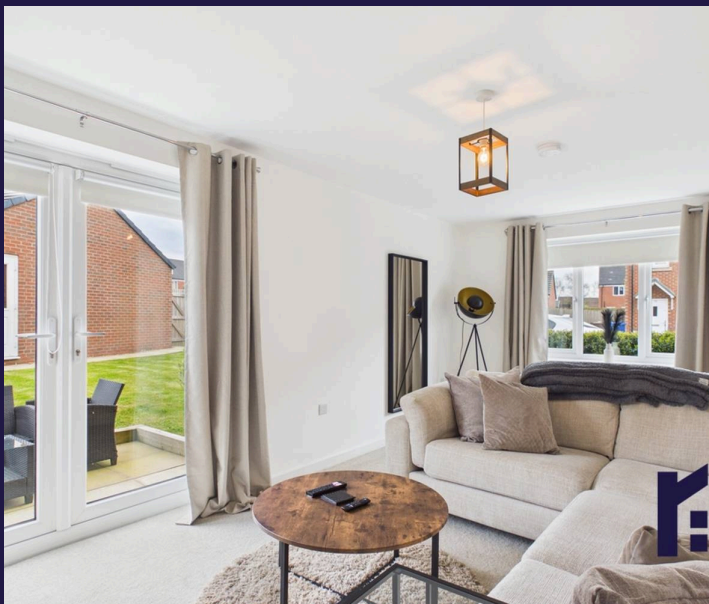
## 179 Brookwood Way

Buckshaw Village, Chorley

The property briefly comprises of an entrance hallway, modern kitchen diner with fitted units and integrated appliances including fridge, freezer, electric oven and dishwasher. Just off from the kitchen is a separate utility room and downstairs wc. The bright and airy lounge has patio doors leading out to the garden.

Externally, this fabulous property has a private drive for one car leading to the detached garage. The large garden is mainly laid to lawn with small patio area and gates leading out to both sides of the property.

This delightful home is in the catchment area for some excellent schools and is the perfect place for a family home. Do give us a call to arrange a viewing and make it yours. The property is available from June 2026 and requires a deposit of £1500, including a holding deposit of £300. Council Tax Band D, EPC B.



# 179 Brookwood Way

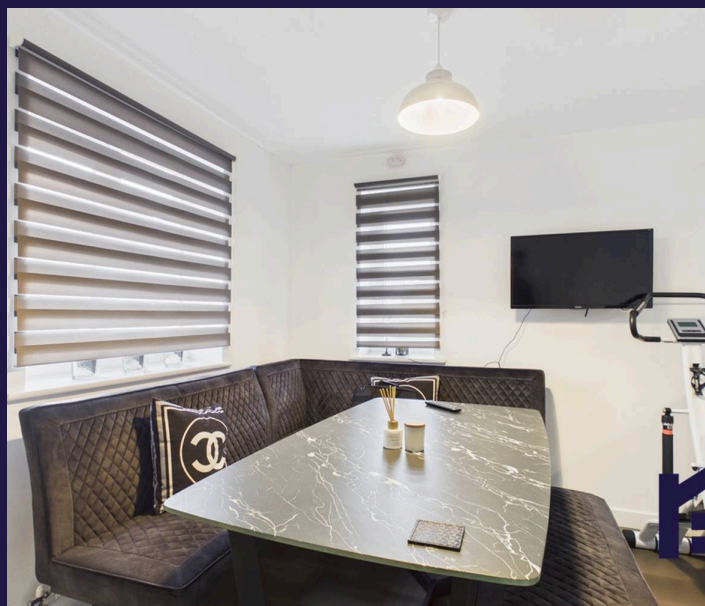
Buckshaw Village, Chorley

A fantastic, detached house with three bedrooms, three bathrooms, driveway, single garage and large private sunny garden.

EPC Energy Efficiency Rating: B

EPC Environmental Impact Rating: B

- Zero Deposit Scheme available
- Virtual tour
- Detached three-bedroom family home
- Large private rear garden with patio area
- Driveway parking and detached single garage

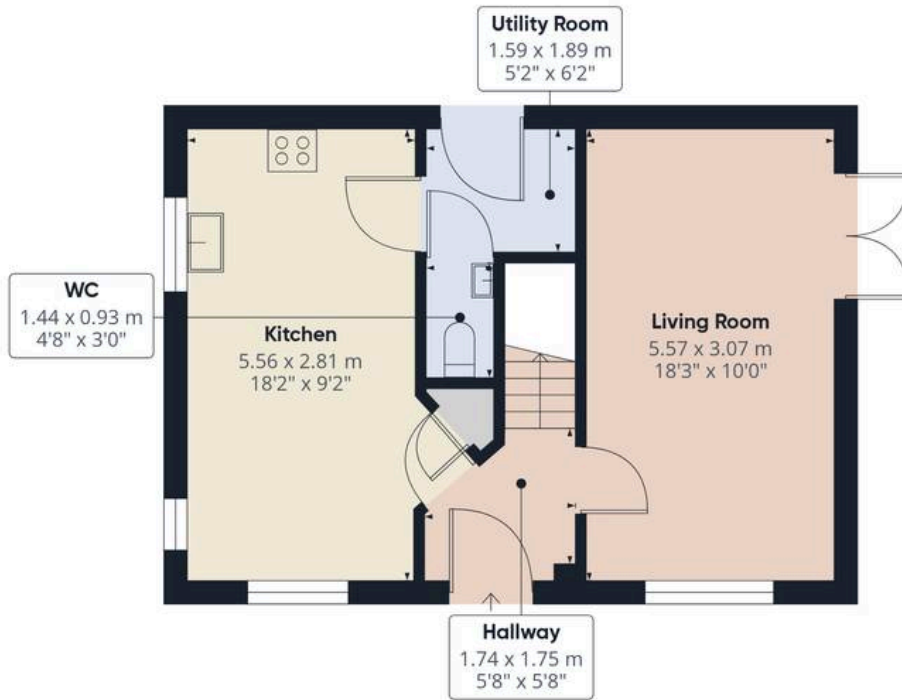


HOME  TRUTHS

Eccleston Branch  
265 The Green, Eccleston, PR7 5TF  
01257 451673

Coppull Branch  
244 Spendmore Lane, Coppull, PR7 5DE  
01257 794588

[www.hometruthslancs.co.uk](http://www.hometruthslancs.co.uk)  
[office@hometruthslancs.co.uk](mailto:office@hometruthslancs.co.uk)



Floor 1



Floor 2

Approximate total area<sup>(1)</sup>

83.8 m<sup>2</sup>

901 ft<sup>2</sup>

(1) Excluding balconies and terraces

Calculations reference the RICS IPMS 3C standard. Measurements are approximate and not to scale. This floor plan is intended for illustration only.

GIRAFFE 360

