



Birchwood Grove, TW12

£775,000

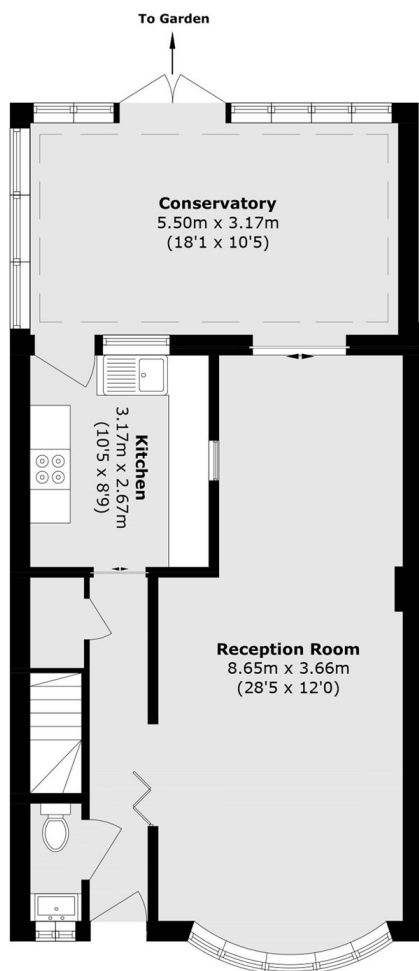
This Neo-Georgian three bedroom, two bathroom house comes with a garage, private garden and no onward chain. We are anticipating a lot of interest so please do drop us a call to view.

Birchwood Grove is a quiet cul de sac located off Acacia Road. This is an ideal spot for those looking to be close to Hampton High School or LEH and Hampton Boys. The High Street and Bushy Park are only a short stroll away.

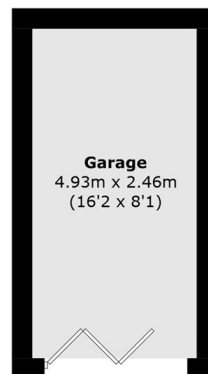
Features

- Three Bedrooms
- Two Bathrooms
- No Onward Chain
- Private Garden
- Garage
- Conservatory

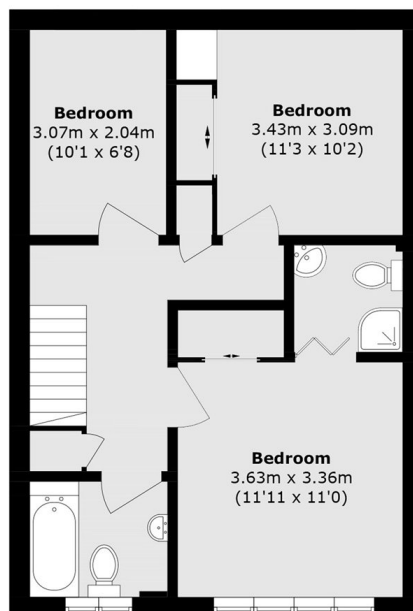
Birchwood Grove, Hampton, TW12



Ground Floor



Ground Floor



First Floor

Total area (approx.): 114.4 sq. m (1231.4 sq. ft)

Garage area (approx.): 12.1 sq. m (130.2 sq. ft)

Dexters

Hampton
93 Station Road
Hampton
TW12 2BD
Sales
020 8255 7777

Energy Rating: . We aim to make our particulars both accurate and reliable. However they are not guaranteed; nor do they form part of an offer or contract. If you require clarification on any points then please contact us, especially if you're traveling some distance to view. Please note that appliances and heating systems have not been tested and therefore no warranties can be given as to their good working order.

 **RICS** | Regulated
Estate Agent
and Letting Agent

[dexters.co.uk](https://www.dexters.co.uk)