

**SW19**

*it's all in the postcode...*



**36 Montague Road**  
Wimbledon

**Monthly Rental Of £2,100**

- Two Bedrooms
- Two Bathrooms
- Secure Parking
- 2nd Floor
- Part Furnished
- Communal Gardens
- Council tax Band D
- EPC Rating B



020 8544 2828

Wimbledon: Wimbledon Park: Colliers Wood

[www.SW19.com](http://www.SW19.com)

SW19 Estate Agents Ltd. Is registered in England & Wales No. 05508737

*it's all in the postcode...*

This lovely two double bedroom two bathroom second-floor apartment in Burleigh Lodge is well presented throughout, perfect for those seeking comfort and convenience. With secure parking and excellent transport links, it's ideal for commuters. Don't miss the opportunity to make this your new home. Available from 30th April.

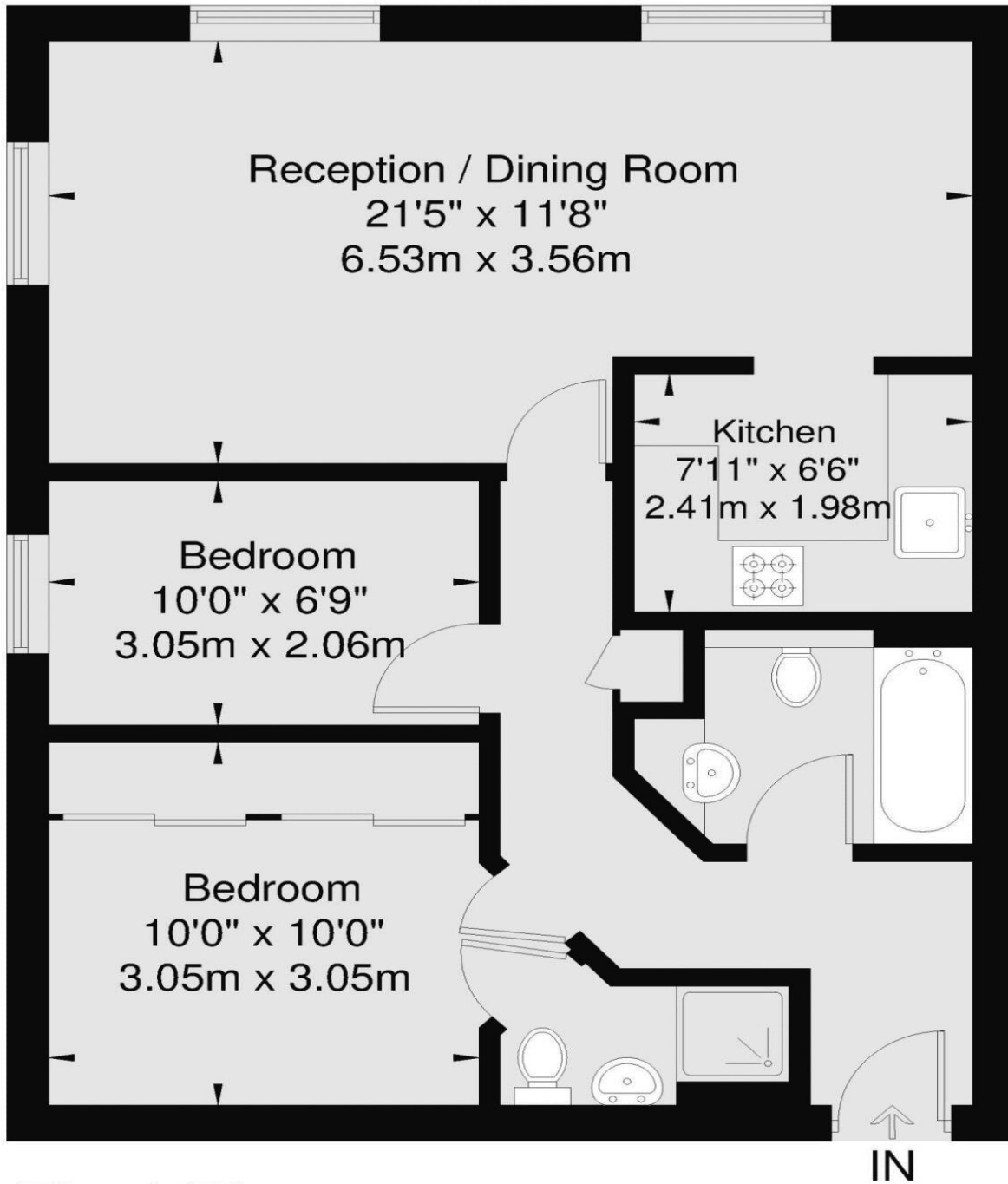


020 8544 2828  
Wimbledon: Wimbledon Park: Colliers Wood  
[www.SW19.com](http://www.SW19.com)  
SW19 Estate Agents Ltd. Is registered in England & Wales No. 05508737

*'it's all in the postcode...'*

# Burleigh Lodge

Approx Gross Internal Area  
First Floor = 58.6 Sq m / 630 Sq Ft



These particulars are for guidance only and should not be relied upon as a statement or representation of fact. All measurements given are approximate only and should not be relied upon for ordering carpets, equipment etc. Purchasers should satisfy themselves by inspection or otherwise as to the accuracy of the statements contained within. Neither SW19 estate agents ltd or related companies or their employees can confirm structural conditions of the property or that any appliances or other facilities are in working order. Purchasers are strongly recommended to arrange their own survey.

020 8544 2828

Wimbledon: Wimbledon Park: Colliers Wood

[www.SW19.com](http://www.SW19.com)

SW19 Estate Agents Ltd. Is registered in England & Wales No. 05508737

*'it's all in the postcode...'*