



Aspley Court, Warwick Avenue, Bedford, MK40 2UH

Welcome to

Aspley Court, Warwick Avenue, Bedford

William H Brown are pleased to introduce to the market this stunning ground floor two-bedroom retirement property in great condition located in central Bedford.

Lounge/Diner

19' 2" x 10' 4" (5.84m x 3.15m)

Double Glazed Door to Communal Garden, SOS Pull Cord, Electric Heater

Kitchen

7' 2" x 6' 9" (2.18m x 2.06m)

Electric Induction Hob, Wall and Base Units, Sink with Drainer

Bedroom One

18' 9" x 8' 6" (5.71m x 2.59m)

Double Glazed Window to Rear Aspect, SOS Pull Cord, Electric Heater, Fitted Wardrobe

Bedroom Two

11' 11" x 5' 11" (3.63m x 1.80m)

Double Glazed Window to Rear Aspect, SOD Pull Cord, Electric Heater

Bathroom

Heated Towel Rack, WC, Wash Hand Basin, SOS Pull Cord, Extractor Fan, Shower Cubicle (Fully Tiled)

Entrance Hall

SOS Pull Cord, Utility Cupboard

External

Communal Garden, Managed Parking Facilities





View this property online williamhbrown.co.uk/Property/BFD105523



Welcome to

Aspley Court Warwick Avenue, Bedford

- Great Location
- Over 60's Development
- Close to Local Amenities
- Central Location
- Direct Access to Communal Garden

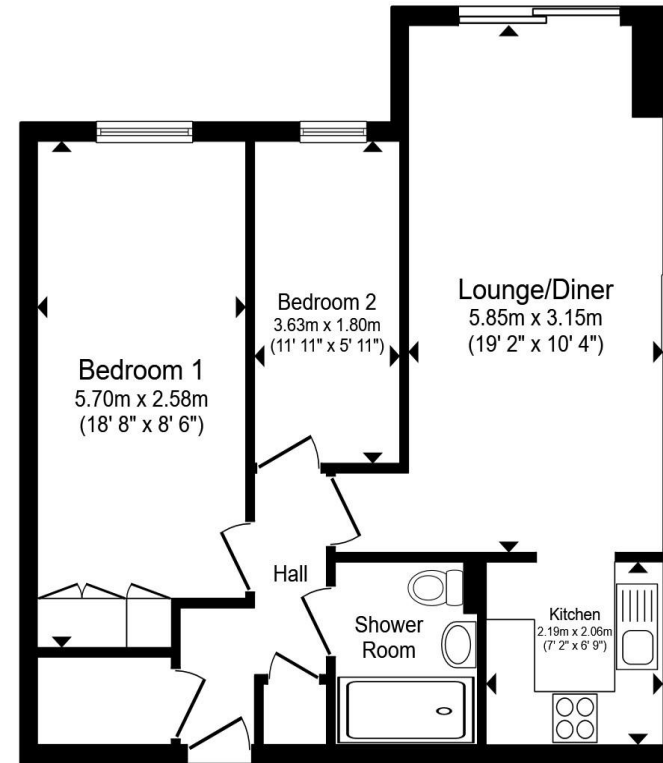
Tenure: Leasehold EPC Rating: D

Council Tax Band: B Service Charge: 3710.40

Ground Rent: 410.00

This is a Leasehold property with details as follows; Term of Lease 125 years from 01 Apr 1987. Should you require further information please contact the branch. Please Note additional fees could be incurred for items such as Leasehold packs.

£110,000



Total floor area 56.6 m² (610 sq.ft.) approx

This floor plan is for illustrative purposes only. It is not drawn to scale. Any measurements, floor areas (including any total floor area), openings and orientation are approximate. No details are guaranteed, they cannot be relied upon for any purpose and they do not form part of any agreement. No liability is taken for any error, omission or misstatement. A party must rely upon its own inspection(s). Powered by www.propertybox.io


william
h brown

View this property online williamhbrown.co.uk/Property/BFD105523



Property Ref:
BFD105523 - 0004

1. MONEY LAUNDERING REGULATIONS Intending purchasers will be asked to produce identification documentation at a later stage and we would ask for your co-operation in order that there is no delay in agreeing the sale. 2. These particulars do not constitute part or all an offer or contract. 3. The measurements indicated are supplied for guidance only and as such must be considered incorrect. Potential buyers are advised to recheck measurements before committing to any expense. 4. We have not tested any apparatus, equipment, fixtures or services and it is in the buyers' interest to check the working condition of any appliances. 5. Where an EPC, or a Home Report (Scotland only) is held for this property, it is available for inspection at the branch by appointment. If you require a printed version of a Home Report, you will need to pay a reasonable production charge reflecting printing and other costs. 6. We are not able to offer an opinion either written or verbal on the content of these reports and this must be obtained from your legal representative. 7. Whilst we take care in preparing these reports, a buyer should ensure that his/her legal representative confirms as soon as possible all matters relating to title including the extent and boundaries of the property and other important matters before exchange of contracts.

William H Brown is a trading name of Sequence (UK) Limited which is registered in England and Wales under company number 4268443, Registered Office is Cumbria House, 16-20 Hockliffe Street, Leighton Buzzard, Bedfordshire, LU7 1GN. VAT Registration Number is 500 2481 05.


william h brown



01234 268367



bedford@williamhbrown.co.uk



40 Allhallows, BEDFORD, Bedfordshire, MK40 1LN



williamhbrown.co.uk