

## Marine Street, SE16

£550,000

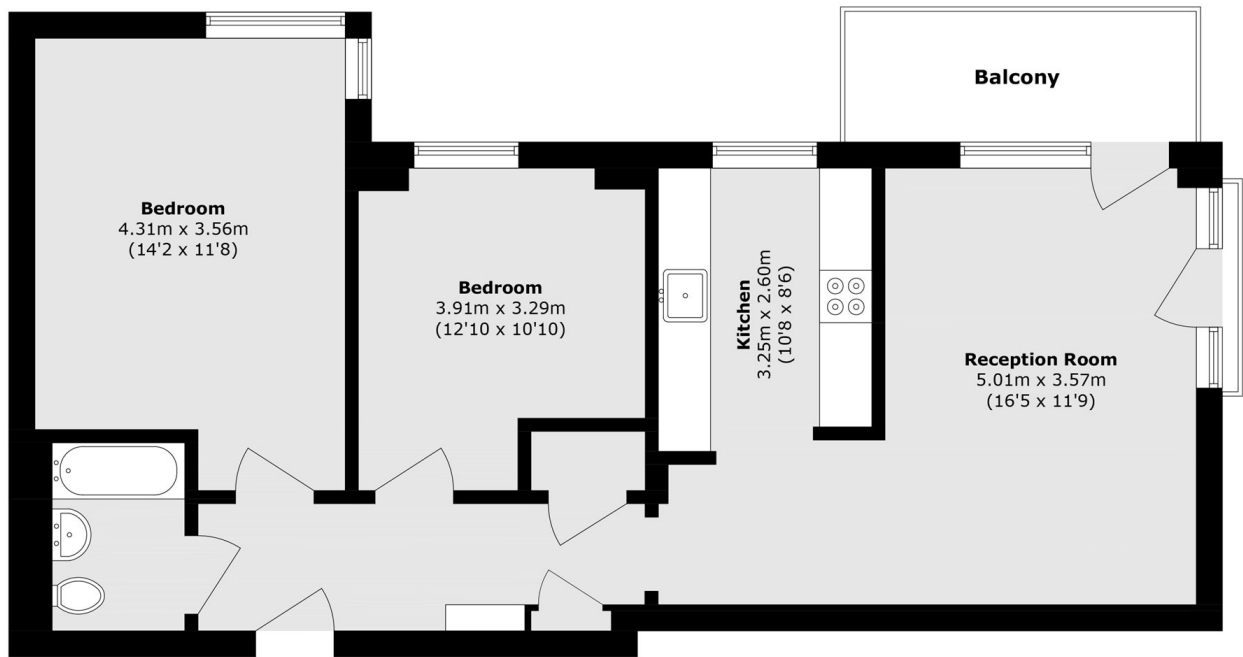
Offering views of Canary Wharf, this two double bedroom flat is offered in turn-key condition. Direct access to a private balcony as well as a communal roof terrace with views of major landmarks. Spacious living and dining space, separate kitchen with ample storage and workspace, modern bathroom and two double bedrooms.

Davoll Court is only 0.2 miles from Bermondsey station and 0.9 miles from London Bridge Station. Tower Bridge, Shad Thames, the Riverside, Borough Market, Bermondsey Street and Maltby Street Market are all also within easy reach.

### Features

- Two Double Bedrooms
- Private Balcony
- Fantastic Views
- Transport Links
- Excellent Condition
- Prime Location

# Marine Street, London, SE16



Total area (approx.): 74.0 sq. m (796.5 sq. ft)  
Balcony area (approx.): 6.0 sq. m (64.6 sq. ft)