

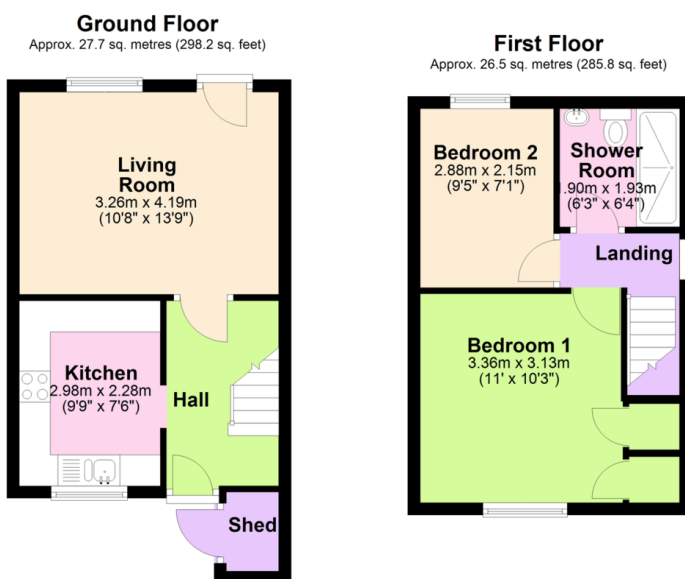


**18 Sherwill Close  
Ivybridge  
Devon  
PL21 9UW  
Guide Price £215,000**

  
MILLINGTON TUNNICLIFF

18 Sherwill Close  
Ivybridge  
Devon  
PL21 9UW

## FLOORPLAN



Total area: approx. 54.3 sq. metres (584.0 sq. feet)



2



1



1



B



C 69



584.0  
SQFT

## Guide Price £215,000

### SUMMARY

A modern 2 bedroom end terraced house tucked in at the top corner of this popular cul de sac on the western side of Ivybridge. Accommodation comprises an entrance hall, kitchen and living room on the ground floor, together with landing the 2 bedrooms and modern shower room/WC on the upper floor. The house is Upvc double glazed, gas centrally heated, has a super enclosed westerly facing rear garden and garage immediately opposite with drive. EPC C 69.

Popular Cul De Sac On Western Side Of Ivybridge | EPC C 69  
| Modern Shower Room/WC | Gas Central Heating | Upvc Double Glazing | Single Garage And Driveway Immediately Opposite | Westerly Facing Rear Garden | Corner Plot | Spacious Living Room | Modern 2 Bedroom End Terraced House

### CONTACT

19 Fore Street

Ivybridge

Devon

PL21 9AB

### EMAIL

[info@millingtontunnicliff.co.uk](mailto:info@millingtontunnicliff.co.uk)

### TEL

01752 896020

[www.millingtontunnicliff.co.uk](http://www.millingtontunnicliff.co.uk)