



Tyrisha Park Hill, offers in the region of £330,000

- Detached dormer bungalow
- Beautiful wrap around gardens
- Garage
- Off road parking
- Freehold
- EPC Rating: E



 3  1  1



About the property

Situated in the highly desirable Park Hill area of Tredegar, this attractive three-bedroom detached dormer bungalow offers generous living space, a versatile layout, and outstanding outdoor grounds.

Set on a substantial plot, the property boasts a large wrap-around garden with beautiful open views-ideal for those seeking privacy, space, and a scenic setting. The gardens are mainly laid to lawn with mature borders, providing excellent potential for outdoor entertaining or further landscaping.

Internally, the property features a bright and spacious living room, complemented by a separate dining area perfect for family life and entertaining. The well-sized kitchen offers ample storage and scope for modernisation. There are three good-sized bedrooms, offering flexible accommodation for families, guests, or home working.

Further benefits include a family bathroom, garage providing secure parking or workshop space, and additional driveway parking.

Located in one of Tredegar's most popular residential areas, the property enjoys a peaceful setting while remaining convenient for local amenities, schools, and transport links.

Offering excellent potential and a generous plot, this fantastic bungalow represents a rare opportunity in a prime location



Accommodation

Entrance Porch

10' 9" x 6' (3.28m x 1.83m)

Lounge

22' 10" x 13' max (6.96m x 3.96m max)

Kitchen

13' 5" x 9' 4" max (4.09m x 2.84m max)

Utility Room

12' x 9' 7" (3.66m x 2.92m)

Conservatory

13' 6" x 6' 9" (4.11m x 2.06m)

Bedroom One

13' 1" x 9' 5" into wardrobe (3.99m x 2.87m into wardrobe)

Bedroom Two

10' 2" x 9' 5" into wardrobe (3.10m x 2.87m into wardrobe)

Bedroom Three

9' 8" x 6' 11" (2.95m x 2.11m)

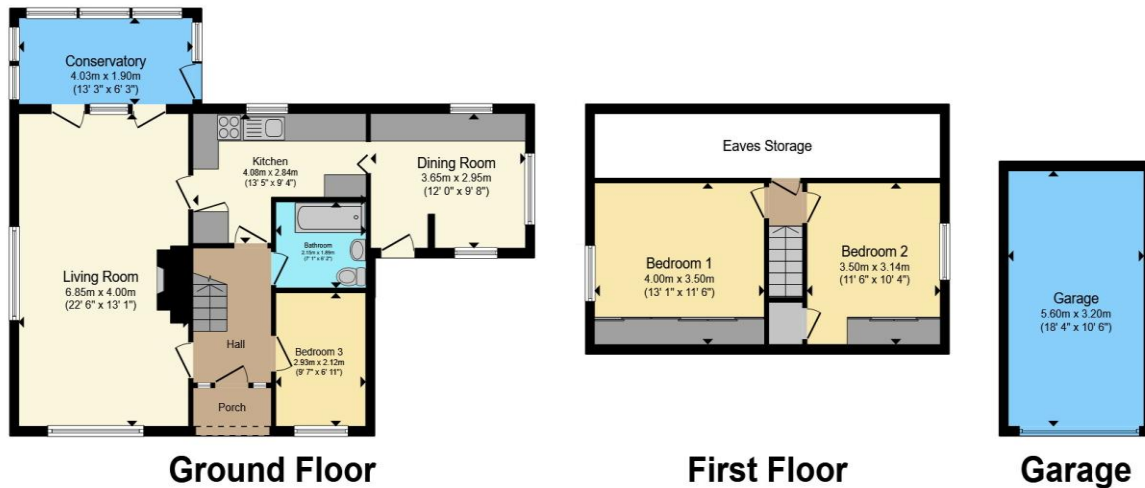
Bathroom

7' 2" x 6' 1" (2.18m x 1.85m)

01495360922

ebbwwale@peteralan.co.uk

Floorplan



Total floor area 123.2 m² (1,326 sq.ft.) approx

This floor plan is for illustrative purposes only. It is not drawn to scale. Any measurements, floor areas (including any total floor area), openings and orientation are approximate. No details are guaranteed, they cannot be relied upon for any purpose and they do not form part of any agreement. No liability is taken for any error, omission or misstatement. A party must rely upon its own inspection(s). Powered by www.propertybox.io



Important Information

Note while we endeavour to make our sales details accurate and reliable, if there is any point which is of particular interest to you, please contact the office and we will be pleased to confirm the position for you. We have not personally tested any apparatus, equipment, fixtures, fittings or services and cannot verify they are in working order or fit for their purposes. Nothing in these particulars is intended to indicate that carpets or curtains, furnishings or fittings, electrical goods (whether wired or not). Gas fires or light fittings or any other fixtures not expressly included form part of the property offered for sale. This computer generated Floorplan, if applicable, is intended as a general guide to the layout and design of the property. It is not to scale and should not be relied upon for dimensions. Tenure: We cannot confirm the tenure of the property as we have not had access to the legal documents. The buyer is advised to obtain verification from their solicitor or surveyor.

Peter Alan Limited is registered in England and Wales under company number 2073153, Registered Office is Cumbria House, 16-20 Hockliffe Street, Leighton Buzzard, Bedfordshire, LU7 1GN. VAT Registration Number is 500 2481 05. For activities relating to regulated mortgages and non-investment insurance contracts, Peter Alan Limited is an appointed representative of Connells Limited which is authorised and regulated by the Financial Conduct Authority. Connells Limited's Financial Services Register number is 302221. Most buy-to-let

