



Elgin Crescent, W11

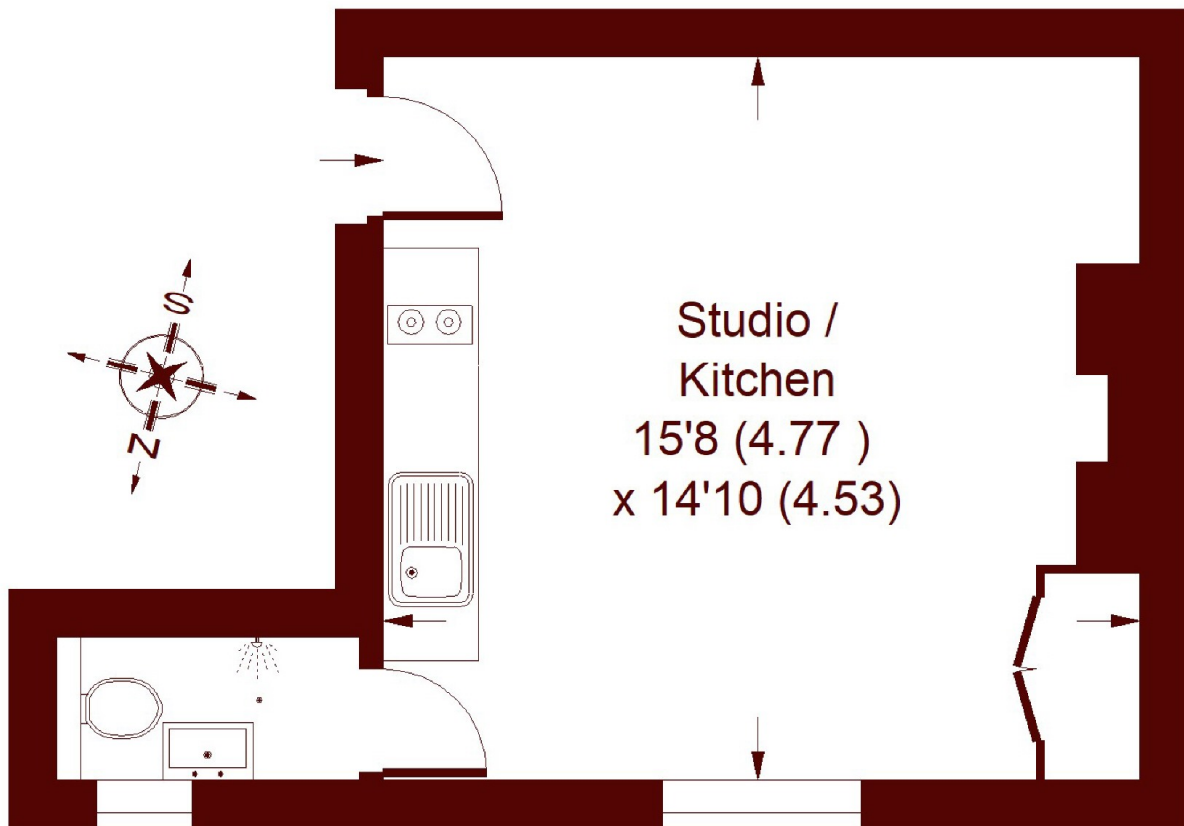
£300,000



- Lovely building
- Large windows
- Just off Kensington Park Road
- High ceilings
- Quiet Position
- Prime Notting Hill

Elgin Crescent, W11

APPROX. GROSS INTERNAL FLOOR AREA
253 SQFT / 23.5 SQM



FIRST FLOOR

Whilst every attempt has been made to ensure the accuracy of the floor plan, measurements are approximate and not to scale.
No guarantee is given on the total square footage of the property quoted on the plan. Figures given are for guidance.
Plan is for illustration purposes only, not to be used for valuations.

Marsh & Parsons Notting Hill

2-6 Kensington Park Road,
London, W11 3BU
020 7313 2890