

# SPURREY

A striking family home, with an impressive double-width balcony, the Spurrey is an impressive four-bedroom, two-storey property.

131 sq m (1,410 sq ft)

CHILMINGTON  
RISE  
KENT

ASHFORD KENT TN23 3DN

[www.chilmington-rise.co.uk](http://www.chilmington-rise.co.uk)

Connells

# SPURREY

A striking family home, with an impressive double-width balcony, the Spurrey is an impressive four-bedroom, two-storey property.

Allocation of garages, carports and off-road parking differs from plot to plot. For more information, please speak to the sales team.

**131 sq m (1,410 sq ft)**

The ground floor features a family/dining room next to a living room. The dividing 'wall' can be opened up to create a huge space. The two pairs of double doors can then open out to the patio and garden making it perfect for partying and entertaining. One of the four bedrooms on the first floor benefits from an en-suite bathroom.

## GROUND FLOOR

### Living Room

6.24m max x 3.11m 20'6" max x 10'2"

### Family / Dining Area

6.23m x 2.83m 20'5" x 9'3"

### Kitchen

3.62m x 3.40m 11'11" x 11'2"

### Utility

1.77m x 1.76m 5'9" x 5'9"

## FIRST FLOOR

### Master Bedroom with en-suite

3.32m x 3.20m 10'11" x 10'6"

### Bedroom 2

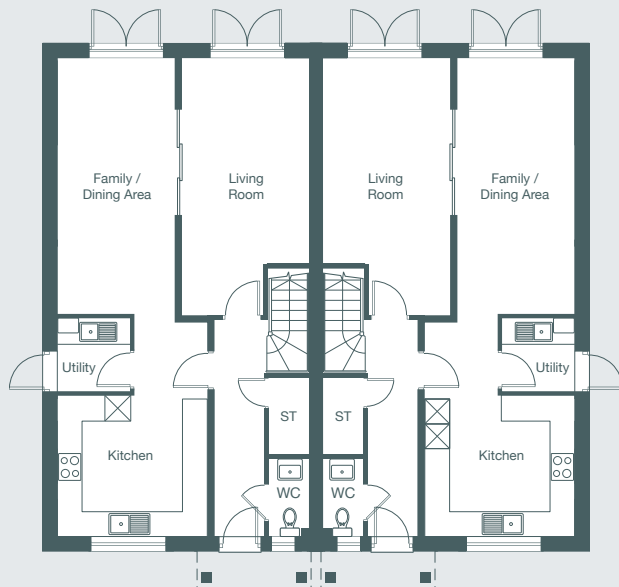
4.16m x 2.97m 13'8" x 9'9"

### Bedroom 3

3.06m x 3.03m max 10'1" x 9'11" max

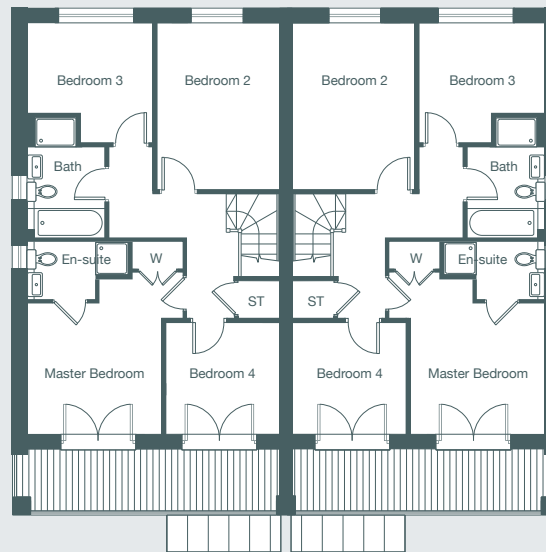
### Bedroom 4

2.78m x 2.71m 9'2" x 8'11"



Ground Floor Plan Left

Ground Floor Plan Right



First Floor Plan Left

First Floor Plan Right

Each set of floor plans may be reproduced at a different scale to others within the brochure. Floor plans, dimensions and CGI illustrations are indicative only and can be liable to change during construction. Please check with the sales agent if you require further information.

**Connells**

**Sales Suite**

Open Daily

Monday to Sunday 10am-5pm

**Telephone**

01233 622 206

01233 502 020

**SPURREY**

Plots 68, 69.