



Northfield Gardens, Wymondham - NR18 0DG

**STARKINGS
&
WATSON**

HYBRID ESTATE AGENTS



Northfield Gardens

Wymondham

This beautifully presented SEMI-DETACHED HOUSE is ideally situated within WALKING DISTANCE OF THE TOWN CENTRE, offering both convenience and a peaceful residential setting. Step inside to discover a spacious, OPEN PLAN LIVING SPACE that is tastefully decorated and flooded with natural light, providing a warm and inviting atmosphere for family life or entertaining guests. The MODERN KITCHEN, installed circa 2024, features sleek cabinetry, contemporary fittings, and quality appliances. To the rear of the home, off from the kitchen, a bright CONSERVATORY (added in 2025), creates an additional, versatile living space perfect for relaxing or hosting gatherings. Upstairs, you will find THREE WELL-PROPORTIONED BEDROOMS, with the MAIN BEDROOM benefiting from an EN-SUITE WC for added comfort and privacy. The property also boasts a LUXURIOUS MODERN BATHROOM updated in 2024, and multiple upgraded features throughout, including a new fuse board, radiators, and plumbing, ensuring peace of mind and efficient living. The rear garden is FULLY ENCLOSED with the addition of a timber WORKSHOP and GATED ACCESS to



further parking to the side of the home with a
LARGE DRIVEWAY to the very front giving ample
OFF ROAD PARKING.

Council Tax band: B

Tenure: Freehold

EPC Energy Efficiency Rating: D

- Semi-Detached House Within Walking Distance
Of Town Centre
- Multiple Upgraded Features Including Fuse
Board, Radiators & Plumbing
- Open Plan Living Space, Tastefully Decorated &
Well-Lit
- Modern Kitchen & Bathroom Added Circa 2024
- Conservatory Added In 2025 Adding Further
Living Space To The Ground Floor
- Three Bedrooms With The Main Bedroom
Offering An En-Suite WC
- Private Rear Garden With Separate Workshop
- Large Driveway Giving Parking For Multiple
Vehicles & Gated Access To The Rear Garden

The property is located in the market town of
Wymondham, and within close proximity to a very
good range of everyday amenities including
shops, leisure centre and doctors surgery.
Situated approximately 10 miles south west of
Norwich, fantastic access leads to the A11.



The town also has a train station with Norwich to Cambridge railway lines. Excellent schooling can be found at Wymondham College & Wymondham High School, both are highly thought of within the area.

SETTING THE SCENE

The property is set back from the street where tall mature shrubbery opens up to reveal a large brickweave driveway suitable for the parking of multiple vehicles. Further parking can be accessed to the side of the home with lockable swinging gate access providing further space leading into the rear garden.

THE GRAND TOUR

Once inside, a central lobby is the first place to greet you, creating the ideal space to slip off coats and shoes with stairs found directly ahead and living spaces for the ground floor to your right. The current owners have carried out a multitude of upgrades within the home including making the ground floor accommodation open plan. Courtesy of its design, the space remains incredibly well lit with fully replastered and redecorated walls and ceilings. The flooring to the front of the home opens up to leave space for a formal dining table with larger space sat just beyond, creating the ideal area for a sitting room suite. The property boasts handy under the stair storage with an added storage spaces fitting within the recesses either side to the fireplaces.

The kitchen, much like most of the interior of the home, has also undergone a full upgrade circa 2024. With engineered oak flooring, the space now features a mixture of wall and base mounted cabinetry set around solid wooden work surfaces with integrated appliances to include dual eye level ovens, hob with extraction above, dishwasher and fridge/freezer sat just beyond the kitchen. At the very rear of the home, a contemporary bathroom suite features a fully tiled surround with a rainfall shower head and glass screen mounted over the bath and ample vanity storage just off to the side of the property.

A recent extension in 2025 takes you into a large conservatory space with a continuation of the same kitchen cabinetry and worktops. Here an integrated washer/dryer adds convenience with open flooring making the space a versatile living area.

The first floor landing grants access into each of the three bedrooms with the larger room coming towards the very front of the property kept incredibly well lit courtesy of large uPVC double glazed windows with a tasteful yet neutral décor. Within the over the stairs storage cupboard the current owners have had it a ensuite WC for further modern convenience in the form of a macerator toilet. Towards the rear of the property two further bedrooms are on offer with the larger double bedroom sat to the right hand side, each of which sharing views over into the rear garden and set upon carpeted flooring.

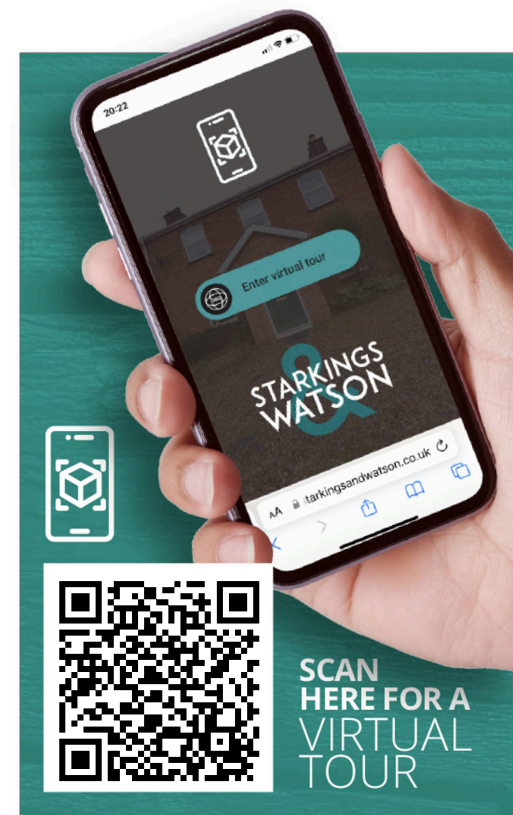
FIND US

Postcode : NR18 0DG

What3Words : ///polo.conductor.refrained

VIRTUAL TOUR

View our virtual tour for a full 360 degree of the interior of the property.



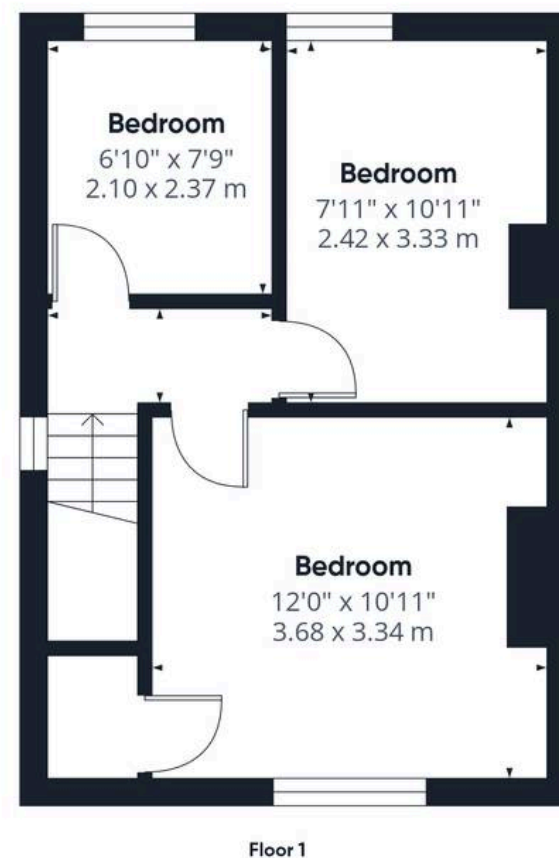
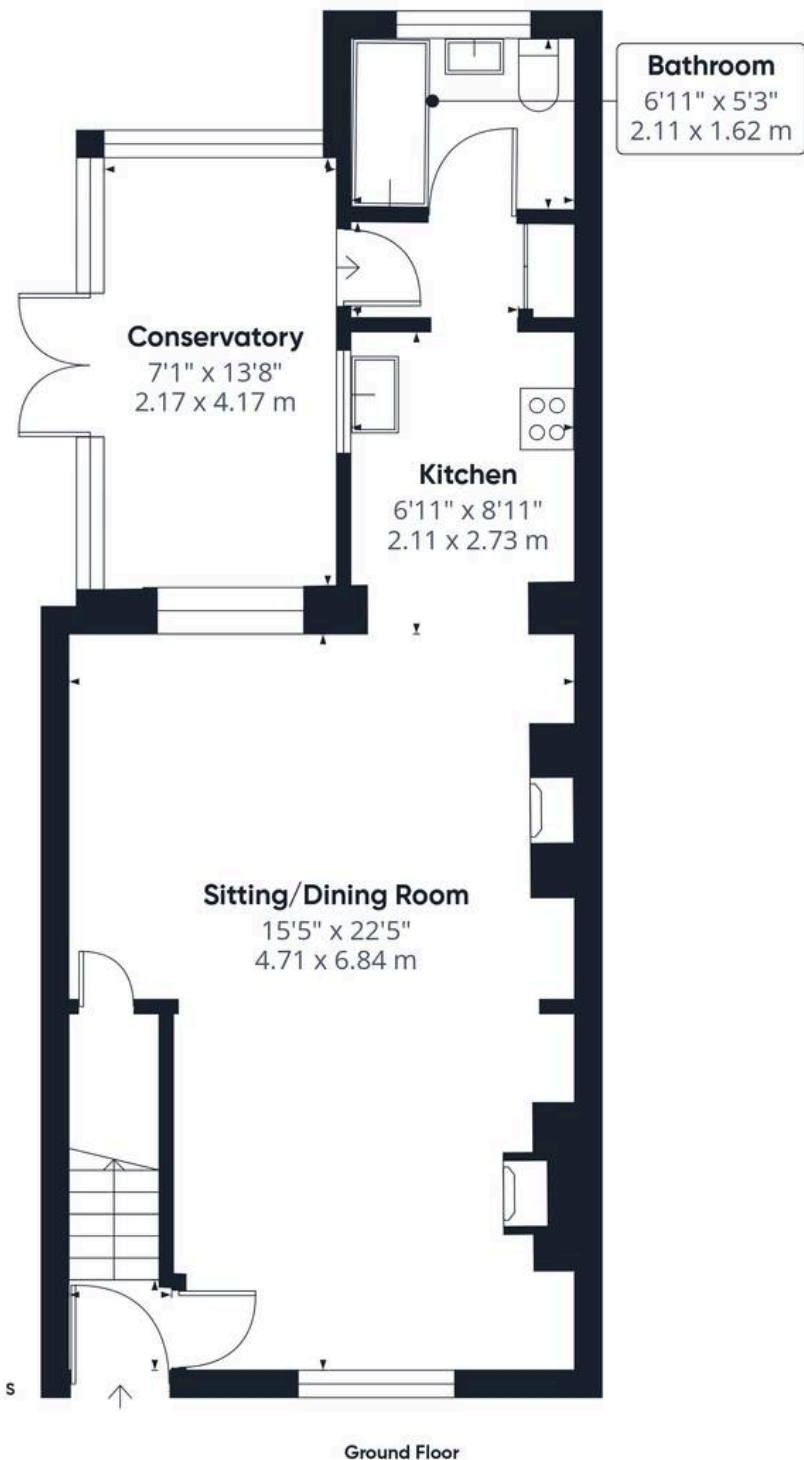




THE GREAT OUTDOORS

The rear garden is fully enclosed to both sides and the very rear with timber panel fencing of which two have been newly erected where a mixture of open lawn space, raised patio seating area and colourful planting beds culminate to create a inviting space to enjoy the warmer months with a bespoke workshop and garage space, benefiting from its own power supply and further timber storage space sat just behind.





Approximate total area⁽¹⁾

853 ft²
79.3 m²

(1) Excluding balconies and terraces

Calculations reference the RICS IPMS 3C standard. Measurements are approximate and not to scale. This floor plan is intended for illustration only.

GIRAFFE360



Starkings & Watson Hybrid Estate Agents

46 Back Lane, Wymondham - NR18 0LB

01953 438838 • wymondham@starkingsandwatson.co.uk • starkingsandwatson.co.uk

Disclaimer: Whilst every care has been taken to prepare these sales particulars, they are for guidance purposes only. All measurements are approximate and are for general guidance purposes only and whilst every care has been taken to ensure their accuracy, they should not be relied upon and potential buyers are advised to recheck the measurements.