

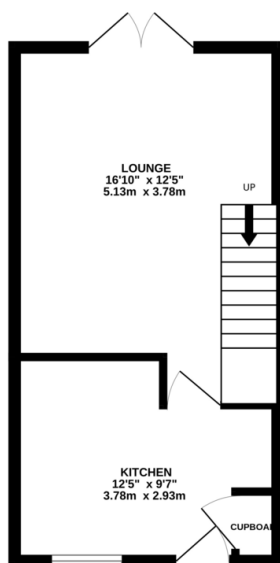


# Property Summary

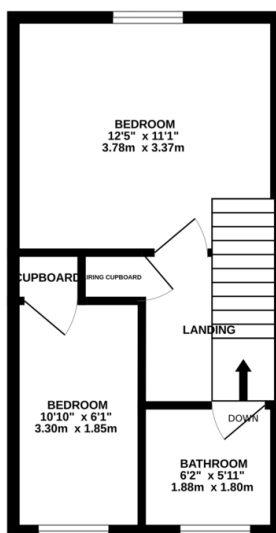
Two bedroom mid town house available to let on Harrogate Way in Wigston. Offered unfurnished and the property comprises kitchen, spacious living room on the ground floor together with two bedrooms and bathroom upstairs. The property has been well maintained throughout and benefits from a quiet garden to the rear and being situated at the head of a quiet cul de sac.



GROUND FLOOR  
300 sq.ft. (27.8 sq.m.) approx.

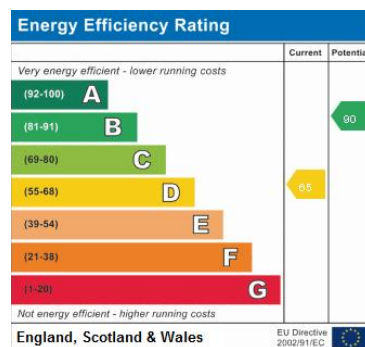


1ST FLOOR  
300 sq.ft. (27.8 sq.m.) approx.



TOTAL FLOOR AREA: 599 sq.ft. (55.7 sq.m.) approx.

Whilst every attempt has been made to ensure the accuracy of the floorplan contained here, measurements of doors, windows, rooms and any other items are approximate and no responsibility is taken for any error, omission or mis-statement. This plan is for illustrative purposes only and should be used as such by any prospective purchaser. The services, systems and appliances shown have not been tested and no guarantee as to their operability or efficiency can be given.  
Made with Metropix 02/23



- Two Bedrooms
- Mid Terrace
- Offered Unfurnished
- Recently Redecorated
- Bathroom Upstairs
- Cul De Sac Location
- Well Maintained
- Off Road Parking

phillips george | sales & lettings

Agents Note: Whilst every care has been taken to prepare these sales particulars, they are for guidance purposes only. All measurements are approximate and for general guidance purposes only and whilst every care has been taken to ensure their accuracy, they should not be relied upon and potential buyers are advised to recheck the measurements

🏠 46 Long Street, Wigston, Leicestershire, LE18 2AH

✉ info@phillipsgeorge.co.uk  
☎ 0116 216 8178

