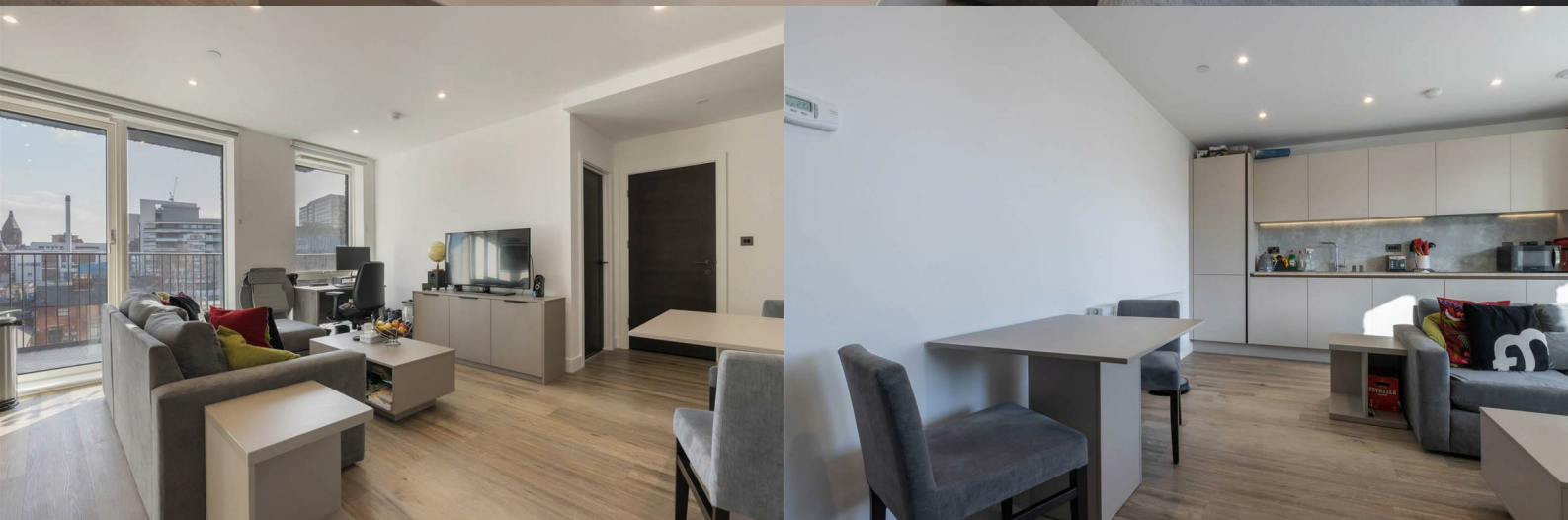




**RENT
ME**



The Lancaster, B4 6LP

CITY CORE

£1,450 PCM

available from 9th February 2026

- Two Double Bedrooms
- Fully integrated kitchen
- Outside space - private balcony & shared gardens
- Resident facilities, including the resident's lounge, podium gardens, gym, sauna, steam room, meeting room and cinema room
- Central Location
- Two Bathrooms - one en-suite
- Light and spacious living area
- 24 hour concierge
- Close to transport links
- Managed by FleetMine



fleetmilne.co.uk

0121 366 0456

FleetMilne