



**Guide Price**  
**£300,000**

**Freehold**

3x  1x  1x 

**Northumberland  
Avenue, Kennington,  
Ashford, Kent, TN24**

**OVER 60?**

Secure this property  
for up to **59% less!**

*Wards*  
Helping you move forwards



## Main features

- Sought after location
- Wet room
- Larger than average rear garden
- Garage and driveway
- No forward chain

## Accommodation

### GROUND FLOOR

- Entrance Hall
- Bedroom 1 : 13'9 x 10'2 (4.19m x 3.10m)
- Wet Room
- Lounge/Diner: 24'8 x 11'9 (7.52m x 3.58m)
- Kitchen: 10'2 x 6'8 (3.10m x 2.03m)
- Bedroom 3 : 9'5 x 6'5 (2.87m x 1.96m)
- Bedroom 2 : 12'9 x 8'8 (3.89m x 2.64m)

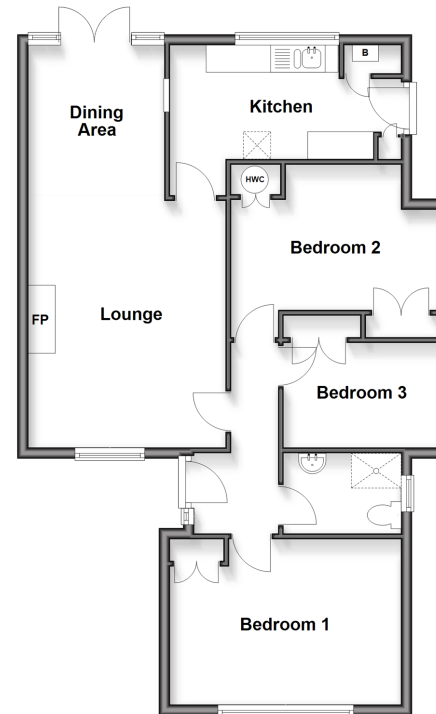
### OUTBUILDING

Garage

### OUTSIDE

Front and Rear Gardens  
Driveway

**Ground Floor**  
Approx. 73.3 sq. metres (789.0 sq. feet)



**Outbuilding**  
Approx. 13.3 sq. metres (142.9 sq. feet)



Call Ashford - 01233 639531 ■ [wardsforkent.co.uk](http://wardsforkent.co.uk)

■ Through a Homewise Home For Life Plan people aged 60+ can secure this property for up to 59% less, by purchasing a Lifetime Lease



12242997/20260402/TT/JRB