



The Drive, SW20

£795,000



- Top floor Victorian flat
- Over 1,400 sq.ft
- Three bedrooms
- Kitchen / dining room
- Large communal garden
- Sought after location



ABOUT THE PROPERTY

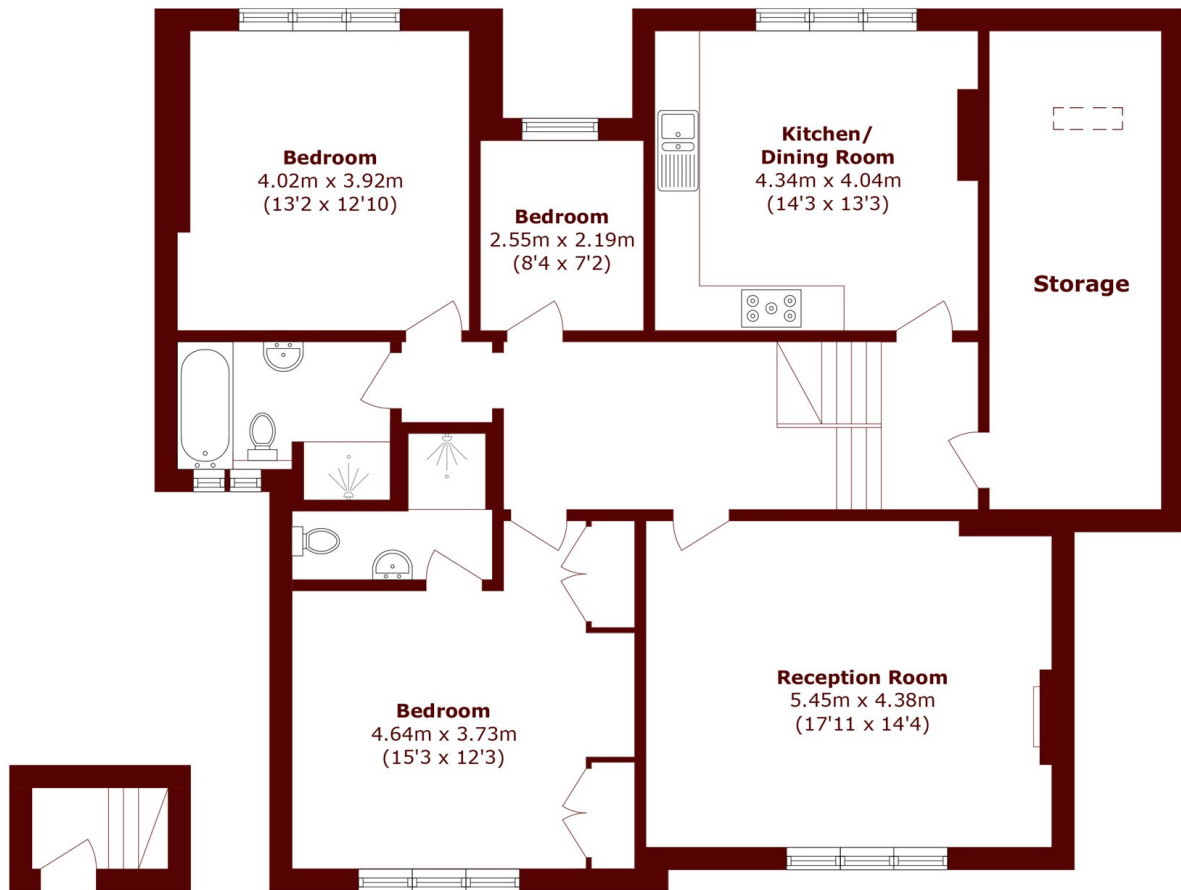
This beautifully designed, three bedroom flat of 1,400 sq.ft occupies the entire top floor of a substantial Victorian house. It has impressive proportions, a delightful communal rear garden and is located on one of the areas most sought after roads, close to the open spaces of Wimbledon Common.

The accommodation is neutrally decorated throughout and is arranged around a wide and inviting split-level entrance hall providing excellent eaves storage. The rear reception room overlooks the beautiful communal gardens and receives plenty of natural light whilst the kitchen/ dining room is fitted with white modern units, fully integrated appliances and has plenty of space for a dining table.

The main bedroom at the rear has an en suite shower room and large built-in wardrobes with a second double and large single bedroom well served by a family bathroom/WC with separate shower cubical.

Located at the top of Copse Hill, with the open spaces of Wimbledon Common and Wimbledon Village less than 0.5 miles away. There are good transport links at Raynes Park and Wimbledon stations. Wimbledon town centre is within easy reach and offer an array of shops, bars, restaurants and leisure facilities.





First Floor

Second Floor

Total area (approx.): 130.1 sq. m (1400.3 sq. ft)

Marsh & Parsons Wimbledon

24 High Street, Wimbledon
Village, SW19 5DX
020 8879 6660

We aim to make our particulars both accurate and reliable. However, they are not guaranteed; nor do they form part of an offer or contract. If you require clarification on any points then please contact us, especially if you're traveling some distance to view. Please note that appliances and heating systems have not been tested and therefore no warranties can be given as to their good working order.