

Sinclair



8 The Limes, Ravenstone

Offers Over £300,000

8 The Limes

Ravenstone

THIS RENOVATED THREE BEDROOM DETACHED BUNGALOW occupying a sought after location within the popular commuter village of Ravenstone comes to the market after having been modernised throughout. Boasting 2025 fitted boiler and 2026 fitted windows and doors, the property offers a detached garage, landscaped garden, modern kitchen, three bedrooms, shower room and lounge. Early viewings come highly advised in order to avoid disappointment.

Council Tax band: C

Tenure: Freehold

EPC Energy Efficiency Rating: D

EPC Environmental Impact Rating: C

- Three Bedrooms
- Detached Bungalow
- Detached Garage
- Modern Throughout
- Wow Factor
- Oak internal doors



GROUND FLOOR

Entrance Hall

Entered via a composite front door with inset opaque double glazed panel and comprising solid oak flooring with an oak glazed internal door accessing the lounge.

Lounge

15' 8" x 11' 1" (4.78m x 3.38m)

Having uPVC double glazed window to front, electric effect cast iron log burner atop a polished quartz hearth with floating oak mantle above.

Inner Hall

Having a solid oak flooring and providing access to the loft, which in turn enjoys a pull down ladder and is partly boarded.

Howdens Kitchen/Diner

14' 8" x 10' 3" (4.47m x 3.12m)

Inclusive of a modern range of wall and base units with solid quartz work surfaces, an integrated fridge/freezer, electric oven with further microwave oven, five ring induction hob with splash screen over and low profile extractor hood over a plinth heater. Also featuring a fitted washing machine and dishwasher respectively. Other benefits include a concealed gas fired central heating boiler, a sink and drainer unit with swan neck mixer tap and having tiling to splash prone areas, porcelain tiled flooring, uPVC double glazed window to front and an opaque uPVC door accessing the driveway.

Shower Room

8' 5" x 6' 3" (2.57m x 1.91m)

This three piece suite comprises a low level w.c, vanity wash hand basin, double walk in shower enclosure with waterfall style power shower and featuring a mirror fronted heated LED inset vanity cabinet with internal shaver point. Also having an airing cupboard, heated towel rail, part tiled walls, tile effect cushion flooring and an opaque uPVC double glazed window to rear.



Bedroom One

12' 2" x 9' 9" (3.71m x 2.97m)

Having mirror fronted sliding double wardrobe and uPVC double glazed window to rear.

Bedroom Two

10' 3" x 11' 6" (3.12m x 3.51m)

Having uPVC doubled glazed window to rear and mirror fronted double fitted sliding wardrobe.

Bedroom Three

7' 7" x 6' 7" (2.31m x 2.01m)

Having uPVC double glazed window to side.

Rear Garden

Accessible via the tandem tarmacadam driveway, the private rear garden enjoys a paved patio area with stone shingled edging giving way to a well maintained lawn, surrounded by shrubs and timber close board fence panelling.

Front Garden

A well maintained lawn facilitated by a waterpoint and giving way to the front door beneath the canopy porch.

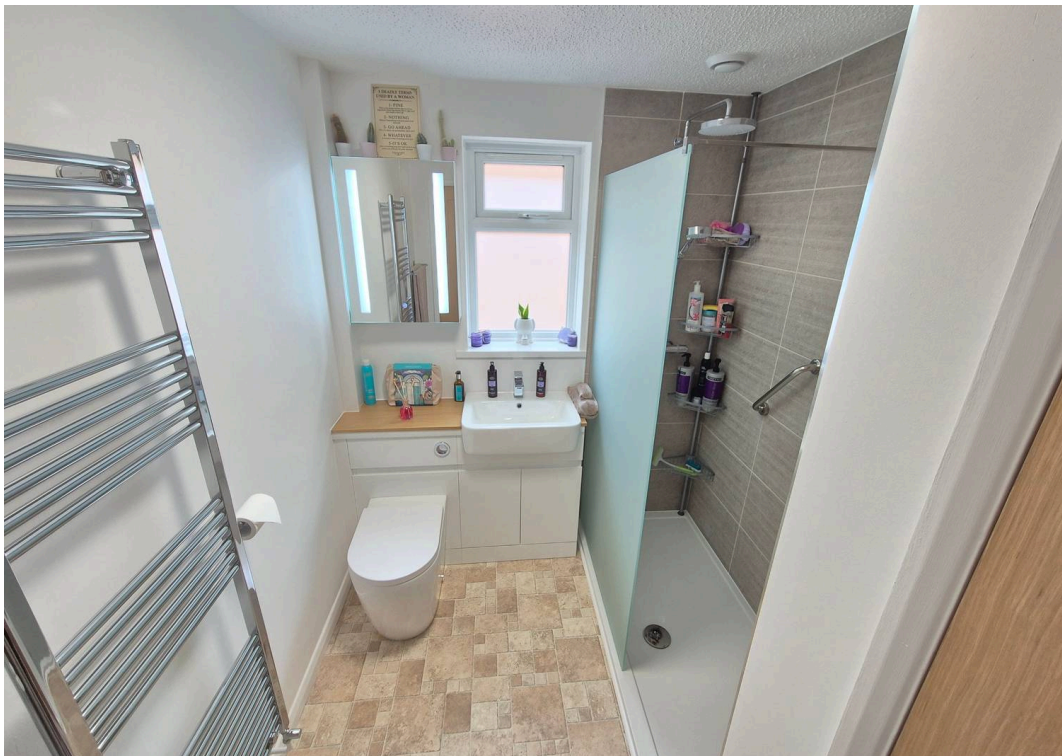
Garage

Entered via an up and over front door and benefiting from both light and power.

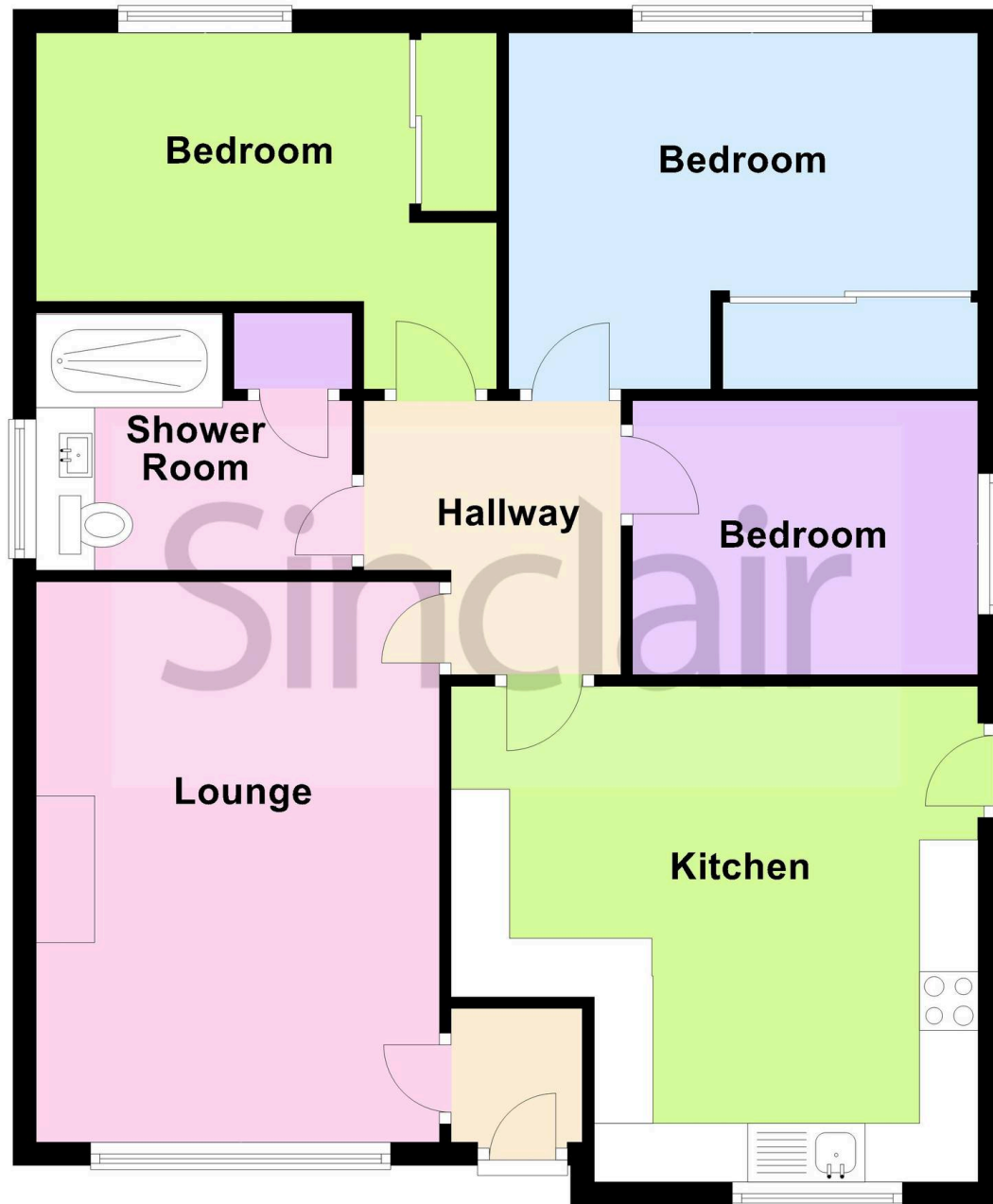
Driveway

A tarmacadam driveway offers off road parking for multiple vehicles. The driveway also accesses the detached garage via a raw iron gate.





Ground Floor





Sinclair Estate Agents

Sinclair Estate Agents, 3 Belvoir Road, Coalville – LE67 3PD

01530 838338

coalville@sinclairestateagents.co.uk

www.sinclairestateagents.co.uk/#/

Digital Markets Competition & Consumers Act 2024 (DMCC ACT) – The DMCC Act which came into force in April 2025 is designed to ensure that consumers are treated fairly and have all the necessary information required to make an informed purchase. Sinclair are committed to providing material information relating to the properties we market to assist prospective buyers when making a decision to proceed with a property purchase. It should be noted that all information will need to be verified by the buyers solicitors and is given in good faith from information obtained by sources including but not restricted to HMRC Land Registry, Spectre, Gov.uk and information provided and verified by our vendors.