



Blenheim House

Crown Square, SE1

£19,500 per month
(£4,500 per week)

A truly luxurious four bedroom, four en-suite fourth floor apartment with fabulous views of Tower Bridge and the River Thames. One Tower Bridge benefits from 24hr concierge, leisure facilities, parking, pool, gym, sauna, spa, and underground parking.

CHESTERTONS



Blenheim House

Crown Square, SE1

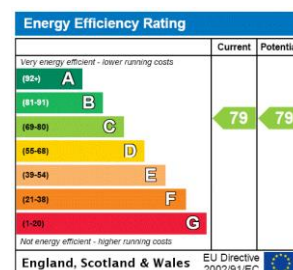
- Four bedroom
- Four ensuite
- Fourth floor
- 24 hr concierge and security
- Pool, Spa, Gym, Virtual golf range
- Allocated parking space



A rare opportunity to own a truly luxurious four bedroom, four en-suite apartment with some of the most iconic and amazing views in London. This fourth floor apartment has an incredibly high specification finish with marble and patterned wooden flooring throughout the property. The master bedroom is spacious and bright with uninterrupted views towards Tower Bridge. The en-suite bath is a piece of art in itself made from walnut and with the flick of a switch the frosted glass partition clears with the views of Tower Bridge and the River Thames opening up.

There are three other bedrooms all with en-suite bathrooms, built in wardrobes and one of the bedrooms has a balcony at the rear. The

Minimum Term: 12 months
Deposit Required: £27,000
Local Authority: TBC
Council Tax Band: TBC
EPC Rating: C

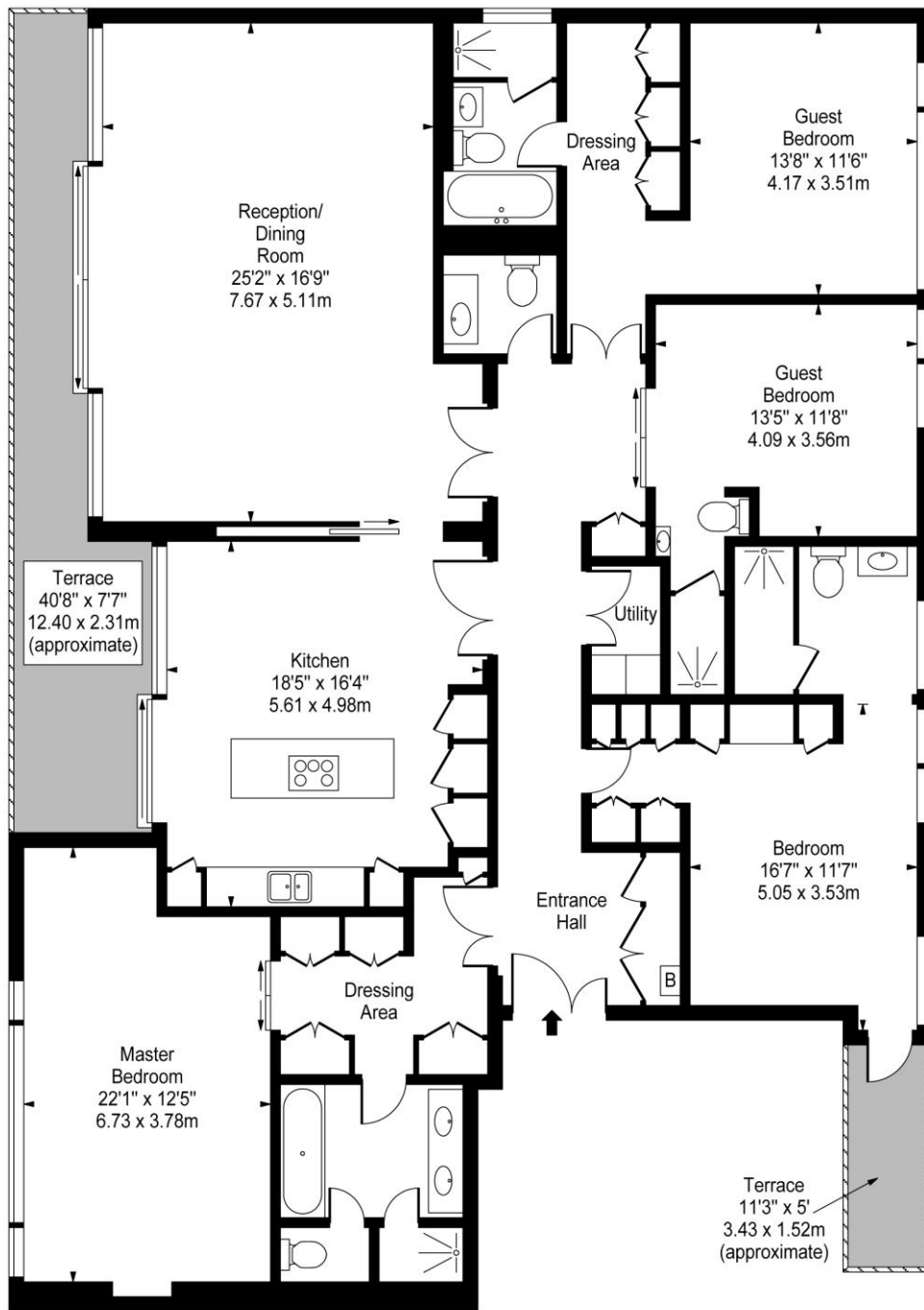
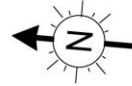


Chestertons Tower Bridge Lettings

220 Tower Bridge Road
 Tower Bridge
 London
 SE1 2UP
 towerbridgelettingsusers@chestertons.co.uk
 02073576911
 chestertons.co.uk

Additional tenant charges apply (fees apply to non-AST tenancies only)
 Tenancy Agreement Fee: £300
 References per Tenant/Guarantor: £60
 Inventory check (approx. £100 – £250 inc. VAT)
 chestertons.co.uk/property-to-rent/applicable-fees

Blenheim House, SE1



Fourth Floor

Approx Gross Internal Area **2354 Sq Ft - 218.69 Sq M**

For Illustration Purposes Only - Not To Scale
www.goldlens.co.uk
 Ref. No. 006317K

