



Croft Gardens, W7

£623 Per week

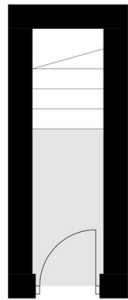
A spacious three-bedroom unfurnished maisonette, newly refurbished throughout, featuring two modern bathrooms and a stylish kitchen with modern appliances.

Ideally located for excellent transport links including the Elizabeth Line (Hanwell station) providing unrivalled access to Central London as well as the benefit of Northfields & Boston Manor stations (Piccadilly). Local parks include Elthorne, Lammas & Walpole.

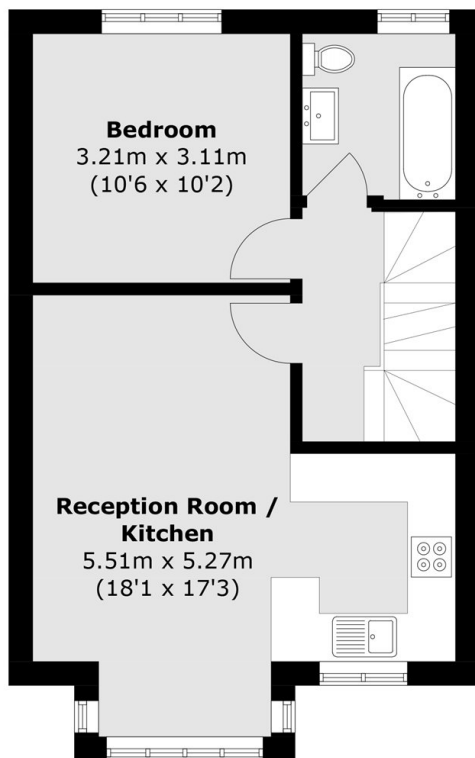
Features

- Three Bedrooms
- Two Bathrooms
- Maisonette
- Newly Refurbished
- Modern Appliances
- Unfurnished

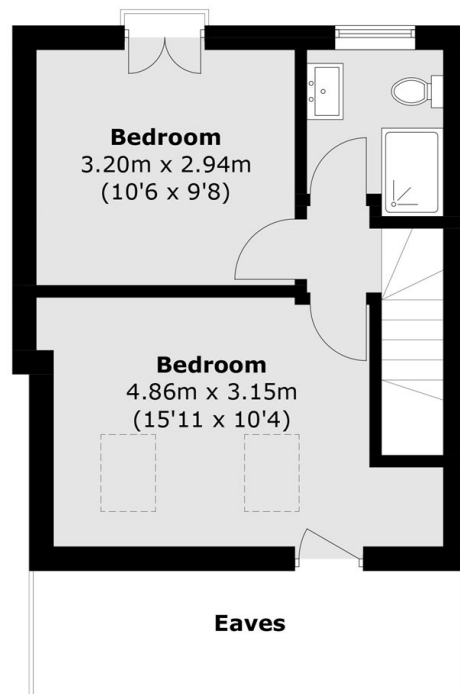
Croft Gardens, London, W7



Ground Floor



First Floor



Second Floor

Total area (approx.): 77.3 sq. m (831.9 sq. ft)
(Excluding Eaves)

Dexters

Northfields
140 Northfield Avenue
London
W13 9SB
Lettings
020 8545 8589

Energy Rating: B. We aim to make our particulars both accurate and reliable. However they are not guaranteed; nor do they form part of an offer or contract. If you require clarification on any points then please contact us, especially if you're traveling some distance to view. Please note that appliances and heating systems have not been tested and therefore no warranties can be given as to their good working order.

 **RICS** | Regulated
Estate Agent
and Letting Agent

[dexters.co.uk](https://www.dexters.co.uk)