

For Sale



LCP/PrivateOffice  
est.1990

Rutherford Street, Westminster, SW1P

+44 (0) 207 723 1733 / sales@lcpprivate.com

ASKING PRICE: £499,999 STC



# Rutherford Street, Westminster, SW1P

£510,000

This second floor, one bedroom flat, located in a purpose-built block on Rutherford Street, SW1, would make the perfect first home or a great rental investment.

The property is light and bright throughout and comprises of a spacious double bedroom, well equipped separate kitchen, bathroom with shower over bath and a large living room.

Transport links can be found via Victoria Station (0.5 miles) where there is a plethora of options, including Coach, Underground, Overground and Bus's. Pimlico Station is also a short walk away (Victoria Line, 0.4miles).

**Asking Price:** £499,999

**Lease:** Share of Freehold

**Council Tax:** Band D

**Service Charge:** £3,000 per annum

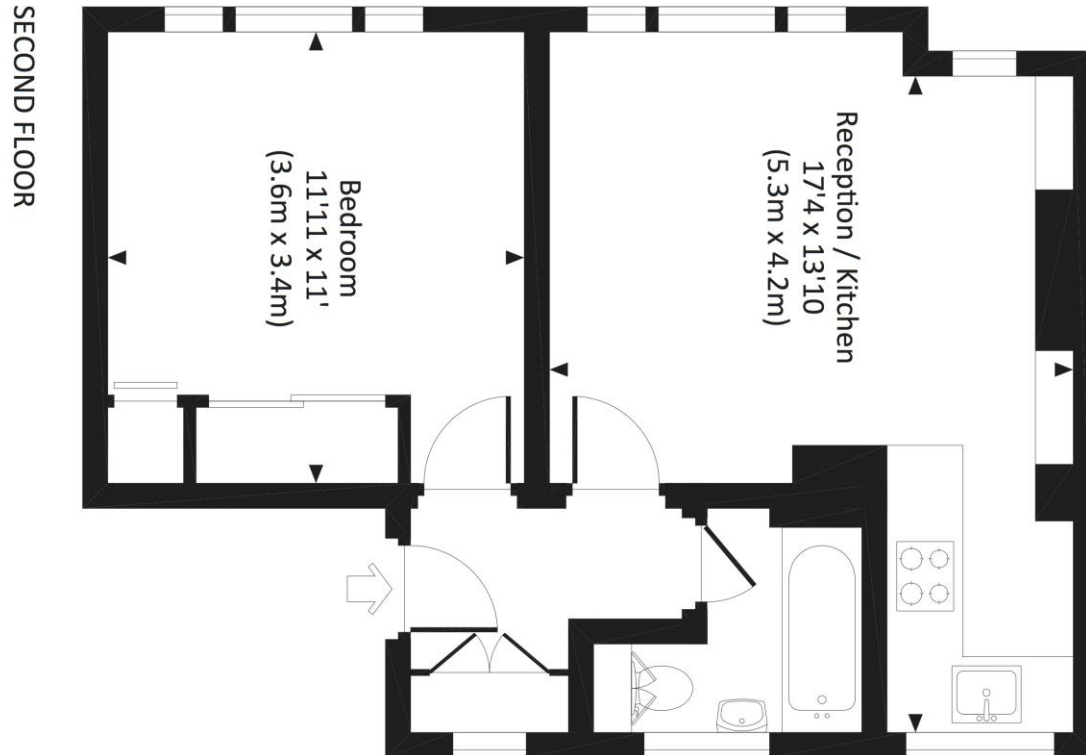
**Ground Rent:** Peppercorn

**EPC Rating:** C





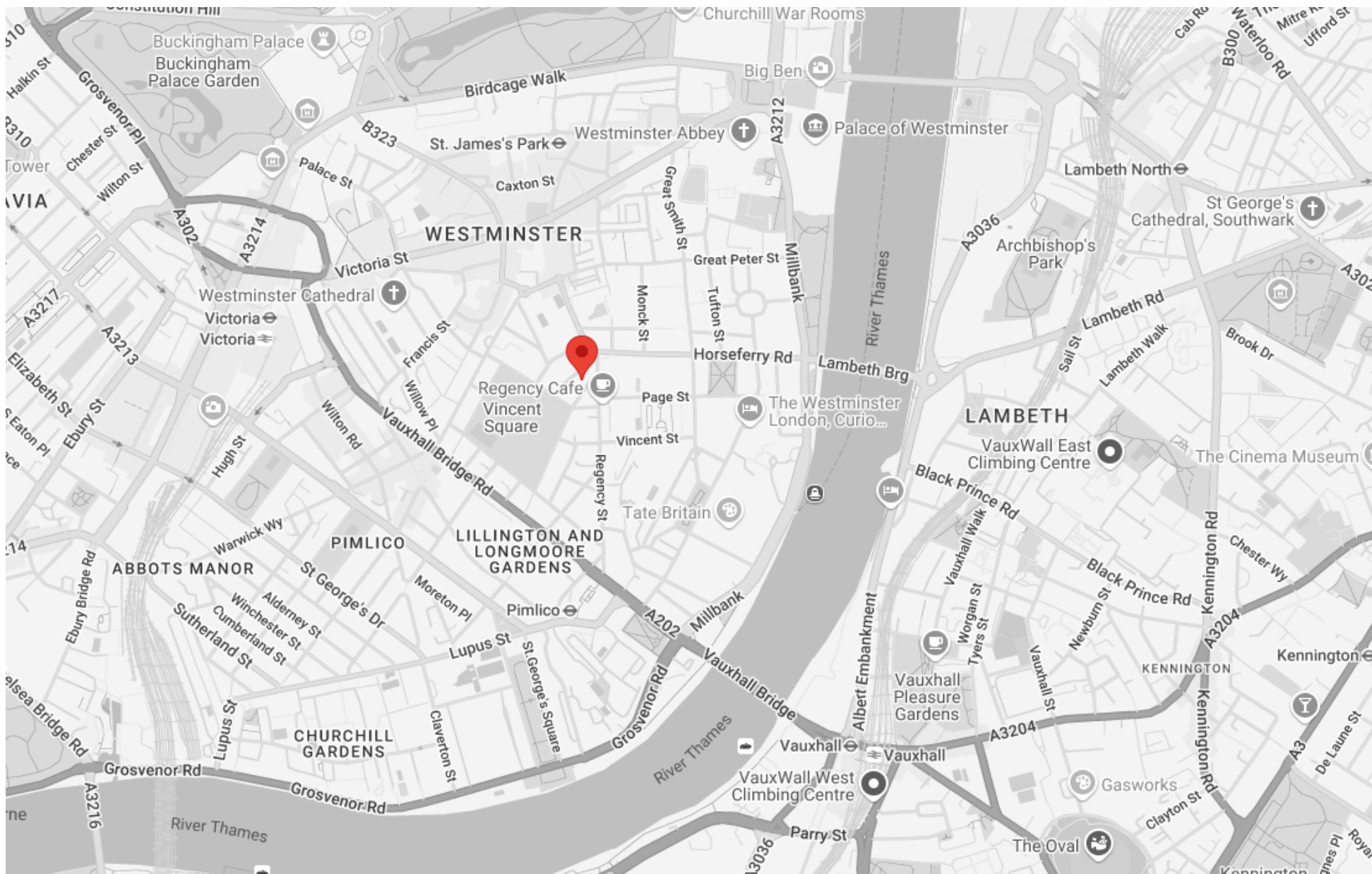
**RUTHERFORD STREET, SW1P**  
Approx. gross internal area  
414 Sq Ft. / 38.5 Sq M.



All measurements have been made in accordance with RICS Code of Measuring Practice which are approximate only and only for illustrative purposes. For the avoidance of doubt, Dowling Jones Design shall not be liable for any reliance on these measurements. © 2017 www.dowlingjones.com 020 7510 9933

Please note none of the statements contained in these particulars as to this property are to be relied on as statements or representation of fact. It should also be noted that amenities and appliances have not been tested.





# LCP

est.1990

+44 (0)207 723 1733  
LCP House, Ogle Street,  
London, W1W 6HU

[contact@lcpprivate.com](mailto:contact@lcpprivate.com)