



## Larch Road, NW2

£530 Per week

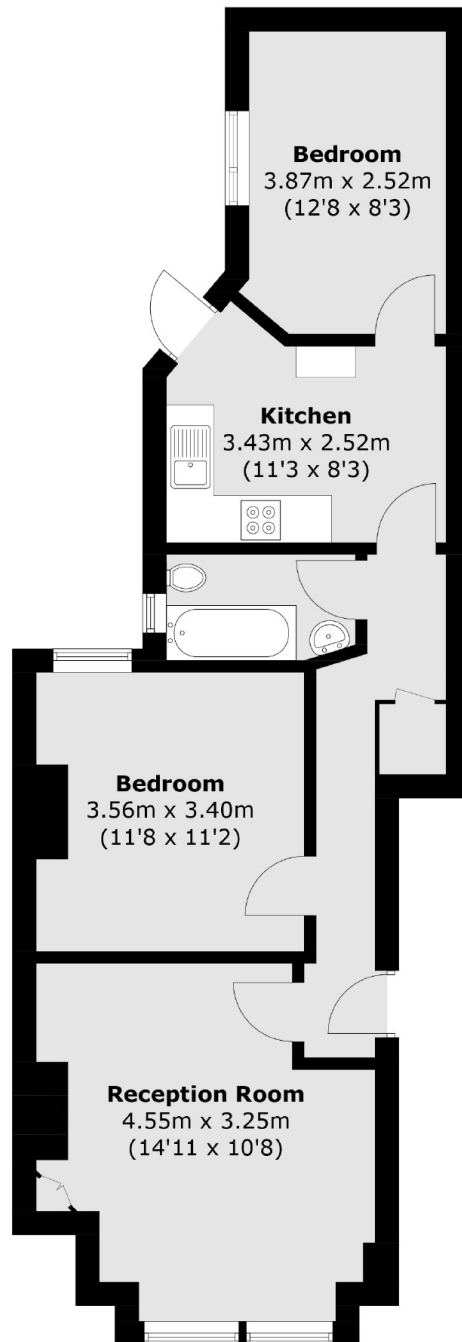
This well presented two bedroom ground floor period conversion is in the heart of Cricklewood with many local amenities near by. The property has a separate reception room with a bay window and feature fireplace, a modern kitchen with access to a large private garden.

Larch Road is a residential street located a short distance from multiple transport links including Cricklewood Station (Thameslink) and a number of bus routes. A variety of shops, eateries and facilities can be found at Brent Cross Shopping Centre which is just 1.9 miles away.

### Features

- Two Bedrooms
- Separate Reception
- One Bathroom
- Private Garden
- Modern Kitchen
- Period Features

# Larch Road, London, NW2



## Ground Floor

Total area (approx.): 60.2 sq. m (647.9 sq. ft)