



## Lynn Road, SW12

£2,800 Per calendar month

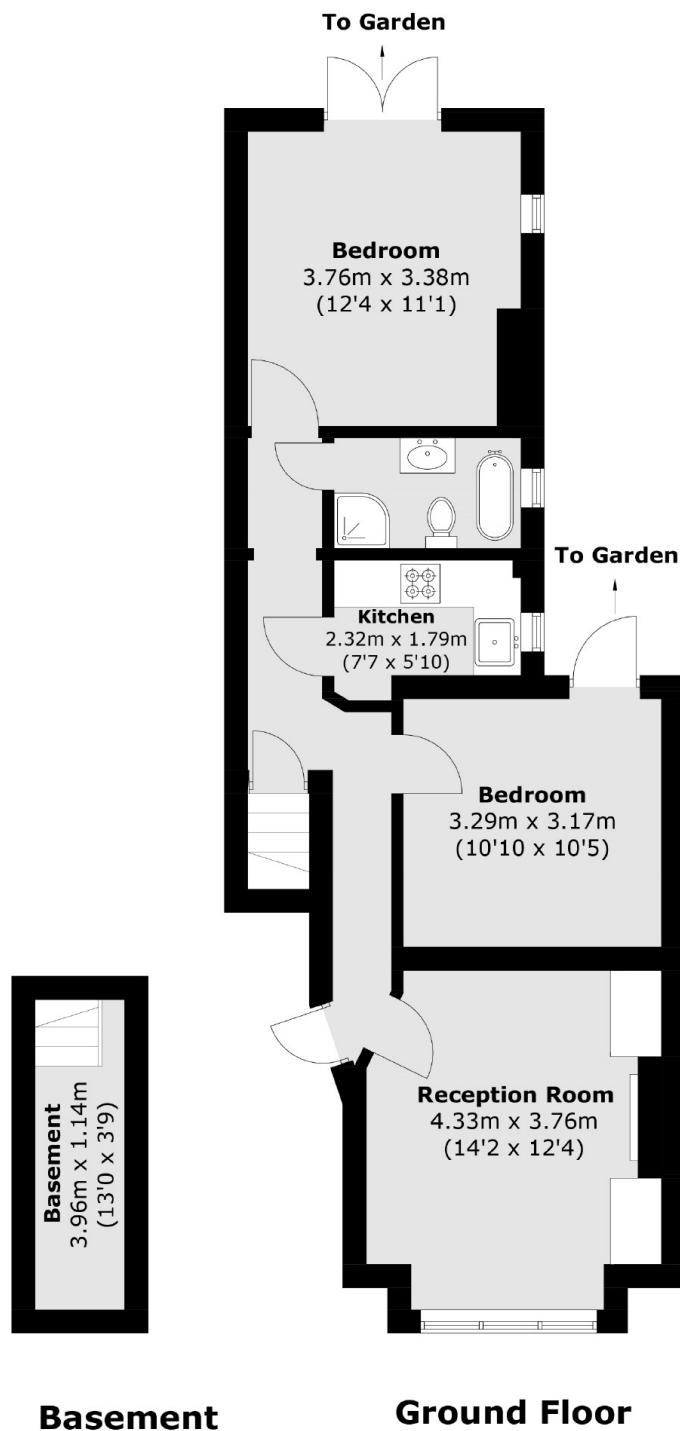
Set on the ground floor, this attractive two bedroom flat has been recently decorated throughout. Offering a large reception room with plantation shutters and space for dining, a separate modern kitchen and two double bedroom, both with access to a private garden.

Lynn Road is a residential road close to Clapham South tube station and Clapham Common itself. Along with cafés, quirky bars and restaurants nearby.

### Features

- Two Double Bedrooms
- Spacious Reception Room
- Separate Kitchen
- Stylish Bathroom
- Ground Floor Flat
- Private Garden

Lynn Road,  
London, SW12



Total area (approx.): 63.3 sq. m (681.3 sq. ft)

**Dexters**

Clapham South & Balham  
9 Cavendish Parade  
London  
SW4 9DP  
Lettings  
0208 675 6750

Energy Rating: D. We aim to make our particulars both accurate and reliable. However they are not guaranteed; nor do they form part of an offer or contract. If you require clarification on any points then please contact us, especially if you're traveling some distance to view. Please note that appliances and heating systems have not been tested and therefore no warranties can be given as to their good working order.

**RICS** | Regulated  
Estate Agent  
and Letting Agent

dexters.co.uk