



www.chrystals.co.im

Flat 4, 8 Raphael Road, Douglas, IM1 3EH
Asking Price £209,500

Flat 4, 8 Raphael Road, Douglas, IM1 3EH

Asking Price £209,500

Chrystals are delighted to offer this modern newly renovated immaculate 3 bedroom apartment in the heart of Douglas just minutes away from the city centre. This top floor bright and airy three bedroom apartment is finished to a high standard with a new fully fitted kitchen and bathrooms. With a spacious double bedroom, en-suite shower-room, two further bedrooms. Large contemporary family bath and shower room and modern kitchen. Viewing highly recommended.



LOCATION

From the Rosemont traffic lights travel south along Bucks Road and turn right onto Kensington Road. Take the next right onto Raphael Road and the property is located on the corner with Grosvenor Road.

COMMUNAL ENTRANCE

FLAT 4 - FIRST FLOOR ENTRY

ENTRANCE HALL

5' 11" x 11' 2" (1.8m x 3.4m)

BEDROOM

12' 2" x 17' 5" (3.7m x 5.3m)

ENSUITE

8' 10" x 3' 3" (2.7m x 1m)

STAIRS TO SECOND FLOOR

HALLWAY

9' 2" x 13' 1" (2.8m x 4m)

LIVING ROOM/DINING AREA

11' 10" x 12' 6" (3.6m x 3.8m)

KITCHEN

8' 2" x 12' 6" (2.5m x 3.8m)

BATHROOM

9' 6" x 9' 6" (2.9m x 2.9m)

BEDROOM

10' 2" x 8' 6" (3.1m x 2.6m)

BEDROOM

8' 10" x 7' 10" (2.7m x 2.4m)

OUTSIDE

Communal front garden.

TENURE

LEASEHOLD – 999 year lease.

Service Charge: Approx. £2090 per annum. Each apartment owner will have a 25% share in the Management Company, Raphael Road No. 8 Ltd.

SERVICES

Mains water, electricity and drainage. Electric heating.

VIEWING

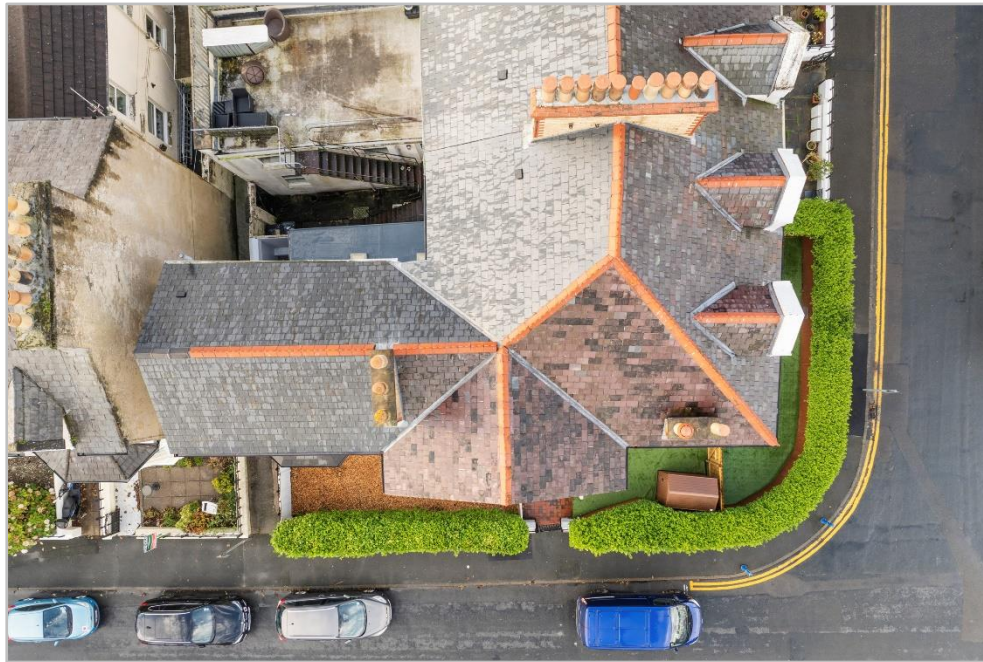
Viewing is strictly by appointment through CHRYSTALS. Please inform us if you are unable to keep appointments.

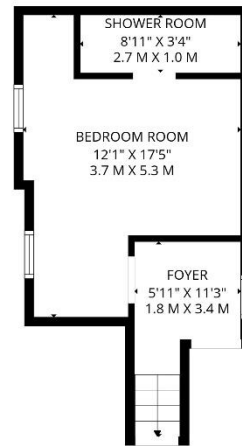
POSSESSION

Vacant possession on completion of purchase. The company do not hold themselves

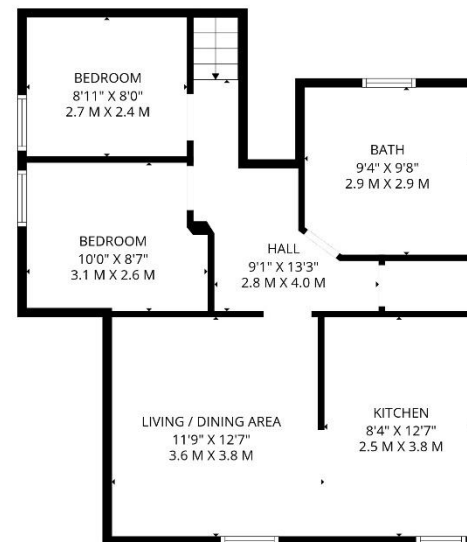
responsible for any expenses which may be incurred in visiting the same should it prove unsuitable or have been let, sold or withdrawn. DISCLAIMER - Notice is hereby given that these particulars, although believed to be correct do not form part of an offer or a contract. Neither the Vendor nor Chrystals, nor any person in their employment, makes or has the authority to make any representation or warranty in relation to the property. The Agents whilst endeavouring to ensure complete accuracy, cannot accept liability for any error or errors in the particulars stated, and a prospective purchaser should rely upon his or her own enquiries and inspection. All Statements contained in these particulars as to this property are made without responsibility on the part of Chrystals or the vendors or lessors







BASEMENT 1



1ST FLOOR

TOTAL: 836 sq. ft, 78 m2

BELOW GRADE: 227 sq. ft, 21 m2, 1st floor: 609 sq. ft, 57 m2

EXCLUDED AREAS: WALLS: 97 sq. ft, 9 m2



Since 1854



DOUGLAS

31 Victoria Street
Douglas IM1 2SE
T. 01624 623778
E. douglas@chrystals.co.im

PORT ERIN

23 Station Road
Port Erin IM9 6RA
T. 01624 833903
E. porterin@chrystals.co.im

COMMERCIAL

Douglas Office: 01624 625100, commercial@chrystals.co.im

RENTALS

Douglas Office: 01624 625300, douglasrentals@chrystals.co.im

Directors: Neil Taggart BSc (Hons), M.R.I.C.S.; Joney Kerruish BSc (Hons), M.R.I.C.S.; Dafydd Lewis BSc (Hons), M.R.I.C.S., MA (Cantab), Dip Surv Prac.
Registered in the Isle of Man No. 34808, Chrystal Bros, Stott & Kerruish Ltd. Trading as Chrystals. Registered Office, 31 Victoria Street, Douglas, Isle of Man IM1 2SE.