



INTERLET

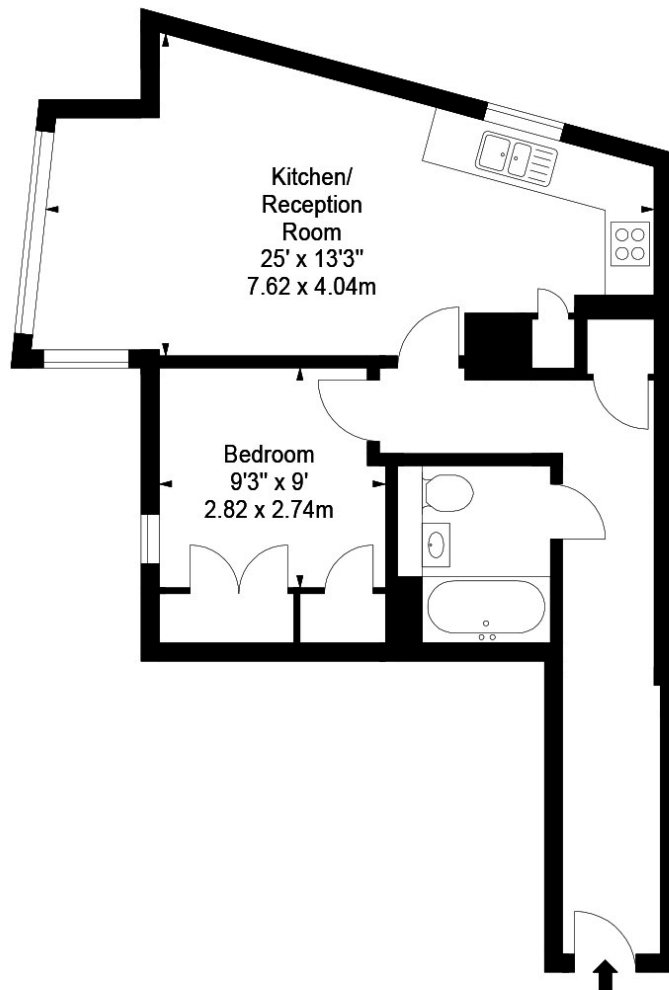
MERCHANT SQUARE, PADDINGTON, LONDON W2  
£630 PW





A stunning one double bedroom, one bathroom, interior designed apartment on the fifth floor of this modern building in Paddington and within walking distance to the ever popular West End Quay. The apartment includes one double bedroom, one bathroom and spacious reception room with fully fitted open plan kitchen and modern bathroom. Flat is available furnished or unfurnished. Property benefits from lift service, 24 hour concierge and secure underground parking Merchant Square forms part of the Paddington Basin regeneration and is located within close proximity of Hyde Park. For transport Edgware Road (District, Circle, Hammersmith and City and Bakerloo Lines) and Paddington Station (Bakerloo, Circle, District, Hammersmith and City lines) with its National and international connections prove to be essential to remaining mobile in London.[...]

l e t t i n g s @ i n t e r l e t . c o m  
+ 4 4 ( 0 ) 2 0 7 7 9 5 6 5 2 5  
w w w . i n t e r l e t . c o m



## Important Notice

Interlet and their clients give notice that: 1) They are not authorised to make or give any representations or warranties in relation to the property, either here or else where. The particulars do not form part of any offer part of any offer or contract and must not be relied upon as statements or representations of fact. 2. Any areas, measurements, distances are approximate. The text, images and plans are for guidance only and are not necessarily comprehensive. It should not be assumed that the property has all necessary planning, building regulation or other contents and Interlet have not tested any services, equipment or facilities. Prospective tenants must satisfy themselves by inspection or otherwise. Please note that the local area may be affected by aircraft noise, you should make your own enquiries regarding any noise in the area before you make an offer.

# interlet

SALES & LETTINGS

Welcome home.