



Fernihough Close, KT13 0UY





Tucked away in a quiet residential close, this attractive extended home offers well-proportioned accommodation arranged in a practical layout ideal for modern family living. Bright interiors and a welcoming atmosphere run throughout.

The ground floor features a spacious bay-fronted sitting room, which opens via double doors into an impressive kitchen/dining room. The kitchen is fitted with ample storage and provides generous space for a dining table, while triple bi-fold doors open seamlessly onto the rear garden, creating an excellent space for entertaining. A further reception room, also with double doors to the garden, is ideal as a family room but could equally serve as a spacious fourth bedroom, benefitting from access to a ground-floor shower room. A useful utility room completes the ground-floor accommodation.

Upstairs, there are three well-proportioned bedrooms, all with built-in wardrobes, along with a modern family bathroom featuring fully tiled walls, a white suite and a heated towel rail.

Outside, a large patio spans the width of the rear garden and leads to a two-tiered decked area, providing excellent outdoor entertaining space. To the front, the property benefits from a lawned garden and driveway parking.

The Brooklands local stores are within easy reach, along with nearby green spaces and riverside walks in Brooklands Community Park. Weybridge town centre and mainline station are also easily accessible, offering direct services into London.

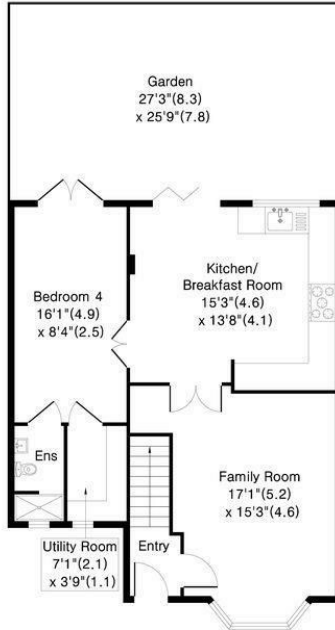


Freehold

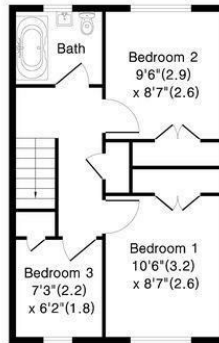
Fernihough Close, Weybridge, KT13



Approximate Gross Internal Area = 95 sq m / 1024 sq ft
For Identification Only - Not to scale



Ground Floor



First Floor

Floor plan Produced in accordance with RICS Property Measurement 2nd Edition,
Incorporating International Property Measurement Standards (IPMS2 Residential).



EPC Rating: 73 C

g
GRANTS
HOMES



Grants Homes 60 Church Street, Weybridge, Surrey, KT13 8DL
T: 01932 841020 E: weybridge@grantshomes.co.uk

