



Pinewood Grove, W5

£450,000

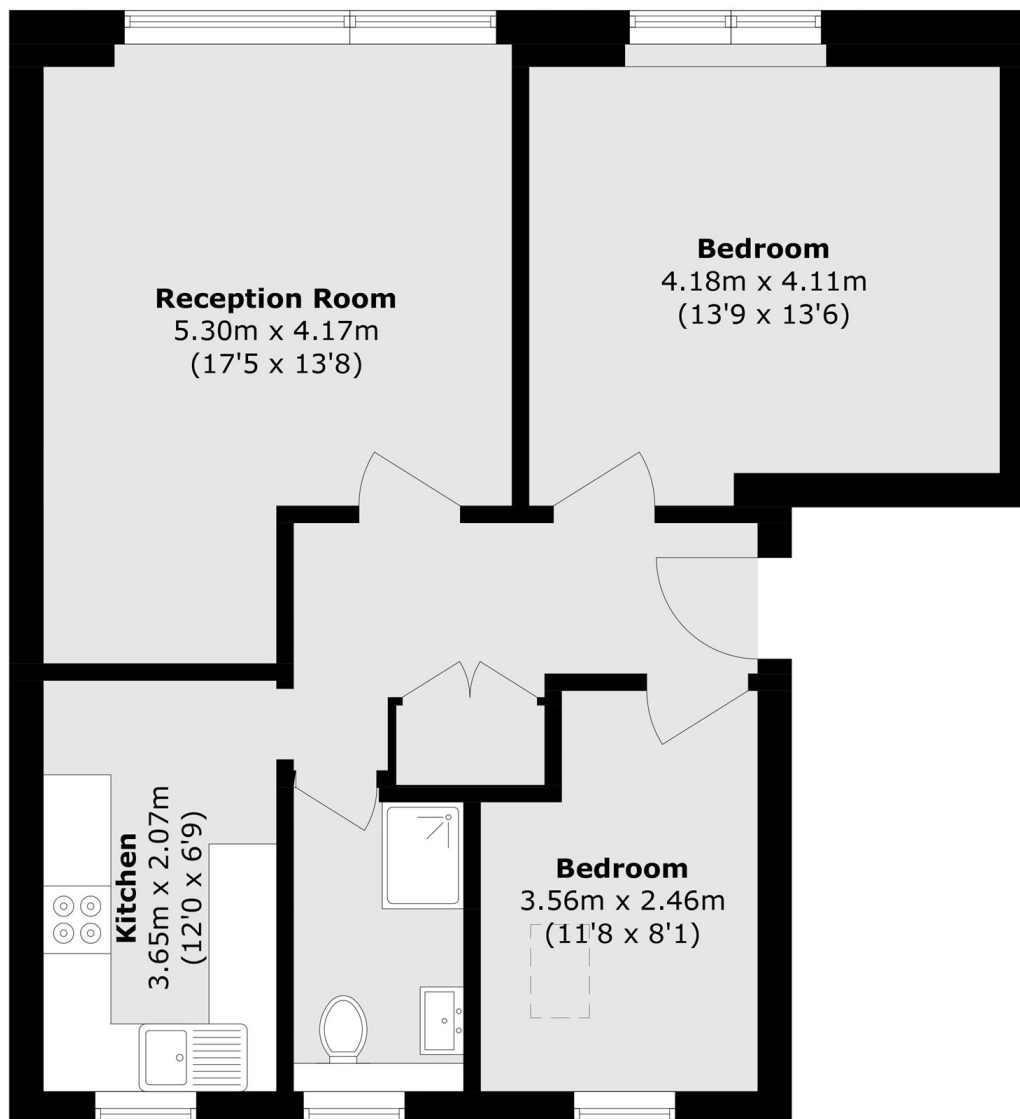
A two double bedroom first floor purpose built apartment with share of freehold and a garage. With floor to ceiling double glazed windows offering excellent natural light and open views over the playing fields. The property has no onward chain and is excellently presented, a perfect opportunity for a first time buyer or investment.

Pinewood Grove is a quiet, private development, less than half a mile from Ealing Broadway station, with the wide range of shops and amenities that Ealing has to offer just around the corner. It's a short walk to the open space of Haven Green and excellent local schools.

Features

- Two Bedrooms
- First Floor
- Garage
- Parking permit
- No Onward Chain
- Share Of Freehold
- Close To Transport

Pinewood Grove, London, W5



Total area (approx.): 66.5 sq. m (715.8 sq. ft)